

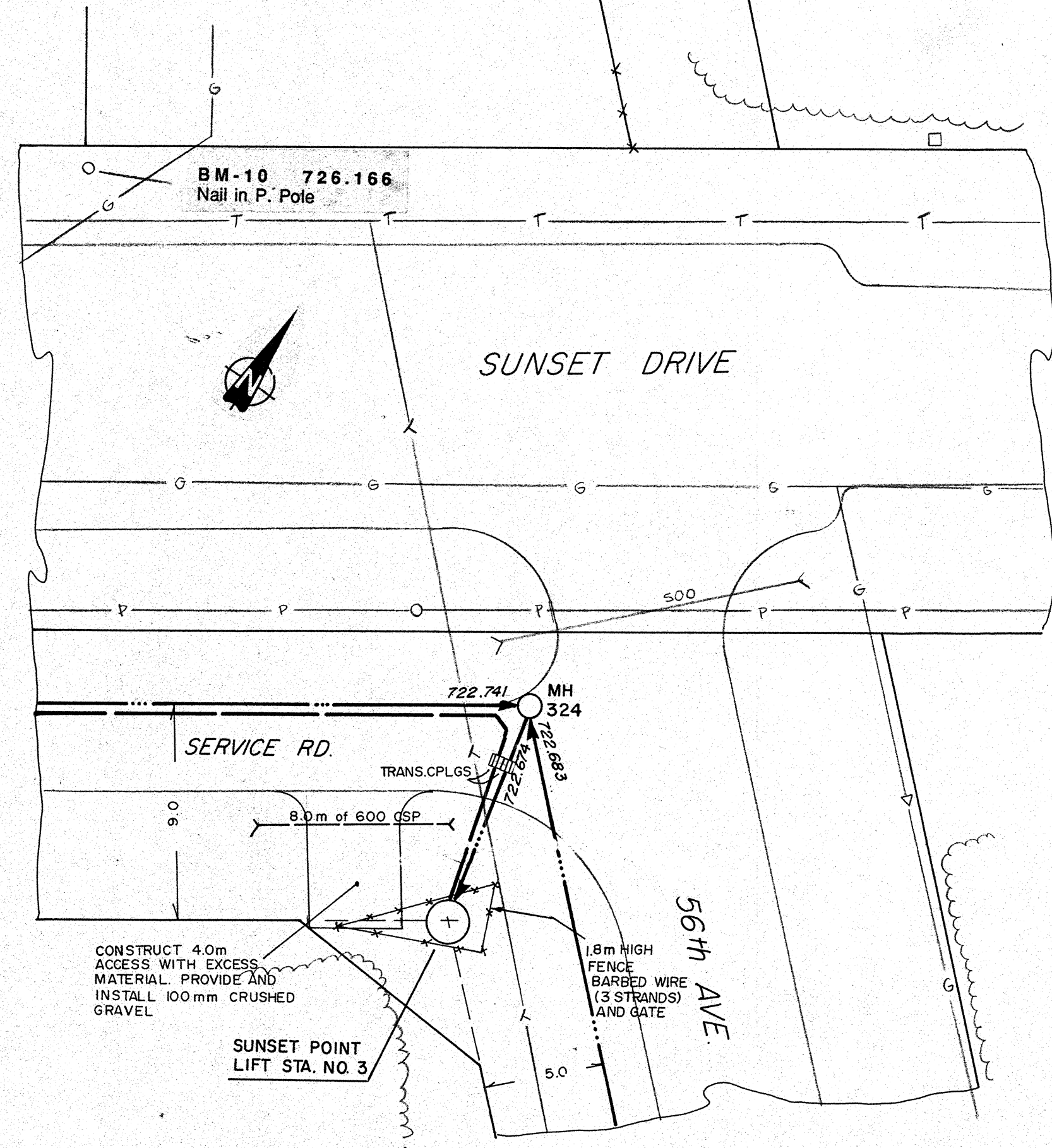
**SEWAGE LIFT STATION - PLAN VIEW**  
N.T.S.

**EQUIPMENT SCHEDULE - SUNSET POINT LIFT STATION NO. 3**

- 1 1800 DIA. CONTINUOUSLY WELDED STEEL TANK 6 MM WALL THICKNESS, SAND BLASTED, COATED FOR CORROSION PROTECTION
- 2 WORK PLATFORM WITH REMOVABLE SECTIONS FOR PUMP ACCESS
- 3 ALUMINUM HATCH COVERS WITH HINGES, LOCK DEVICES
- 4 M15 ANCHOR BOLTS 450 X 19
- 5 C150 X 22 I-BEAM - 2438 LONG (2 REQUIRED)
- 6 C150 X 22 I-BEAM - 880 LONG (3 REQUIRED)
- 7 RE-BAR MAT 15M AT 300 EACH WAY
- 8 38 X 38 X 6 CHAIN FOR PUMP REMOVAL
- 9 8 KG MAGNESIUM ANODES (2 REQUIRED)
- 10 230V SINGLE PHASE, FLYGT MODEL 3201 (IMP 433) 3.9 HP, 230 VOLT, SINGLE PHASE, SUBMERSIBLE, SEWAGE PUMPS EACH CAPABLE OF 115 USGPM AT 30'
- 11 100 MM SCHEDULE 40 STEEL PIPE AND FITTINGS
- 12 SLIDE RAIL SYSTEM
- 13 100 MM DISCHARGE BASE ASSEMBLY
- 14 PROVIDE GRAB BARS ON UNDERSIDE OF HATCH LID
- 15 PRESSURE GAUGE C/W ISOLATION VALVE
- 17 MERCURY FLOAT SWITCHES
- 18 100 MM GATE VALVE C/W EXTENSION STEM TO TOP OF TANK
- 19 100 MM CHECK VALVE
- 20 COMBINATION VENTILATION FAN AND HEATER C/W DUCTING TO HIGH WATER LEVEL
- 21 AIR RELEASE VALVE
- 22 WALL MOUNTED EXPLOSION PROOF 150 WATT LIGHT FIXTURE
- 23 CONTROL PANEL, TANK MOUNTED
- 24 ROTATING LIFTING DAVIT
- 25 ALARM BEACON MOUNTED ON TOP OF CONTROL PANEL
- 26 VALVE OPERATOR EXTENSION TO TOP OF TANK. PROVIDE OPERATION WHEELS AT TOP AND NEAR VALVE.
- 27 EXHAUST VENT

**SEWAGE LIFT STATION - SECTION**  
N.T.S.

REFER TO DRAWING D.3 FOR CONCRETE WET WELL ALTERNATE



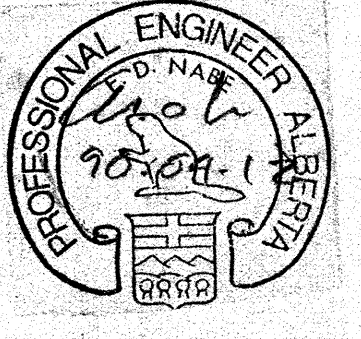
**SITE PLAN**

**SIEMENS**  
SIEMENS ENGINEERING SERVICES LTD.  
**AS-BUILT**  
DATE: 9/1/04/08  
REVIEWED BY: [Signature]

**LEGEND**

|        |   |
|--------|---|
| Symbol | GRAVITY SEWER, MANHOLE, INVERT, AND DIRECTION OF FLOW                     |
| Symbol | FORCEMAIN   |
| Symbol | AGT PEDESTAL  |
| Symbol | CSP CULVERT WIDTH   |
| Symbol | FOUND LEGAL MARKER  |
| Symbol | POWER POLE W/ GUY   |
| Symbol | FENCE (WF-WIRE, CLF-CHAIN LINK, BF-BOARD, RF-RAIL, GR-GUARDRAIL, SF-SNOW) |
| Symbol | GAS REGULATOR STATION   |
| Symbol | POWER LINE  |
| Symbol | GAS LINE  |
| Symbol | TELEPHONE LINE  |

**PERMIT TO PRACTICE**  
SIEMENS ENGINEERING SERVICES LTD.  
Signature: [Signature]  
Date: 10-04-12  
**PERMIT NUMBER: P 2998**  
The Association of Professional Engineers, Geologists and Geophysicists of Alberta



| No.       | DATE  | DESCRIPTION | BY | APP |
|-----------|-------|-------------|----|-----|
| 1         | 11/90 | AS BUILT    | DF | PM  |
| REVISIONS |       |             |    |     |

|             |             |             |            |
|-------------|-------------|-------------|------------|
| SCALE       | AS SHOWN    | PROJECT No. | 60-89-1    |
| DESIGNED BY | EDN         | DRAWN BY    | DF         |
| CHECKED BY  | [Signature] | DATE        | MAR., 1990 |

**SIEMENS**  
SIEMENS ENGINEERING SERVICES LTD.  
CIVIL & MUNICIPAL ENGINEERS  
DEVELOPMENT CONSULTANTS • PLANNERS

|  |    |                 |
|--|----|-----------------|
| TRI-VILLAGE REGIONAL SEWAGE COMMISSION                     |    |                 |
| SUMMER VILLAGE OF SUNSET POINT<br>SEWAGE COLLECTION SYSTEM |    |                 |
| LIFT STATION NO. 3<br>DETAILS                              |    |                 |
| SHEET  | OF | DWG. No. LS 3.3 |