

SIEMENS
 CIVIL & MUNICIPAL ENGINEERS
 DEVELOPMENT CONSULTANTS • PLANNERS
 SIEMENS ENGINEERING SERVICES LTD.

PROJECT No. 80-89-1	SCALE AS SHOWN
DRAWN BY DFF	DESIGNED BY EDM
DATE MAR., 1990	CHECKED BY

REVISIONS	No.	DATE	DESCRIPTION	BY	APP.
	1	1990 02 23	ELEVATIONS	DF	EN
	2	11.90	AS BUILT	DF	PM

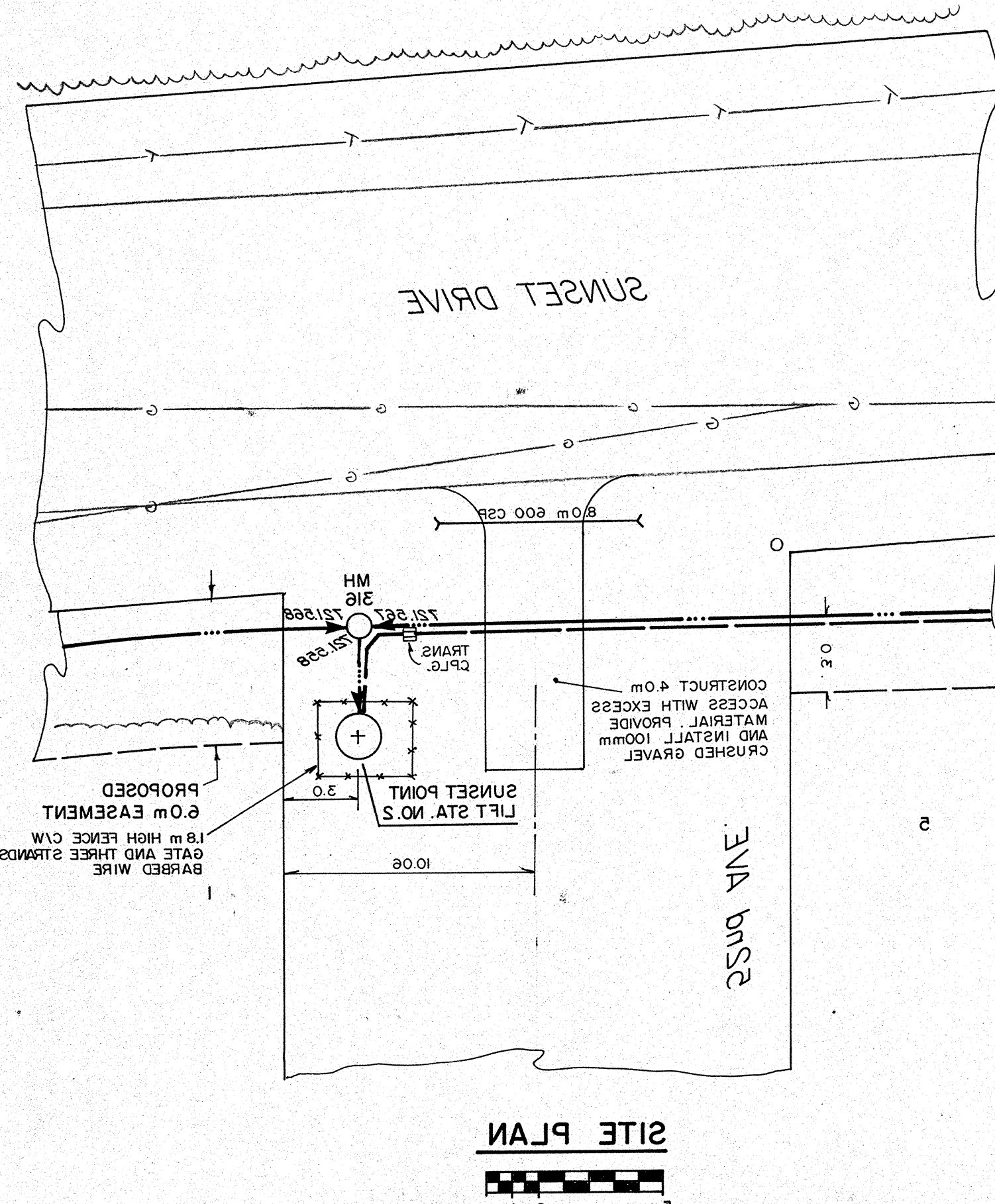
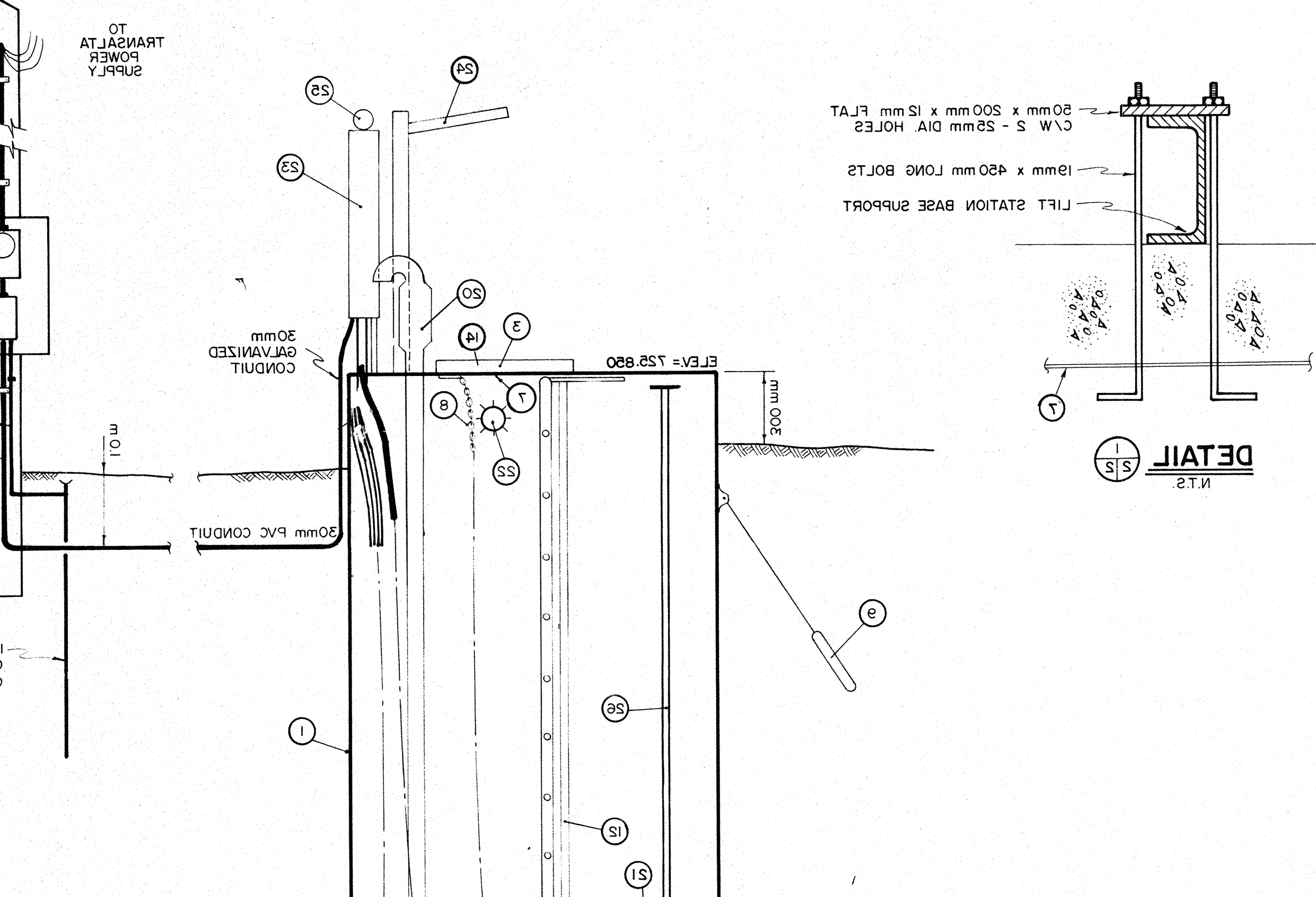
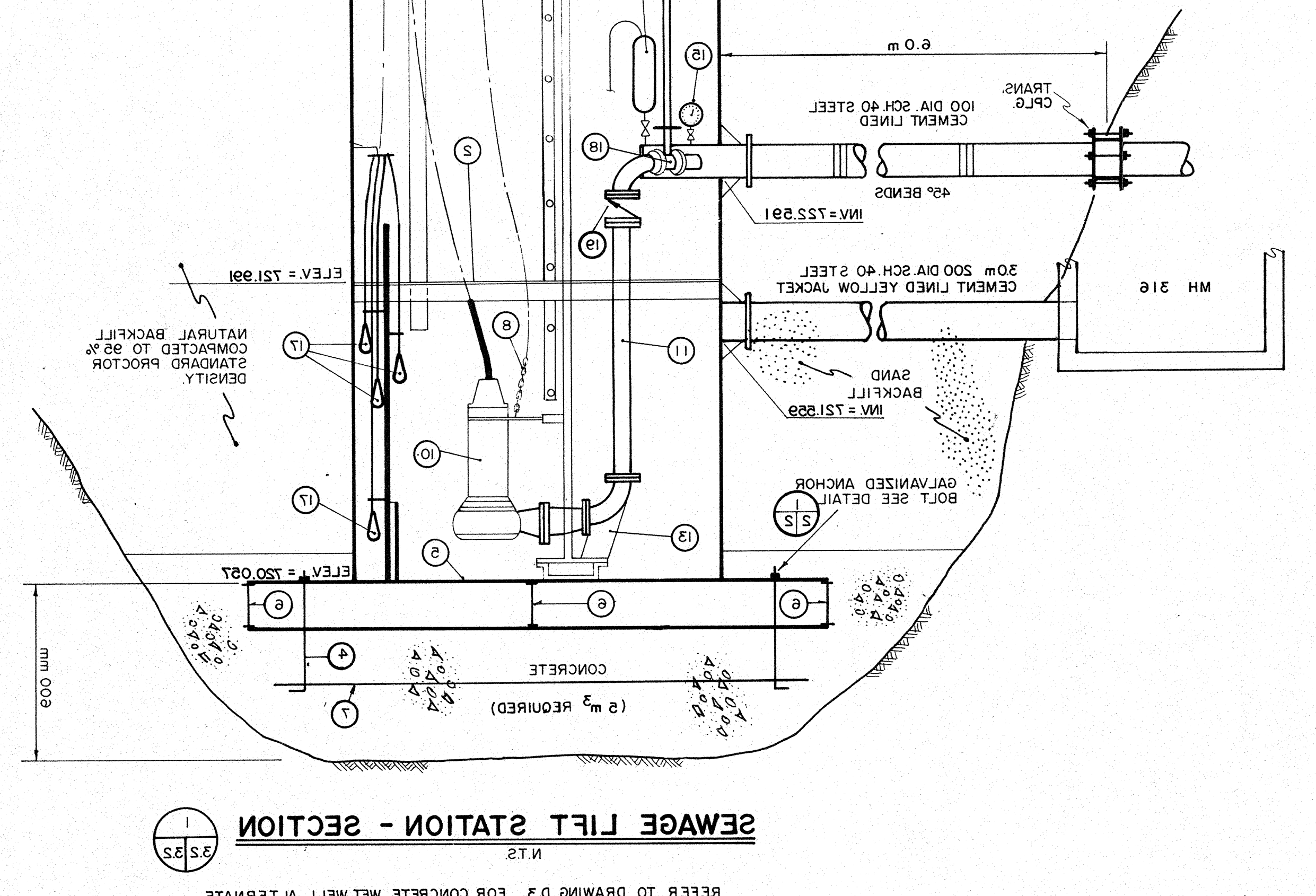
PERMIT TO PRACTICE
 SIEMENS ENGINEERING SERVICES LTD.
 Signature: _____
 Date: 10.04.90
PERMIT NUMBER: P 2998
 The Association of Professional Engineers
 Geologists and Geophysicists of Alberta

REFER TO DRAWING D.3 FOR CONCRETE WET WELL ALTERNATE

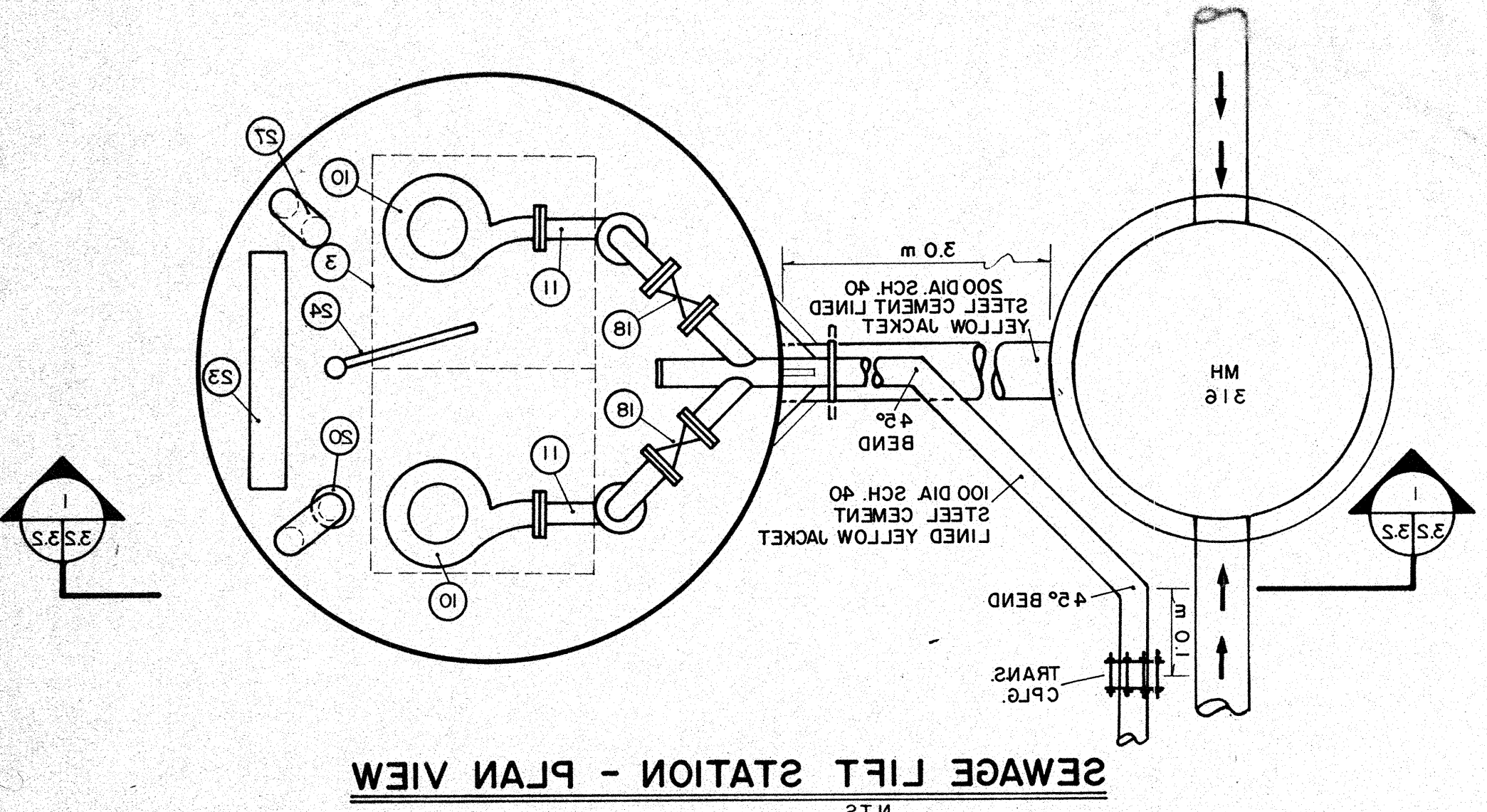
SEWAGE LIFT STATION - SECTION
 N.T.S.

LEGEND

- 1 TELEPHONE LINE
- 2 GAS LINE
- 3 POWER LINE
- 4 GAS REGULATOR
- 5 FENCE (W/ WIRE) OR CHAIN LINK, BR. BOARD, RR. RAIL
- 6 GR. GUARDRAIL (BR. SHOWN)
- 7 FLOW DIRECTION
- 8 MANHOLE INVERT
- 9 GRAVITY SEWER



- EQUIPMENT SCHEDULE - SUNSET POINT LIFT STATION NO. 2**
- 1800 DIA. CONTINUOUSLY WELDED STEEL TANK 6 MM WALL THICKNESS, SAND BLASTED FOR CORROSION PROTECTION
 - WORK PLATFORM WITH REMOVABLE SECTIONS FOR PUMP ACCESS
 - ALUMINUM HATCH COVERS WITH HINGES, LOCK DEVICES
 - M15 ANCHOR BOLTS 450 X 18
 - C150 X 25 I-BEAM - 2438 LONG (2 REQUIRED)
 - C150 X 25 I-BEAM - 880 LONG (3 REQUIRED)
 - RE-BAR MAT 15M AT 300 EACH WAY
 - 38 X 38 X 6 CHAIN FOR PUMP REMOVAL
 - 8 KG MAGNESIUM ANODES (2 REQUIRED)
 - 230V SINGLE PHASE, FLYGT MODEL 3201 (IMP. 433) 3.9 HP, 230 VOLT, SINGLE PHASE, SUBMERSIBLE, SEWAGE PUMPS EACH CAPABLE OF 115 USGPM AT 30'
 - 100 MM SCHEDULE 40 STEEL PIPE AND FITTINGS
 - SLIDE RAIL SYSTEM
 - 100 MM DISCHARGE BASE ASSEMBLY
 - PROVIDE GRAB BARS ON UNDERSIDE OF HATCH LID
 - PRESSURE GAUGE C/W ISOLATION VALVE
 - MERCURY FLOAT SWITCHES
 - 100 MM GATE VALVE C/W EXTENSION STEM TO TOP OF TANK
 - 100 MM CHECK VALVE
 - COMBINATION VENTILATION FAN AND HEATER C/W DUCTING TO HIGH WATER LEVEL
 - AIR RELEASE VALVE
 - WALL MOUNTED EXPLOSION PROOF 150 WATT LIGHT FIXTURE
 - CONTROL PANEL, TANK MOUNTED
 - ROTATING LIGHTING DAVIT
 - ALARM BEACON MOUNTED ON TOP OF CONTROL PANEL
 - VALVE OPERATOR EXTENSION TO TOP OF TANK, PROVIDE OPERATION WHEELS AT TOP AND NEAR VALVE
 - EXHAUST VENT



SIEMENS
 SIEMENS ENGINEERING SERVICES LTD.
 AS-BUILT
 DATE: 11/04/90
 REVIEWED BY: _____