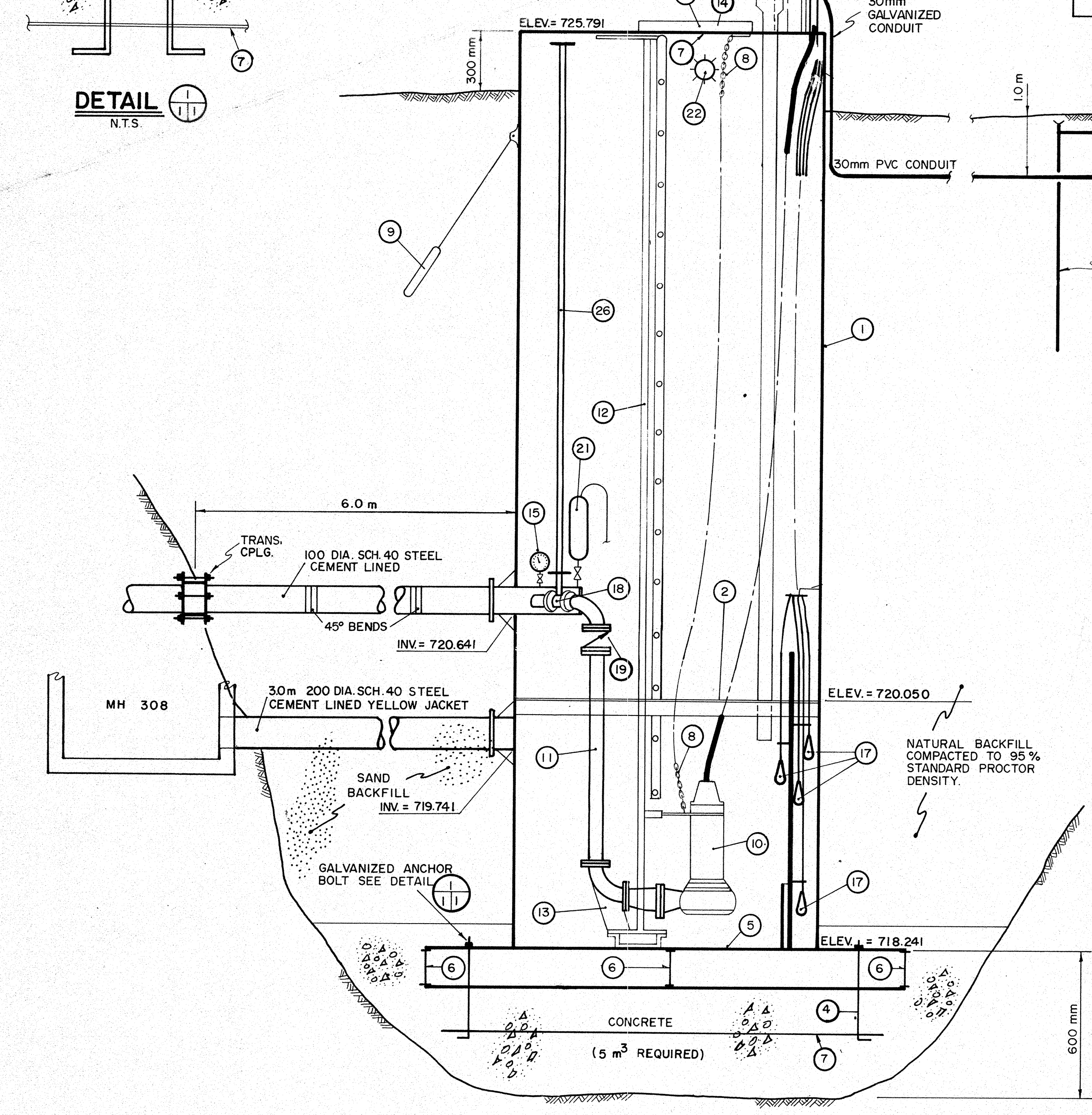
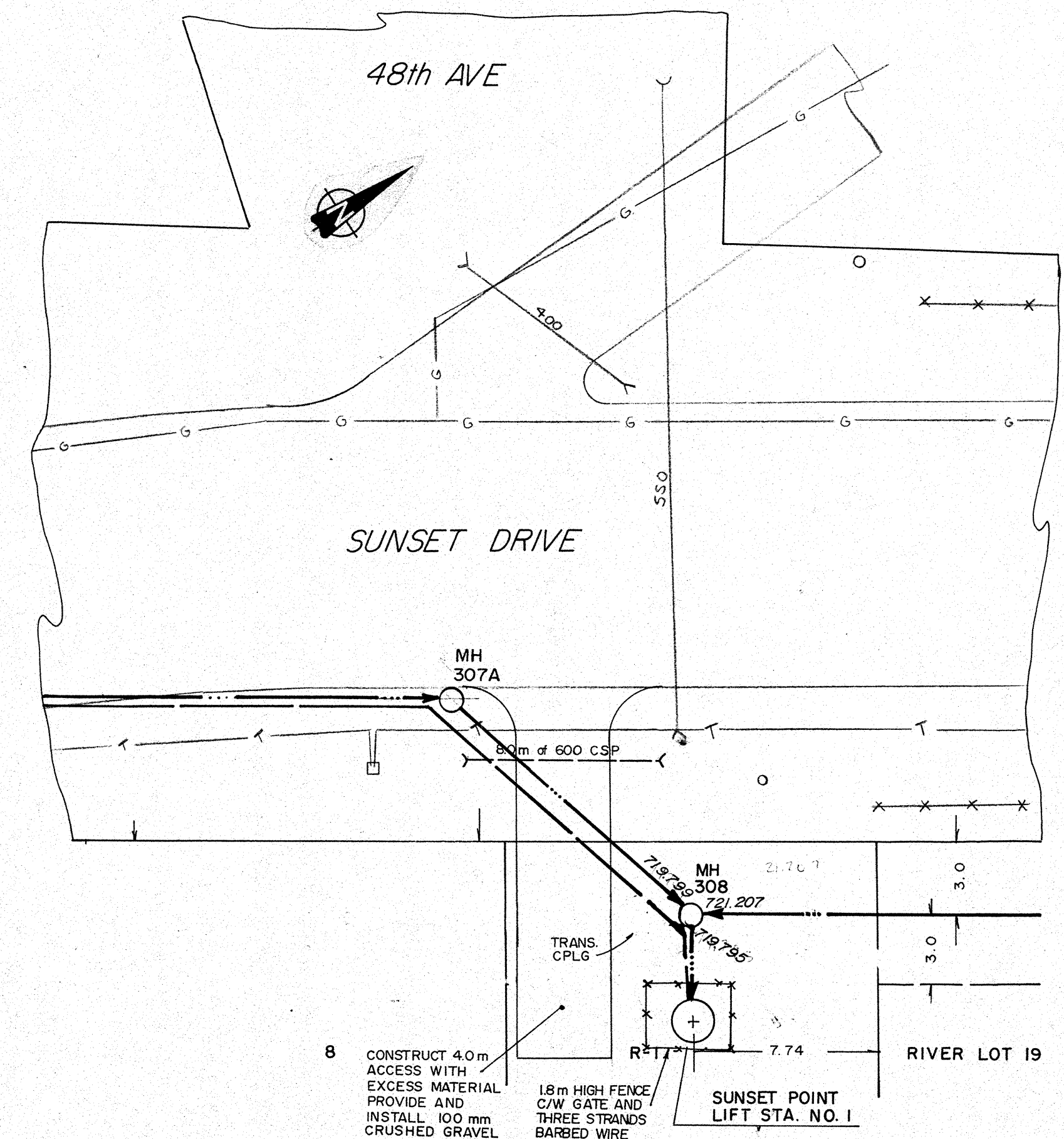


SEWAGE LIFT STATION - PLAN VIEW
N.T.S.



SEWAGE LIFT STATION - SECTION
N.T.S.

REFER TO DRAWING D,3 FOR CONCRETE WET WELL ALTERNATE



SITE PLAN
5m 0 1 2m

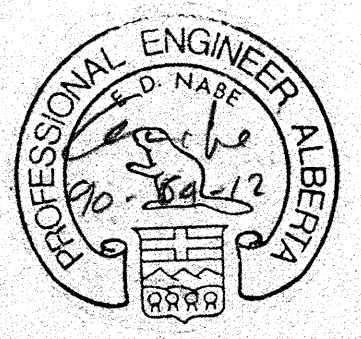
- EQUIPMENT SCHEDULE - SUNSET POINT LIFT STATION NO. 1**
- 1800 DIA. CONTINUOUSLY WELDED STEEL TANK 6 MM WALL THICKNESS, SAND BLASTED, COATED FOR CORROSION PROTECTION
 - WORK PLATFORM WITH REMOVABLE SECTIONS FOR PUMP ACCESS
 - ALUMINUM HATCH COVERS WITH HINGES, LOCK DEVICES
 - M15 ANCHOR BOLTS 450 X 19
 - C150 X 22 I-BEAM - 2438 LONG (2 REQUIRED)
 - C150 X 22 I-BEAM - 880 LONG (3 REQUIRED)
 - RE-BAR MAT 15M AT 300 EACH WAY
 - 38 X 38 X 6 CHAIN FOR PUMP REMOVAL
 - 8 KG MAGNESIUM ANODES (2 REQUIRED)
 - 230V SINGLE PHASE, FLYGT MODEL 3201 (IMP 433) 3.9 HP, 230 VOLT, SINGLE PHASE, SUBMERSIBLE, SEWAGE PUMPS EACH CAPABLE OF 115 USGPM AT 30'
 - 100 MM SCHEDULE 40 STEEL PIPE AND FITTINGS
 - SLIDE RAIL SYSTEM
 - 100 MM DISCHARGE BASE ASSEMBLY
 - PROVIDE GRAB BARS ON UNDERSIDE OF HATCH LID
 - PRESSURE GAUGE C/W ISOLATION VALVE
 - MERCURY FLOAT SWITCHES
 - 100 MM GATE VALVE C/W EXTENSION STEM TO TOP OF TANK
 - 100 MM CHECK VALVE
 - COMBINATION VENTILATION FAN AND HEATER C/W DUCTING TO HIGH WATER LEVEL
 - AIR RELEASE VALVE
 - WALL MOUNTED EXPLOSION PROOF 150 WATT LIGHT FIXTURE
 - CONTROL PANEL, TANK MOUNTED
 - ROTATING LIFTING DAVIT
 - ALARM BEACON MOUNTED ON TOP OF CONTROL PANEL
 - VALVE OPERATOR EXTENSION TO TOP OF TANK. PROVIDE OPERATION WHEELS AT TOP AND NEAR VALVE.
 - EXHAUST VENT

SIEMENS
SIEMENS ENGINEERING SERVICES LTD.
AS-BUILT
DATE: 9/1/99
REVIEWED BY: [Signature]

LEGEND

72.50 MH	GRAVITY SEWER, MAN-HOLE, INVERT, AND DIRECTION OF FLOW
—	FORERUN
□	AGT/RECEIVAL
—	CSP CULVERT WIDTH
◆	FOUND LEGAL MARKER
—	POWER POLE W/ GUY
—	FENCE (W/F WIRE, CLF CHAIN LINK, BF BOARD, RF RAIL, GR GUARDRAIL, SF SNOW)
△	GAS REGULATOR STATION
—	POWER LINE
—	GAS LINE
—	TELEPHONE LINE

PERMIT TO PRACTICE
SIEMENS ENGINEERING SERVICES LTD.
Signature: [Signature]
Date: 90-04-12
PERMIT NUMBER: P 2998
The Association of Professional Engineers, Geologists and Geophysicists of Alberta



No.	DATE	DESCRIPTION	BY	APP
1	11/90	AS BUILT	DF	EN
REVISIONS				

SCALE	AS SHOWN	PROJECT No.	60-89-1
DESIGNED BY	EDN	DRAWN BY	DF
CHECKED BY	[Signature]	DATE	MAR., 1990

SIEMENS
SIEMENS ENGINEERING SERVICES LTD.
CIVIL & MUNICIPAL ENGINEERS
DEVELOPMENT CONSULTANTS • PLANNERS

TRI-VILLAGE REGIONAL SEWAGE COMMISSION
SUMMER VILLAGE OF SUNSET POINT
SEWAGE COLLECTION SYSTEM
LIFT STATION NO. 1
DETAILS
SHEET OF DWG. No. LS 3.1