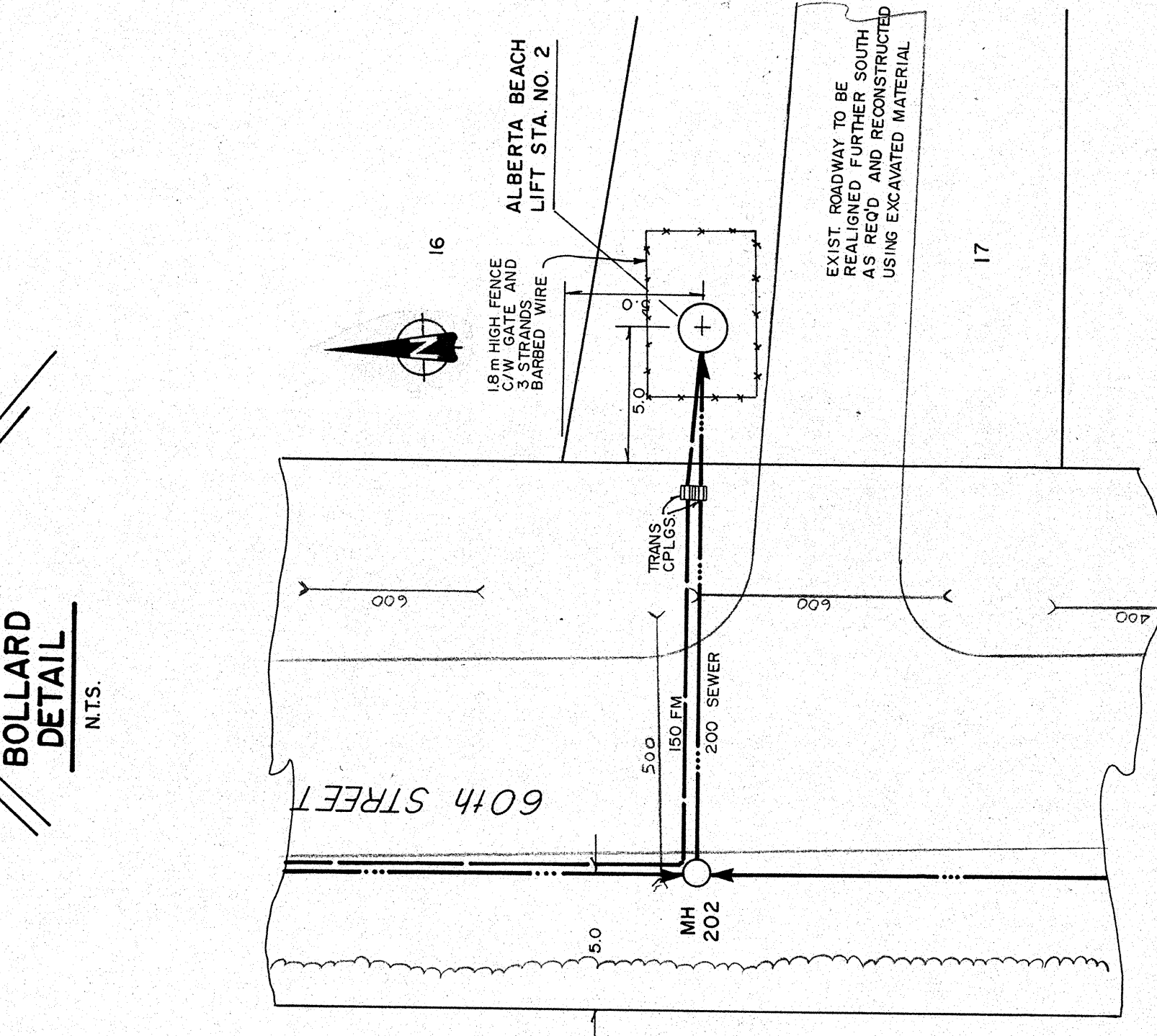
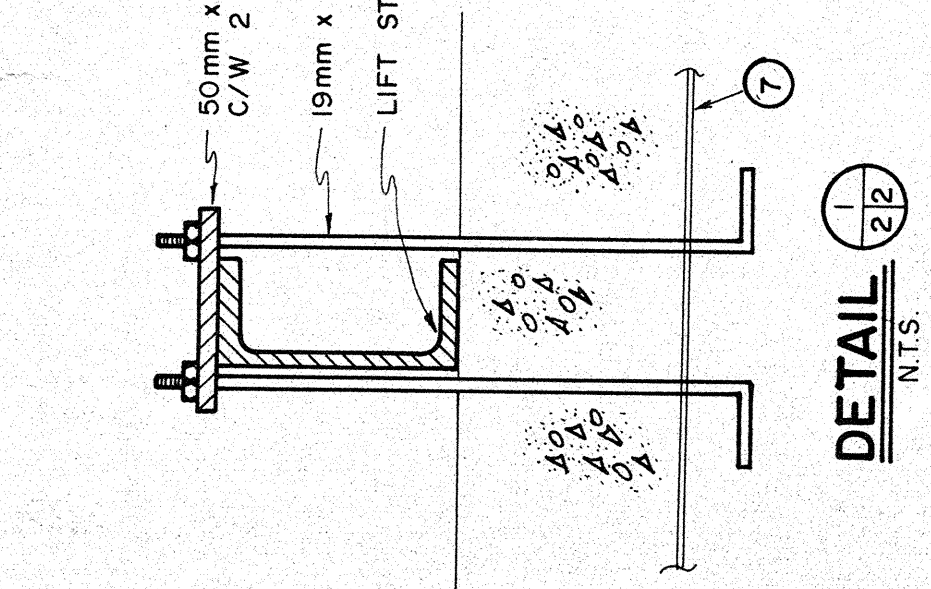


BOLLARD DETAIL
N.T.S.



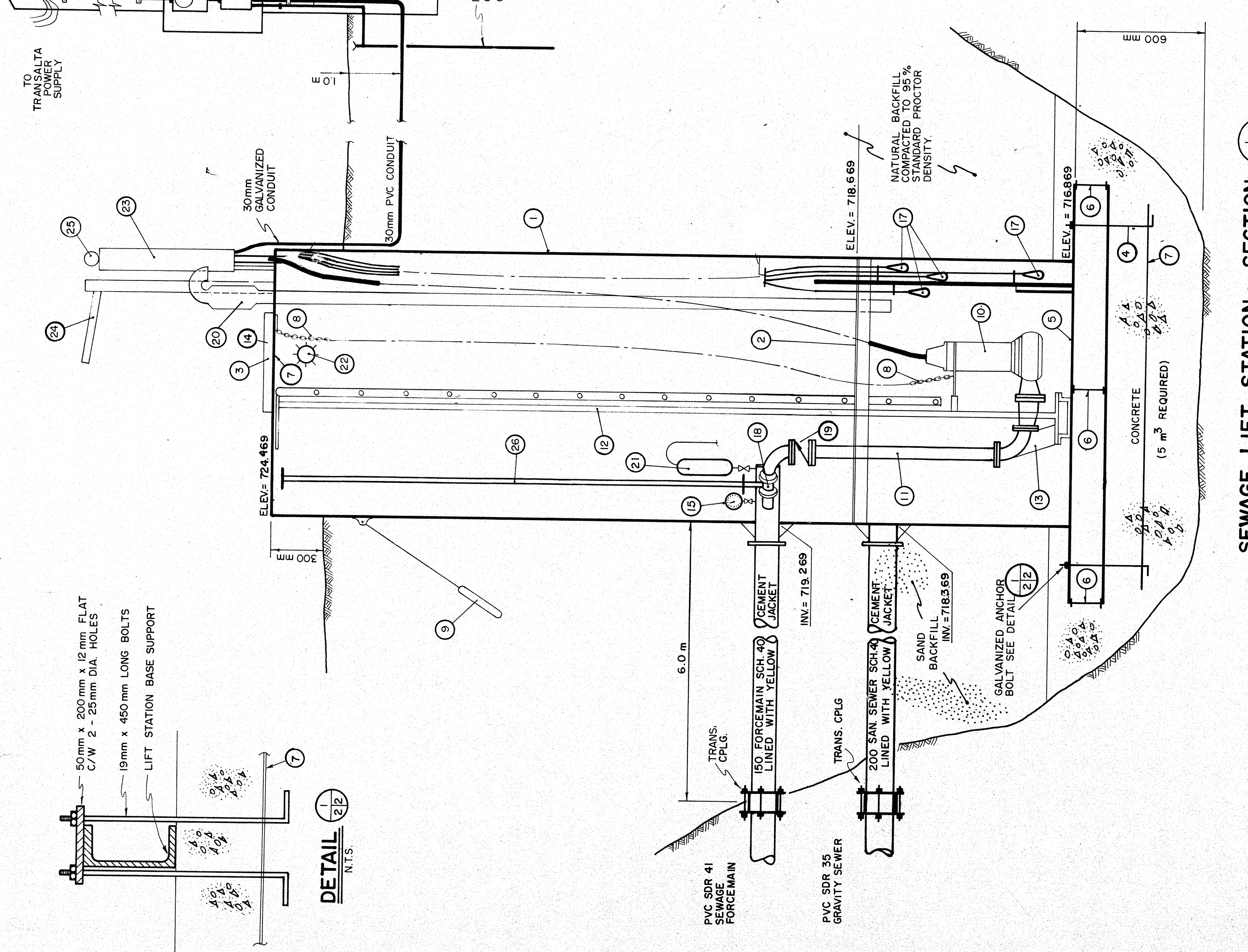
SITE PLAN
5m 0 1 2m



DETAIL
N.T.S.

SEWAGE LIFT STATION - PLAN VIEW
N.T.S.

- EQUIPMENT SCHEDULE - ALBERTA BEACH LIFT STATION NO. 2**
- 1800 DIA. CONTINUOUSLY WELDED STEEL TANK 6 MM WALL THICKNESS, SAND BLASTED, COATED FOR CORROSION PROTECTION
 - WORK PLATFORM WITH REMOVABLE SECTIONS FOR PUMP ACCESS
 - ALUMINUM HATCH COVERS WITH HINGES, LOCK DEVICES
 - M15 ANCHOR BOLTS 450 X 19
 - C150 X 22 I-BEAM - 2438 LONG (2 REQUIRED)
 - C150 X 22 I-BEAM - 880 LONG (3 REQUIRED)
 - RE-BAR MAT 15M AT 300 EACH WAY
 - 38 X 38 X 6 CHAIN FOR PUMP REMOVAL
 - 8 KG MAGNESIUM ANODES (2 REQUIRED)
 - 230V SINGLE PHASE, FLYGT MODEL 3201 (IMP 438) 3.9 HP, 230 VOLT, SINGLE PHASE, SUBMERSIBLE, SEWAGE PUMPS EACH CAPABLE OF 270 USGPM AT 30'
 - 100 MM SCHEDULE 40 STEEL PIPE AND FITTINGS
 - SLIDE RAIL SYSTEM
 - 100 MM DISCHARGE BASE ASSEMBLY
 - PROVIDE GRAB BARS ON UNDERSIDE OF HATCH LID
 - PRESSURE GAUGE C/W ISOLATION VALVE
 - MERCURY FLOAT SWITCHES
 - 100 MM GATE VALVE C/W EXTENSION STEM TO TOP OF TANK
 - 100 MM CHECK VALVE
 - COMBINATION VENTILATION FAN AND HEATER C/W DUCTING TO HIGH WATER LEVEL
 - AIR RELEASE VALVE
 - WALL MOUNTED EXPLOSION PROOF 150 WATT LIGHT FIXTURE
 - CONTROL PANEL, TANK MOUNTED
 - ROTATING LIFTING DAVIT
 - ALARM BEACON MOUNTED ON TOP OF CONTROL PANEL
 - VALVE OPERATOR EXTENSION TO TOP OF TANK. PROVIDE OPERATION WHEELS AT TOP AND NEAR VALVE.
 - EXHAUST VENT



SEWAGE LIFT STATION - SECTION
N.T.S.

REFER TO DRAWING 99 FOR CONCRETE WELL ALTERNATE

LEGEND

GRAVITY SEWER, MANHOLE, INVERT, AND DIRECTION OF FLOW
FORCEMAIN
ART PEDESTAL
CSP CONDUIT WITH
FOUND LEGAL MARKER
POWER POLE W/ GUY
FENCE (INDICATED BY SPACED)
GAS REGULATOR STATION
POWERLINE
GA S LINE
TELEPHONE LINE

SIEMENS
SIEMENS ENGINEERING SERVICES LTD.
AS-BUILT
DATE: 9/10/98
REVIEWED BY: [Signature]

PERMIT TO PRACTICE
SIEMENS ENGINEERING SERVICES LTD.
Signature: [Signature]
Date: 9/10/98
PERMIT NUMBER: P 2998
The Association of Professional Engineers, Geologists and Geophysicists of Alberta

PROFESSIONAL ENGINEER ALBERTA
[Stamp]

No.	DATE	DESCRIPTION	BY	APP
1	11/90	AS BUILT	DF	PM

SCALE	AS SHOWN
DESIGNED BY	EDN
CHECKED BY	[Signature]
PROJECT No.	60-89-1
DRAWN BY	DFP
DATE	MAR., 1990

SIEMENS
SIEMENS ENGINEERING SERVICES LTD.
CIVIL & MUNICIPAL ENGINEERS
DEVELOPMENT CONSULTANTS • PLANNERS