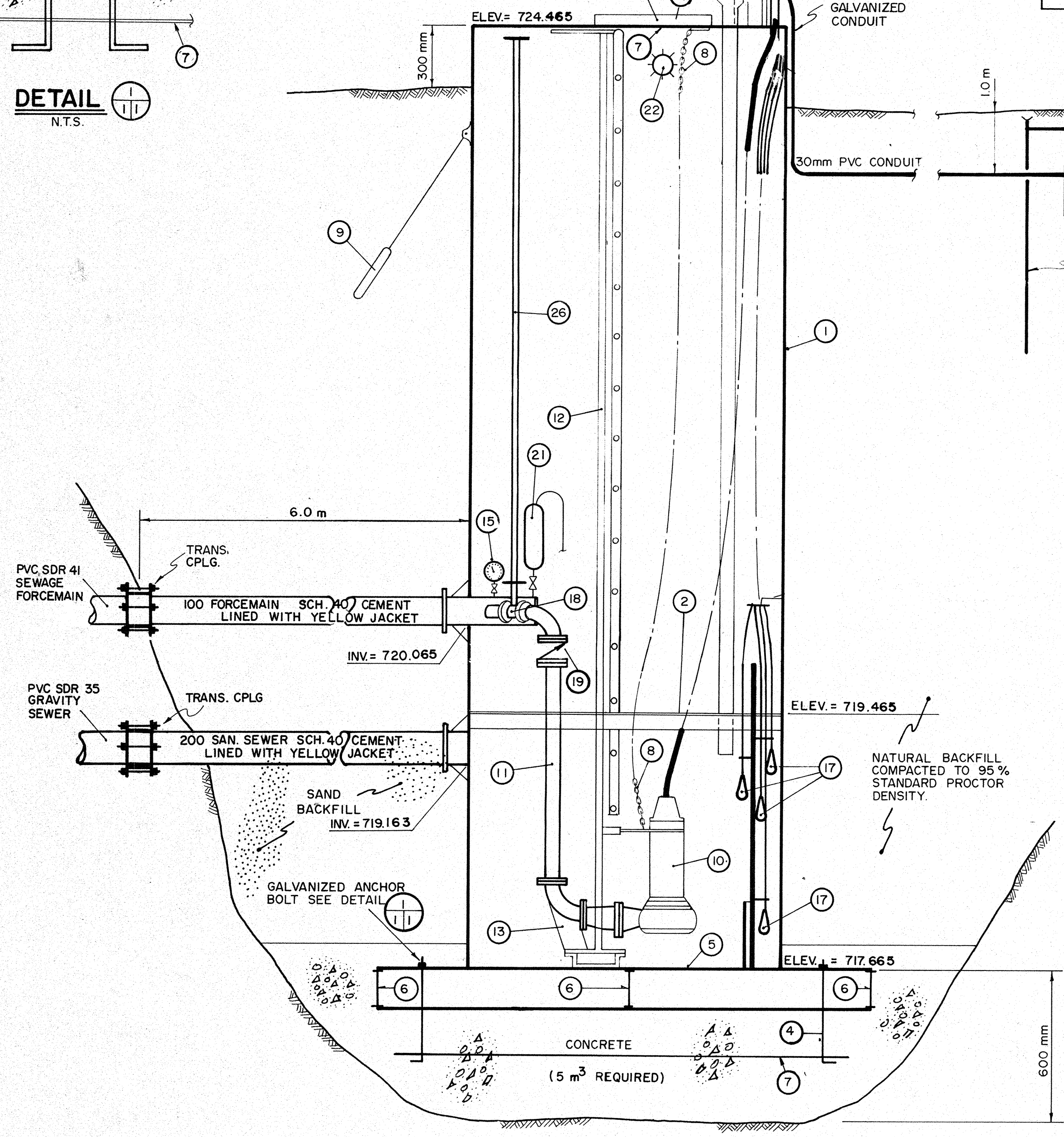
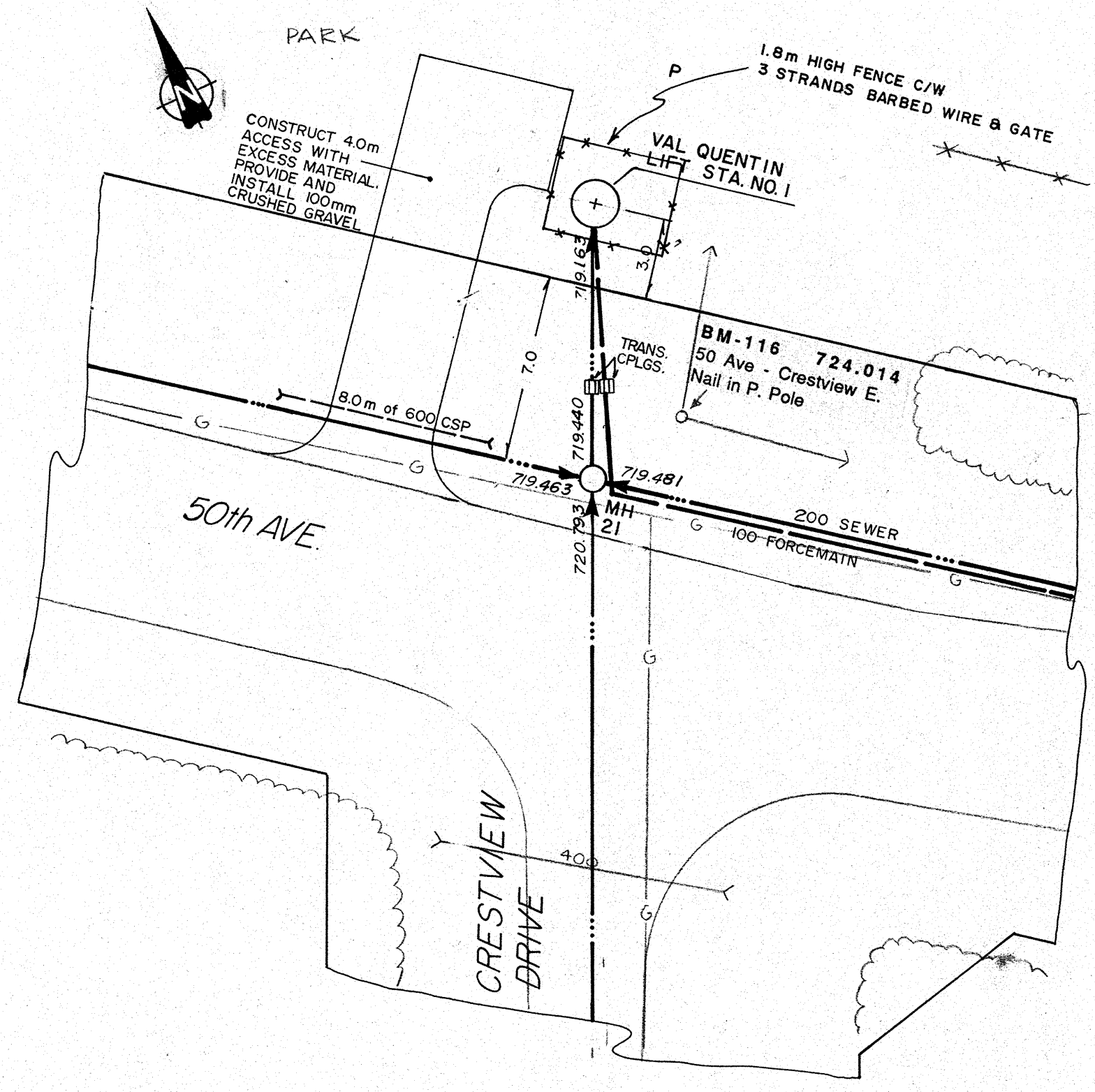


**SEWAGE LIFT STATION - PLAN VIEW**  
N.T.S.



**SEWAGE LIFT STATION - SECTION**  
N.T.S.

REFER TO DRAWING D.3 FOR CONCRETE WET WELL ALTERNATE



**SITE PLAN**

**EQUIPMENT SCHEDULE - VAL QUENTIN LIFT STATION NO. 1**

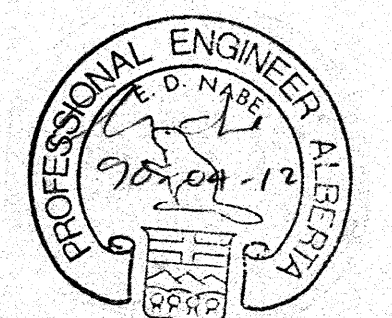
- 1 1800 DIA. CONTINUOUSLY WELDED STEEL TANK 6 MM WALL THICKNESS, SAND BLASTED, COATED FOR CORROSION PROTECTION
- 2 WORK PLATFORM WITH REMOVABLE SECTIONS FOR PUMP ACCESS
- 3 ALUMINUM HATCH COVERS WITH HINGES, LOCK DEVICES
- 4 M15 ANCHOR BOLTS 450 X 19
- 5 C150 X 22 I-BEAM - 2438 LONG (2 REQUIRED)
- 6 C150 X 22 I-BEAM - 880 LONG (3 REQUIRED)
- 7 RE-BAR MAT 15M AT 300 EACH WAY
- 8 38 X 38 X 6 CHAIN FOR PUMP REMOVAL
- 9 8 KG MAGNESIUM ANODES (2 REQUIRED)
- 10 230V SINGLE PHASE, FLYGT MODEL 3201 (IMP 433) 3.9 HP, 230 VOLT, SINGLE PHASE, SUBMERSIBLE, SEWAGE PUMPS EACH CAPABLE OF 115 USGPM AT 30'
- 11 100 MM SCHEDULE 40 STEEL PIPE AND FITTINGS
- 12 SLIDE RAIL SYSTEM
- 13 100 MM DISCHARGE BASE ASSEMBLY
- 14 PROVIDE GRAB BARS ON UNDERSIDE OF HATCH LID
- 15 PRESSURE GAUGE C/W ISOLATION VALVE
- 17 MERCURY FLOAT SWITCHES
- 18 100 MM GATE VALVE C/W EXTENSION STEM TO TOP OF TANK
- 19 100 MM CHECK VALVE
- 20 COMBINATION VENTILATION FAN AND HEATER C/W DUCTING TO HIGH WATER LEVEL
- 21 AIR RELEASE VALVE
- 22 WALL MOUNTED EXPLOSION PROOF 150 WATT LIGHT FIXTURE
- 23 CONTROL PANEL, TANK MOUNTED
- 24 ROTATING LIFTING DAVIT
- 25 ALARM BEACON MOUNTED ON TOP OF CONTROL PANEL
- 26 VALVE OPERATOR EXTENSION TO TOP OF TANK. PROVIDE OPERATION WHEELS AT TOP AND NEAR VALVE.
- 27 EXHAUST VENT

**SIEMENS**  
SIEMENS ENGINEERING SERVICES LTD.  
**AS-BUILT**  
DATE: 7/1/90  
REVIEWED BY: [Signature]

**LEGEND**

- MH GRAVITY SEWER, MANHOLE INVERT, AND DIRECTION OF FLOW
- FORCEMAIN
- AGT PEDESTAL
- CSP CULVERT W/DIA.
- FOUND LEGAL MARKER
- POWER POLE W/ GLY
- FENCE (WF-WIRE, GLF-CHAIN LINK, BF-BOARD, RF-RAIL, GF-GUARDRAIL, SF-SNOW)
- △ GAS REGULATOR STATION
- POWER LINE
- GAS LINE
- TELEPHONE LINE
- ▽ SERVICE CONNECTION

**PERMIT TO PRACTICE**  
SIEMENS ENGINEERING SERVICES LTD.  
Signature: [Signature]  
Date: 02-09-12  
**PERMIT NUMBER: P 2098**  
The Association of Professional Engineers,  
Geologists and Geophysicists of Alberta



No.	DATE	DESCRIPTION	BY	APP
1	11/90	AS BUILT	DF	PM
<b>REVISIONS</b>				

SCALE	ASSHOWN	PROJECT No.	60-89-1
DESIGNED BY	EDN	DRAWN BY	DFP
CHECKED BY	[Signature]	DATE	MAR., 1990

**SIEMENS**  
SIEMENS ENGINEERING SERVICES LTD.  
CIVIL & MUNICIPAL ENGINEERS  
DEVELOPMENT CONSULTANTS • PLANNERS

<b>TRI-VILLAGE REGIONAL SEWAGE COMMISSION</b>	
<b>SUMMER VILLAGE OF VAL QUENTIN SEWAGE COLLECTION SYSTEM</b>	
LIFT STATION NO. 1 DETAILS	
SHEET	OF
DWG. No.	LS 1.1