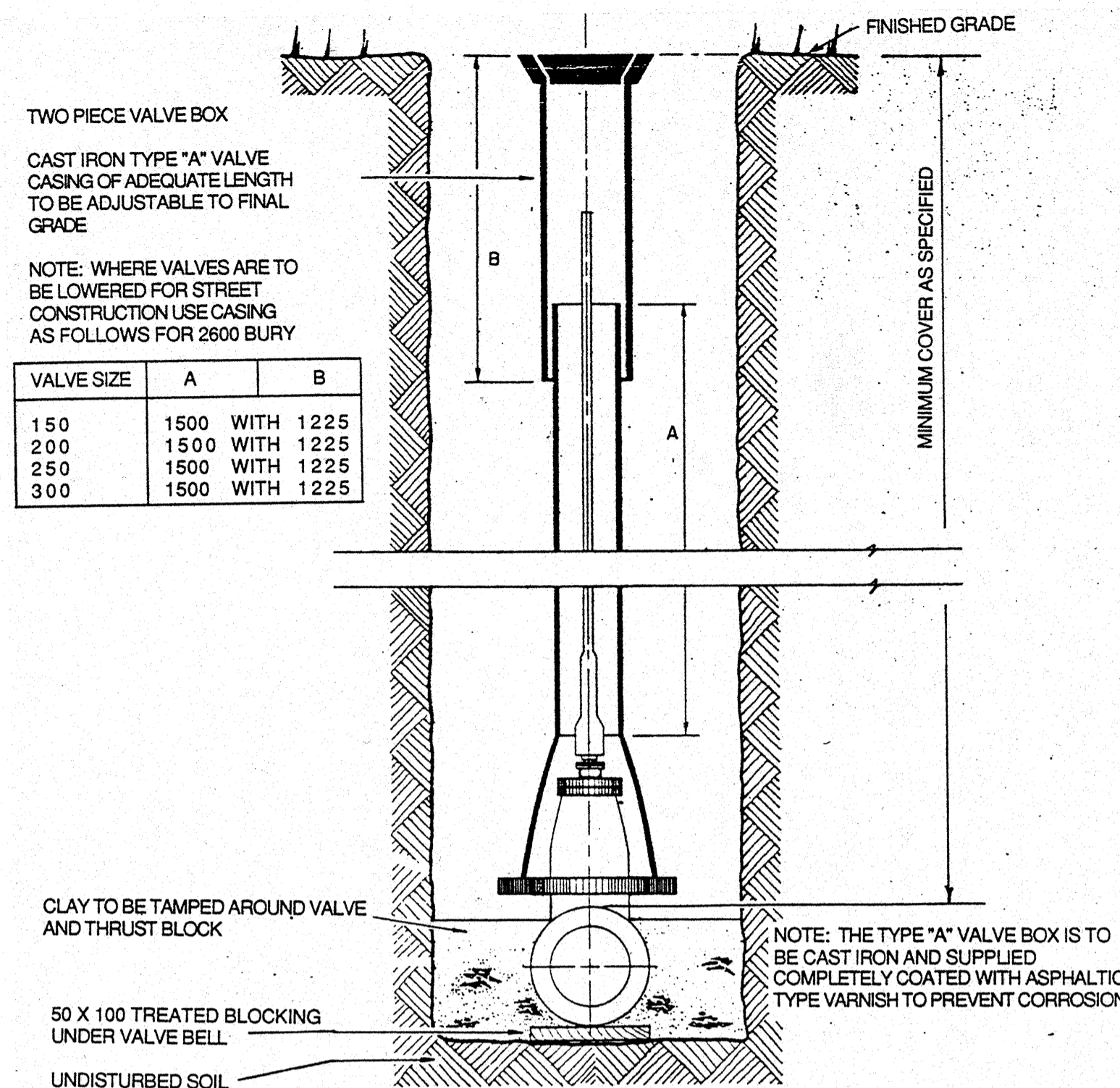
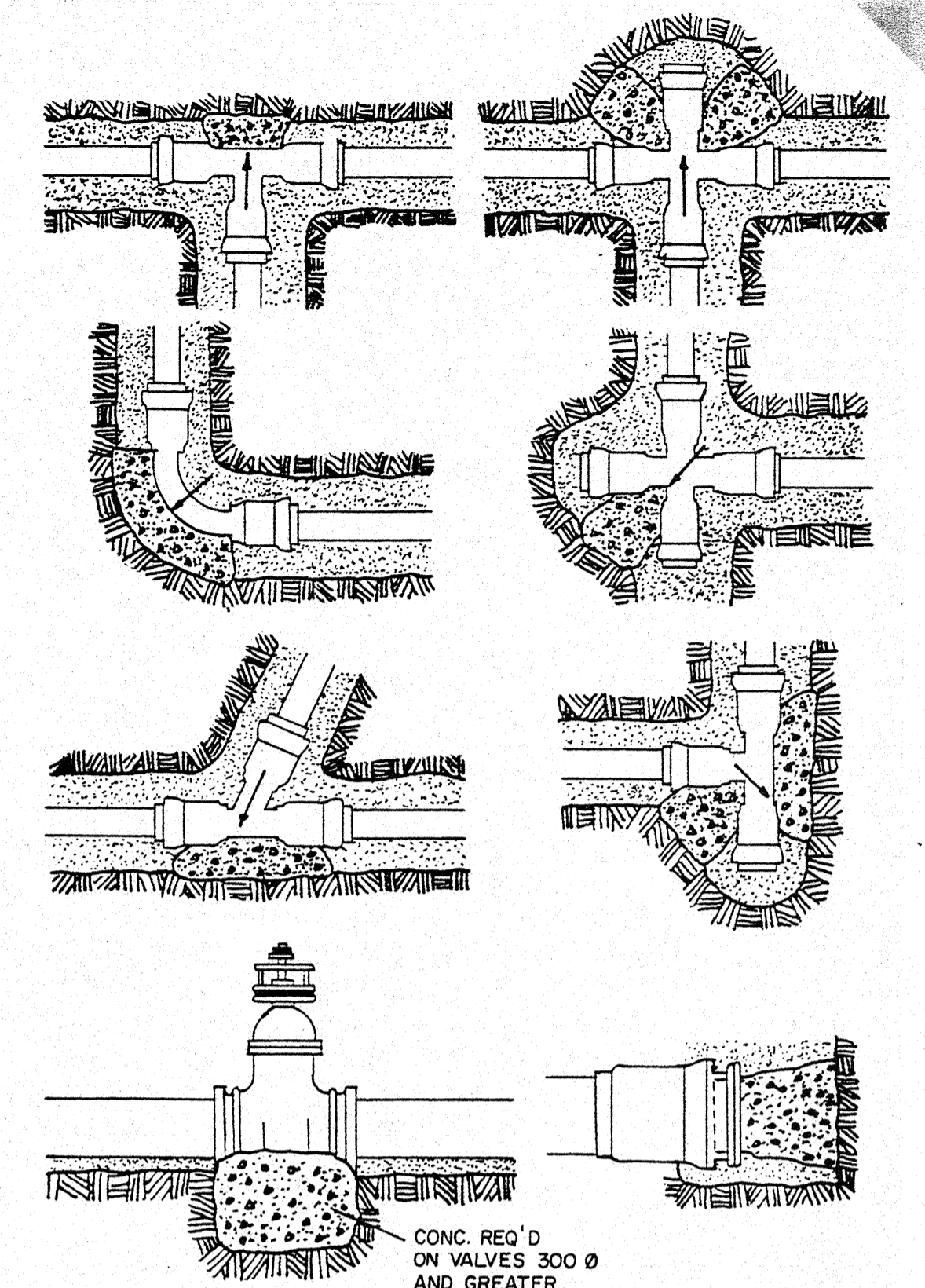


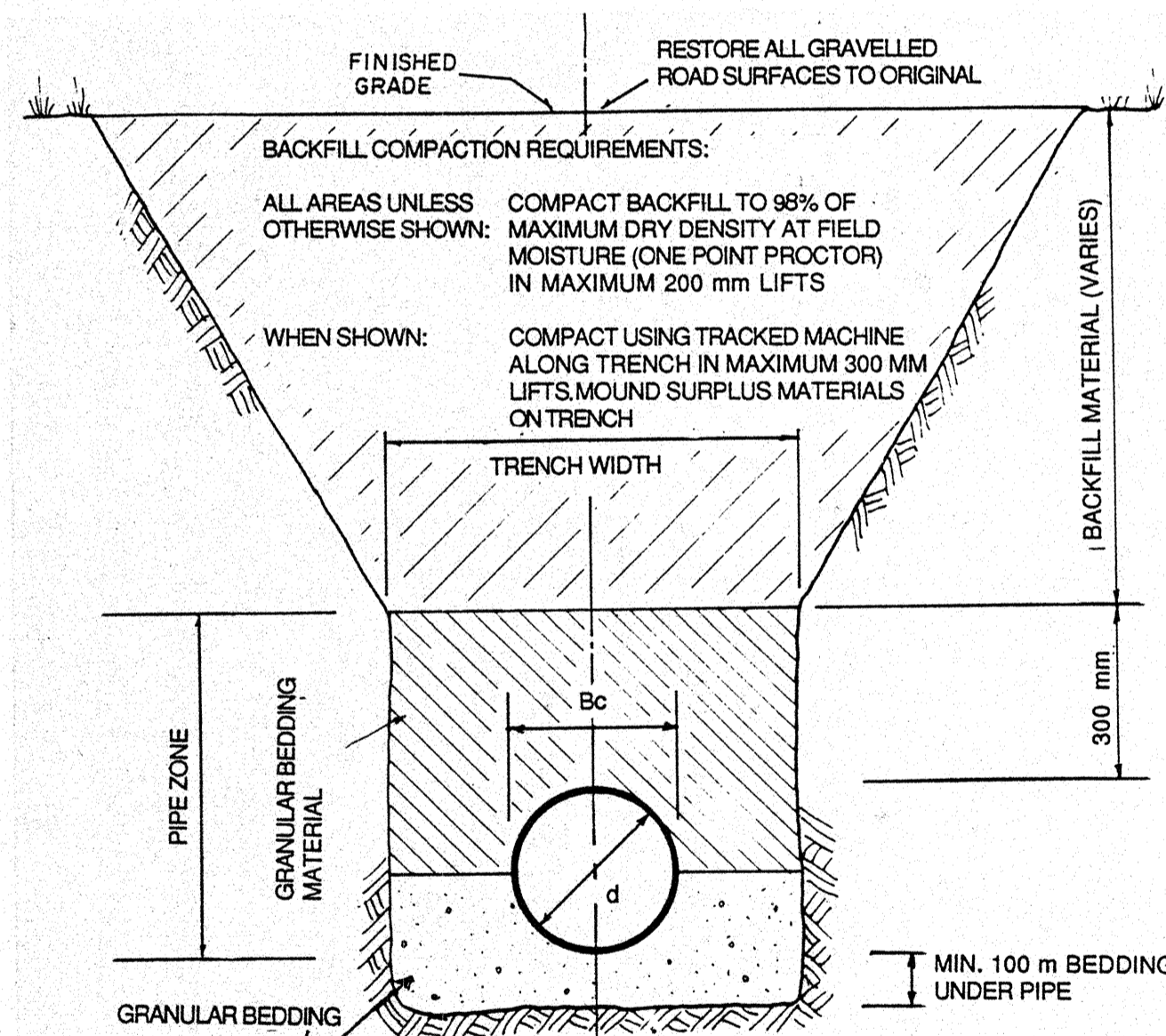
**SERVICE CONNECTION
SINGLE TRENCH**
N.T.S.



MAIN VALVE CASING DETAIL
N.T.S.

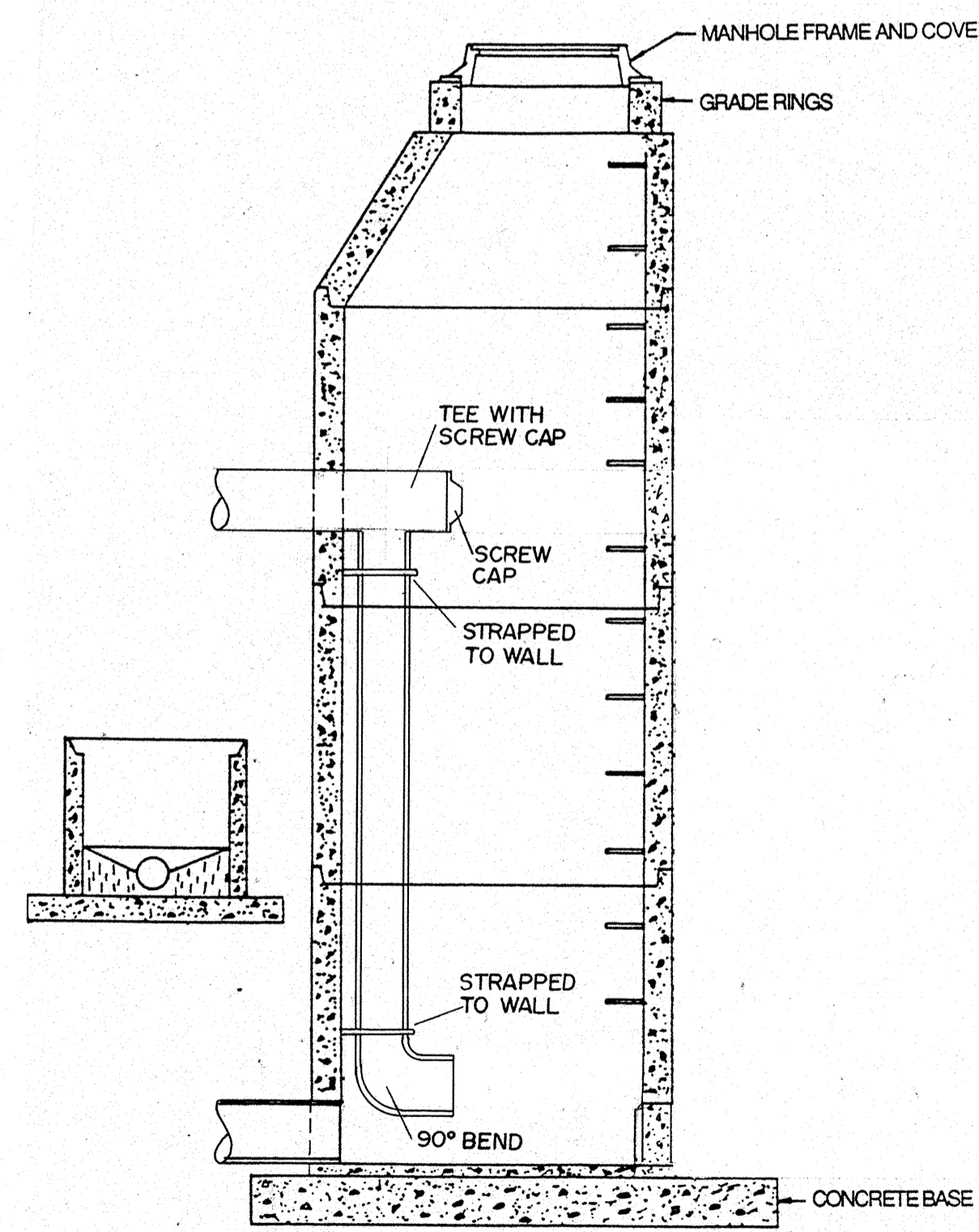


HORIZONTAL THRUST BLOCK DETAILS
N.T.S.

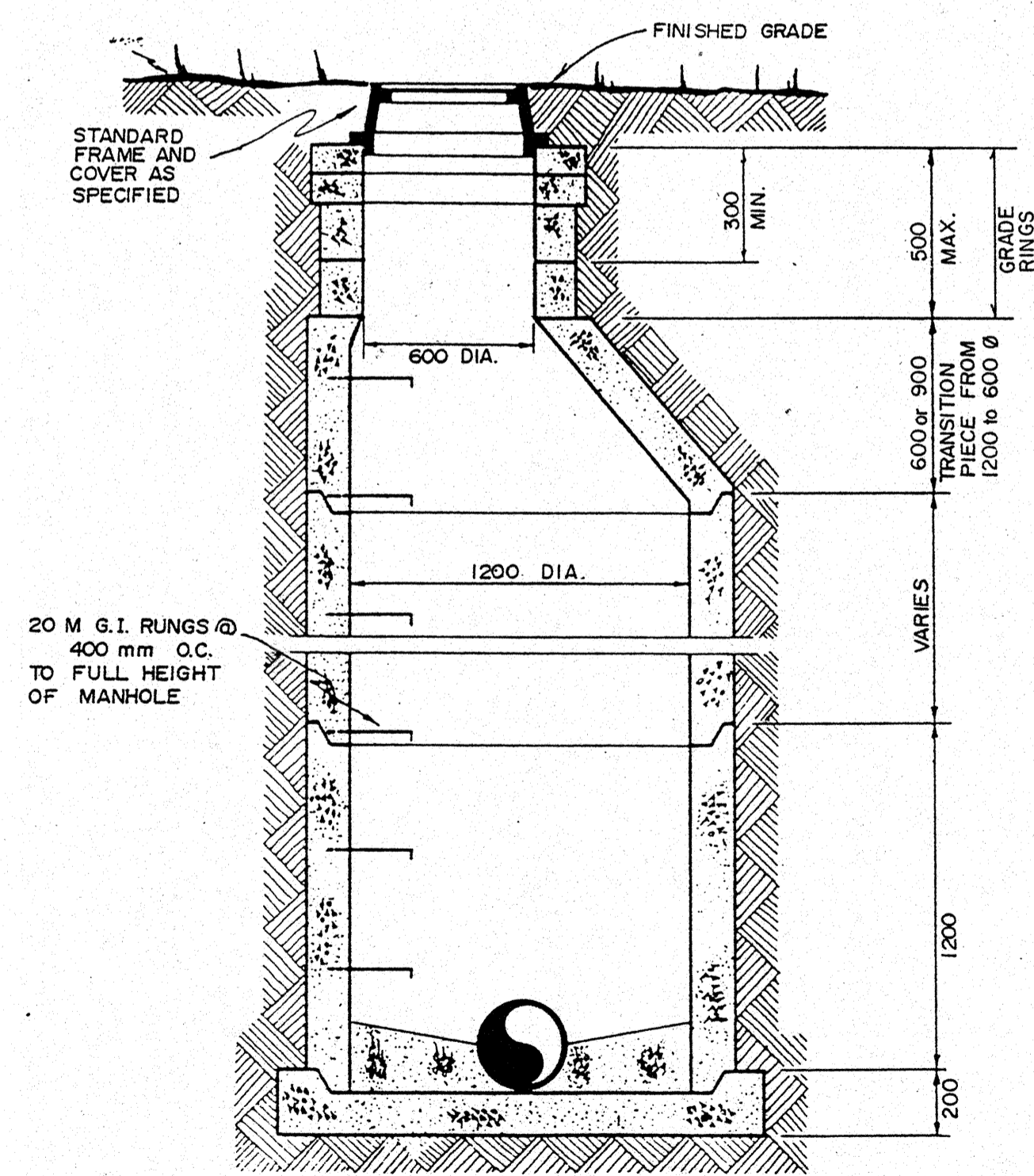


PIPE SIZE	TRENCH WIDTH	
	MAXIMUM	MINIMUM
UP TO 525 mm DIA.	1050 mm	Bc + 200 mm

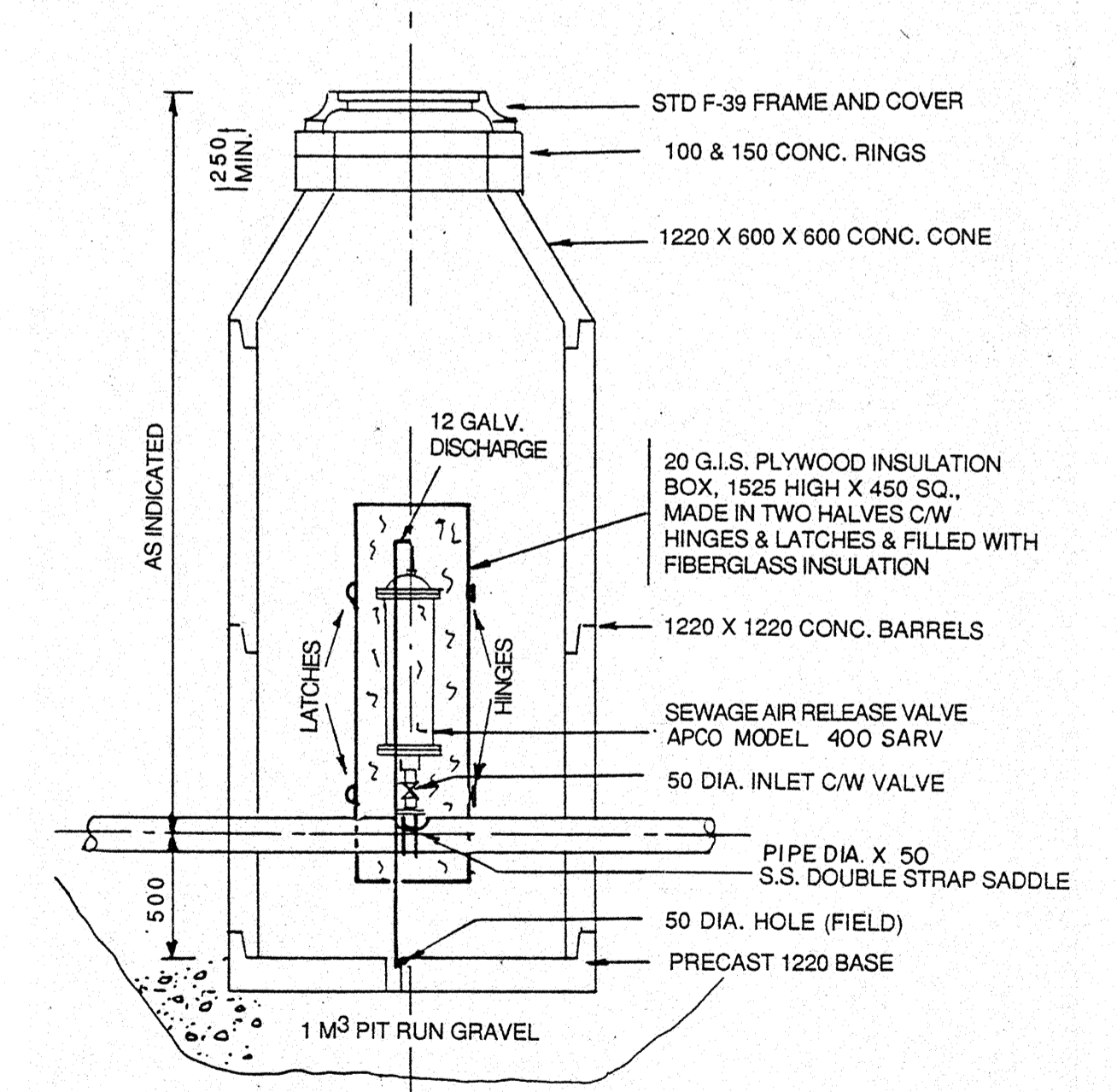
TYPICAL TRENCH AND PIPE BEDDING DETAIL
N.T.S.



DROP MANHOLE
N.T.S.



STANDARD 1200mm DIA. MANHOLE
N.T.S.

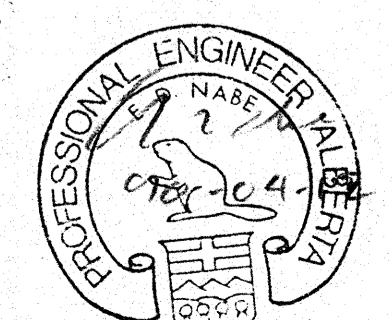


AIR RELEASE MANHOLE FOR SEWAGE FORCEMAIN
N.T.S.

LEGEND

SIEMENS
SIEMENS ENGINEERING SERVICES LTD.
AS-BUILT
DATE: 91-04-08
REVIEWED BY:

PERMIT TO PRACTICE
SIEMENS ENGINEERING SERVICES LTD.
Signature: [Signature]
Date: 91-04-12
PERMIT NUMBER: P 2998
The Association of Professional Engineers, Geologists and Geophysicists of Alberta



No.	DATE	DESCRIPTION	BY	APP
1	11/90	AS BUILT	DF	PM
REVISIONS				

SCALE	PROJECT No.
NOT TO SCALE	60-89-1
DESIGNED BY	DRAWN BY
EDN	DF
CHECKED BY	DATE
[Signature]	MAR., 1990

SIEMENS
SIEMENS ENGINEERING SERVICES LTD.
CIVIL & MUNICIPAL ENGINEERS
DEVELOPMENT CONSULTANTS • PLANNERS

TRI-VILLAGE REGIONAL SEWAGE COMMISSION
SUMMER VILLAGES OF VAL QUENTIN, ALBERTA BEACH AND SUNSET POINT
SEWAGE COLLECTION SYSTEM
DETAILS
SHEET OF DWG. No. D. I