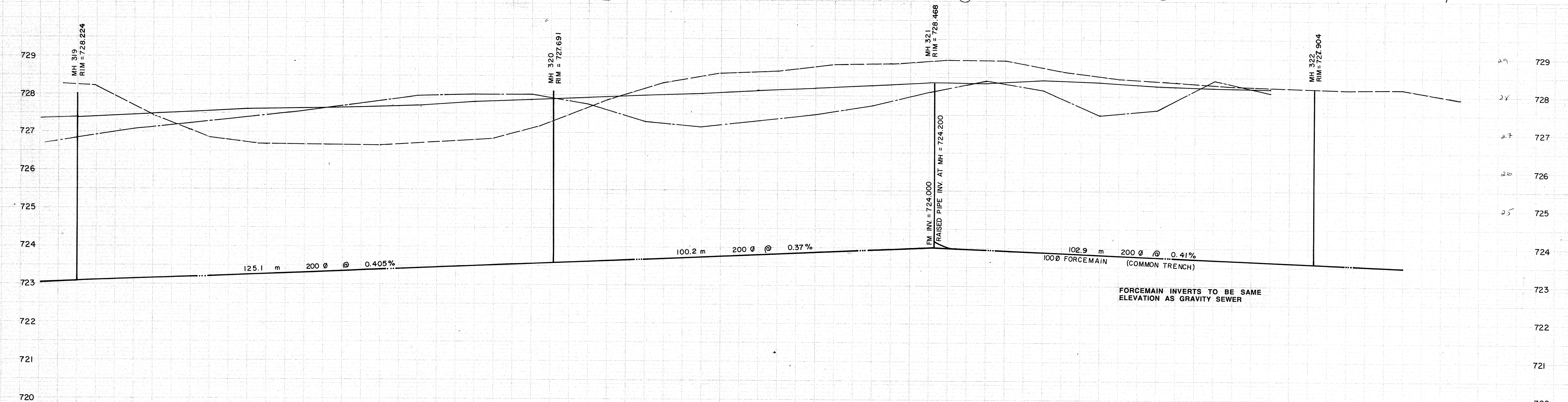
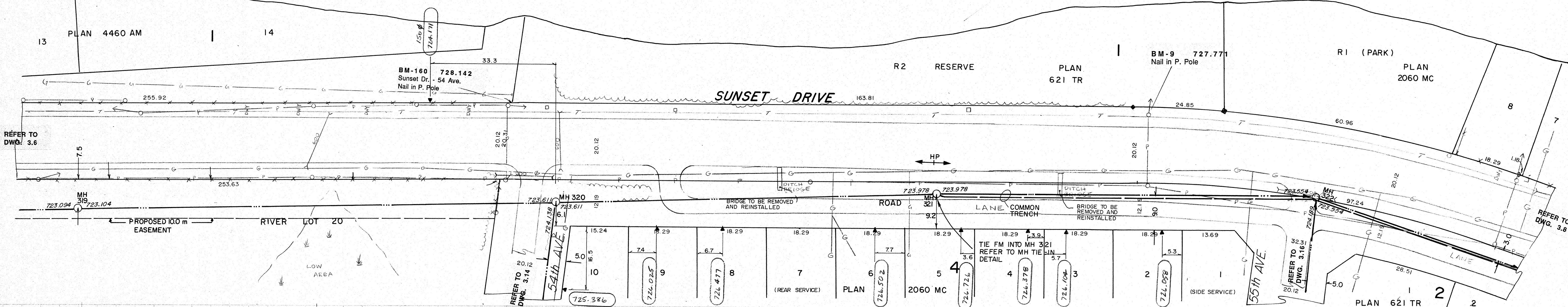


Lac Ste. Anne

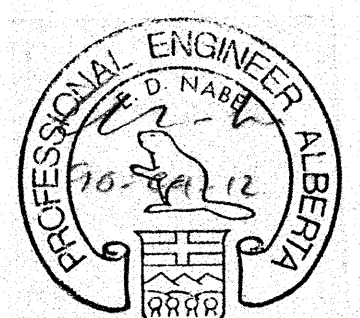


FORCEMAIN INVERTS TO BE SAME ELEVATION AS GRAVITY SEWER

- NOTES:
1. LOCATION OF EXISTING UTILITIES ARE APPROXIMATE ONLY (A.G.T., GAS, ETC.)
  2. UTILITIES MAY EXIST WHICH ARE NOT SHOWN ON THIS DRAWING.
  3. CONTRACTOR IS RESPONSIBLE FOR GETTING UTILITY COMPANIES TO MARK OUT ALL THEIR LINES (MAINS AND SERVICES).
  4. CONTRACTOR IS RESPONSIBLE FOR ANY DAMAGE TO EXISTING UTILITIES WHETHER SHOWN ON THIS DRAWING OR NOT.

**SIEMENS**  
SIEMENS ENGINEERING SERVICES LTD.  
**AS-BUILT**  
DATE: 91-04-03  
REVIEWED BY: [Signature]

**PERMIT TO PRACTICE**  
SIEMENS ENGINEERING SERVICES LTD.  
Signature: [Signature]  
Date: 91-04-17  
**PERMIT NUMBER: P 2098**  
The Association of Professional Engineers, Geologists and Geophysicists of Alberta



No.	DATE	DESCRIPTION	BY	APP
I	11/90	AS BUILT	DF	PM
REVISIONS				

SCALE  
HORIZ. 1:100  
VERT. 1:10  
DESIGNED BY EDN  
CHECKED BY [Signature]

PROJECT No. 60-89-1  
DRAWN BY DFF  
DATE MAR., 1990

**SIEMENS**  
SIEMENS ENGINEERING SERVICES LTD.  
CIVIL & MUNICIPAL ENGINEERS  
DEVELOPMENT CONSULTANTS • PLANNERS

TRI-VILLAGE REGIONAL SEWAGE COMMISSION  
**SUMMER VILLAGE OF SUNSET POINT SEWAGE COLLECTION SYSTEM**  
SUNSET DRIVE  
SOUTH OF 53rd AVE. to 55th AVE.  
SHEET OF DWG. No. 3.7

**LEGEND**

<ul style="list-style-type: none"> <li>—○— GRAVITY SEWER, MANHOLE, INVERT, AND DIRECTION OF FLOW</li> <li>—□— FORCEMAIN (100 DIA.)</li> <li>— — — EXISTING GROUND PROFILE AT CONSTRUCTION SITE</li> <li>— — — EXISTING PROPERTY LINE PROFILE, AT RIGHT</li> <li>— — — EXISTING PROPERTY LINE PROFILE, AT LEFT</li> <li>— — — EXISTING DITCH AT RIGHT OF ROAD</li> <li>— — — EXISTING DITCH AT LEFT OF ROAD</li> <li>◆ FOUND LEGAL MARKER</li> <li>○ POWER POLE W/ GLUY</li> <li>○ GLUY POLE, SERVICE OR LIGHT STANDARD POLE</li> <li>⊕ HAND PUMP</li> </ul>	<ul style="list-style-type: none"> <li>⊙ TEST HOLE OR BORE HOLE</li> <li>□ AGT PEDESTAL</li> <li>— CSP CULVERT W/DIA.</li> <li>— CONC. CULVERT W/DIA.</li> <li>— FENCE (WF-WIRE, CLF-CHAIN LINK, BF-BOARD, RF-RAIL, GR-GUARDRAIL, SF-SNOW)</li> <li>△ GAS REGULATOR STATION</li> <li>○ CATCH BASIN</li> <li>— POWER LINE</li> <li>— GAS LINE</li> <li>— TELEPHONE LINE</li> <li>◆ SERVICE CONNECTION</li> </ul>
---	---