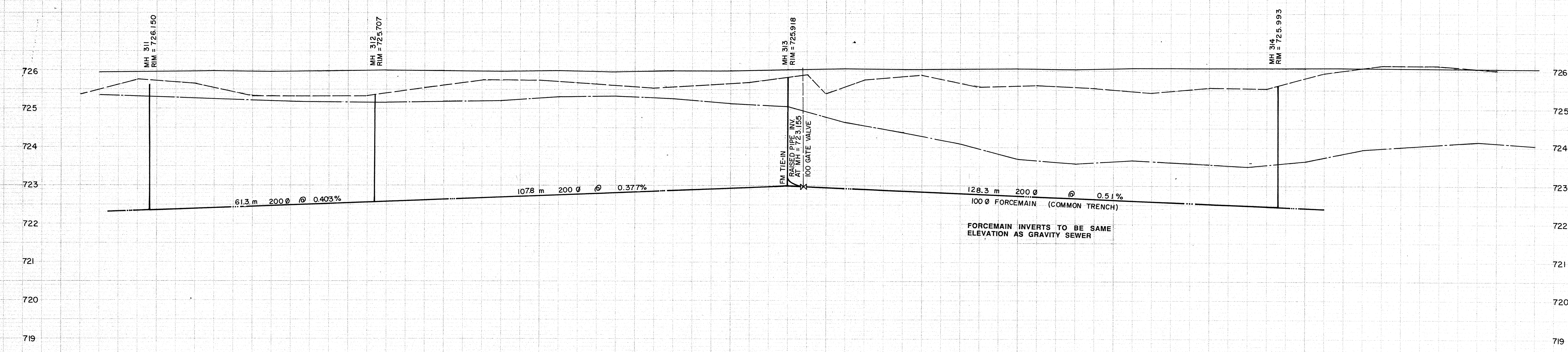
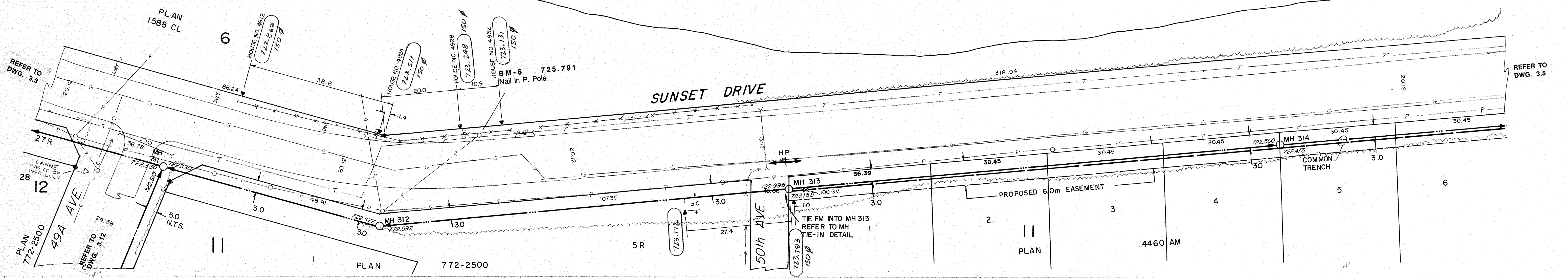


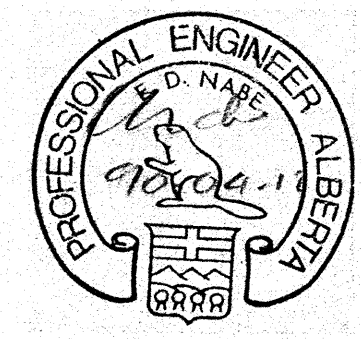
Lac Ste. Anne



- NOTES:**
1. LOCATION OF EXISTING UTILITIES ARE APPROXIMATE ONLY (A.G.T., GAS, ETC.)
  2. UTILITIES MAY EXIST WHICH ARE NOT SHOWN ON THIS DRAWING.
  3. CONTRACTOR IS RESPONSIBLE FOR GETTING UTILITY COMPANIES TO MARK OUT ALL THEIR LINES (MAINS AND SERVICES).
  4. CONTRACTOR IS RESPONSIBLE FOR ANY DAMAGE TO EXISTING UTILITIES WHETHER SHOWN ON THIS DRAWING OR NOT.

**SIEMENS**  
SIEMENS ENGINEERING SERVICES LTD.  
**AS-BUILT**  
DATE: 91-04-03  
REVIEWED BY: [Signature]

**PERMIT TO PRACTICE**  
SIEMENS ENGINEERING SERVICES LTD.  
Signature: [Signature]  
Date: 90-04-17  
**PERMIT NUMBER: P 2998**  
The Association of Professional Engineers,  
Geologists and Geophysicists of Alberta



No.	DATE	DESCRIPTION	BY	APP
1	11/90	AS BUILT	DF	FM
<b>REVISIONS</b>				

SCALE  
HORIZ. 1:500  
VERT. 1:100  
DESIGNED BY EDN  
CHECKED BY [Signature]

PROJECT No. 60-89-1  
DRAWN BY DFF  
DATE MAR., 1990

**SIEMENS**  
SIEMENS ENGINEERING SERVICES LTD.  
CIVIL & MUNICIPAL ENGINEERS  
DEVELOPMENT CONSULTANTS • PLANNERS

TRI-VILLAGE REGIONAL SEWAGE COMMISSION  
**SUMMER VILLAGE OF SUNSET POINT  
SEWAGE COLLECTION SYSTEM**  
SUNSET DRIVE  
NORTH OF 50th AVE.  
SHEET OF DWG. No. 3.4

LEGEND	TEST HOLE OR BORE HOLE
—○— GRAVITY SEWER, MANHOLE INVERT, AND DIRECTION OF FLOW	□ AGT PEDESTAL
—○— FORCEMAIN (100 DIA.)	—○— CSP CULVERT WIDIA
—○— EXISTING GROUND PROFILE AT CONSTRUCTION SITE	—○— CONC. CULVERT WIDIA
—○— EXISTING PROPERTY LINE PROFILE, AT RIGHT	—○— FENCE (W/F WIRE, CLF-CHAIN LINK, BF-BOARD, RF-RAIL, GR-GUARDRAIL, SF-SNOW)
—○— EXISTING PROPERTY LINE PROFILE, AT LEFT	△ GAS REGULATOR STATION
—○— EXISTING DITCH AT RIGHT OF ROAD	○ CATCH BASIN
—○— EXISTING DITCH AT LEFT OF ROAD	—○— POWER LINE
—○— FOUND LEGAL MARKER	—○— GAS LINE
—○— POWER POLE W/ GLUY	—○— TELEPHONE LINE
—○— GUY POLE, SERVICE OR LIGHT STANDARD POLE	▼ SERVICE CONNECTION
—○— HAND PUMP	