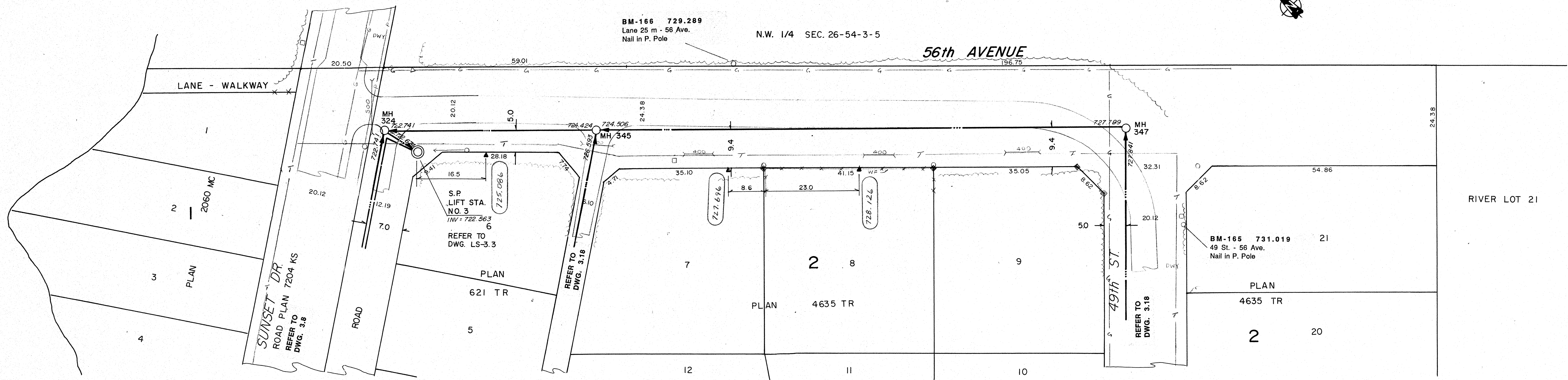
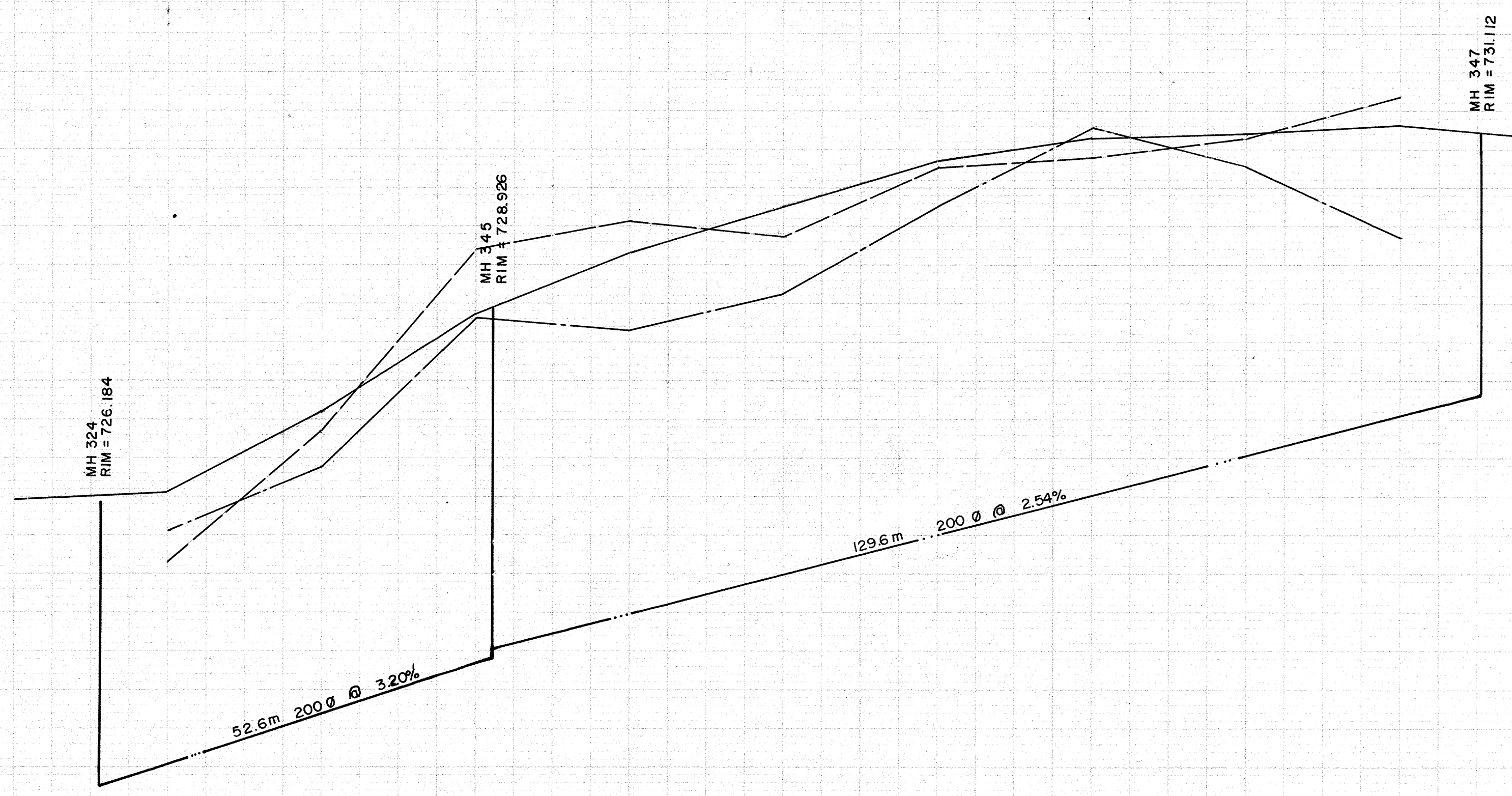


Lac Ste. Anne



731
730
729
728
727
726
725
724
723
722
721

731
730
729
728
727
726
725
724
723
722
721

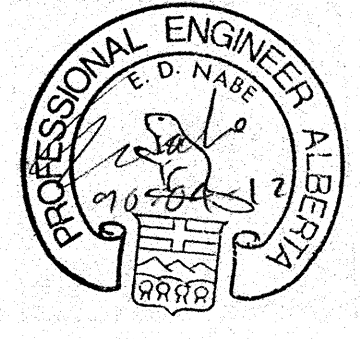


SIEMENS
SIEMENS ENGINEERING SERVICES LTD.
AS-BUILT
DATE: 91-04-03
REVIEWED BY: [Signature]

- NOTES:**
1. LOCATION OF EXISTING UTILITIES ARE APPROXIMATE ONLY (A.G.T., GAS, ETC.)
 2. UTILITIES MAY EXIST WHICH ARE NOT SHOWN ON THIS DRAWING.
 3. CONTRACTOR IS RESPONSIBLE FOR GETTING UTILITY COMPANIES TO MARK OUT ALL THEIR LINES (MAINS AND SERVICES).
 4. CONTRACTOR IS RESPONSIBLE FOR ANY DAMAGE TO EXISTING UTILITIES WHETHER SHOWN ON THIS DRAWING OR NOT.

LEGEND	
—○—	GRAVITY SEWER, MAN-HOLE, INVERT, AND DIRECTION OF FLOW
—	FORCEMAIN
---	EXISTING GROUND PROFILE AT CONSTRUCTION SITE
---	EXISTING PROPERTY LINE PROFILE, AT RIGHT
---	EXISTING PROPERTY LINE PROFILE, AT LEFT
---	EXISTING DITCH AT RIGHT OF ROAD
---	EXISTING DITCH AT LEFT OF ROAD
◆	FOUND LEGAL MARKER
○	POWER POLE W/ GUY
○	GUY POLE, SERVICE OR LIGHT STANDARD POLE
⊕	HAND PUMP
⊙	TEST HOLE OR BORE HOLE
□	AGT PEDESTAL
—	CSP CULVERT WIDTH
—	CONC. CULVERT WIDTH
—	FENCE (W/F-WIRE, CLF-CHAIN LINK, BF-BOARD, RF-RAIL, GR-GUARDRAIL, SF-SNOW)
⊕	GAS REGULATOR STATION
△	CATCH BASIN
—	POWER LINE
—	GAS LINE
—	TELEPHONE LINE
▼	SERVICE CONNECTION

PERMIT TO PRACTICE
SIEMENS ENGINEERING SERVICES LTD.
Signature: [Signature]
Date: 06-04-12
PERMIT NUMBER: P 2998
The Association of Professional Engineers, Geologists and Geophysicists of Alberta



No.	DATE	DESCRIPTION	BY	APP
1	11/90	AS BUILT	DF	PM
REVISIONS				

SCALE
HORIZ. 1:500
VERT. 1:100

DESIGNED BY EDN
CHECKED BY [Signature]

PROJECT No. 60-89-1
DRAWN BY DFF
DATE MAR., 1990

SIEMENS
SIEMENS ENGINEERING SERVICES LTD.
CIVIL & MUNICIPAL ENGINEERS
DÉVELOPPEMENT CONSULTANTS • PLANNERS

TRI-VILLAGE REGIONAL SEWAGE COMMISSION
SUMMER VILLAGE OF SUNSET POINT SEWAGE COLLECTION SYSTEM
56TH AVENUE
SUNSET DRIVE to 49th ST.
49TH STREET
SHEET OF DWG. No. 3.19