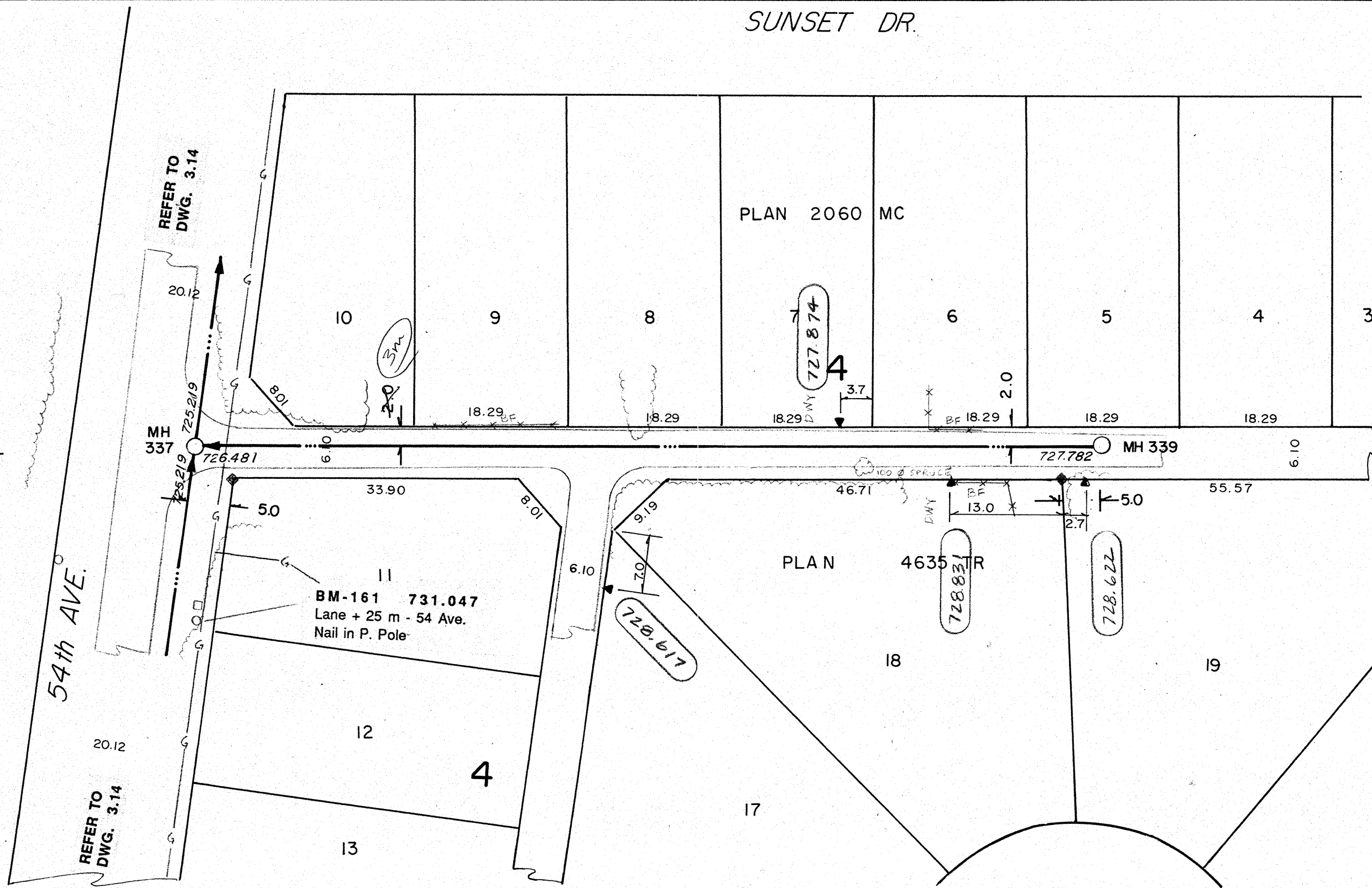
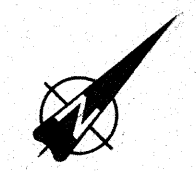
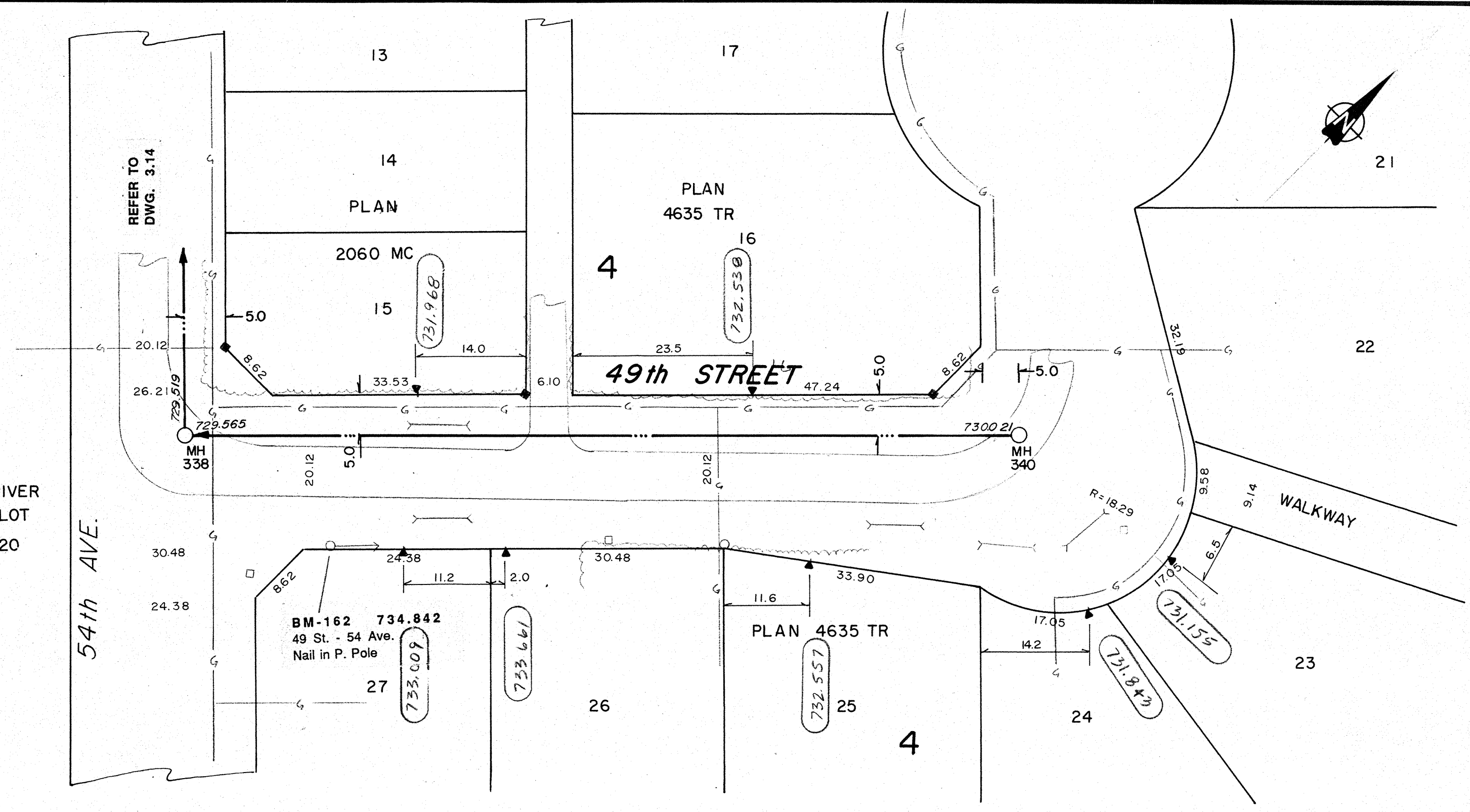


SUNSET DR.

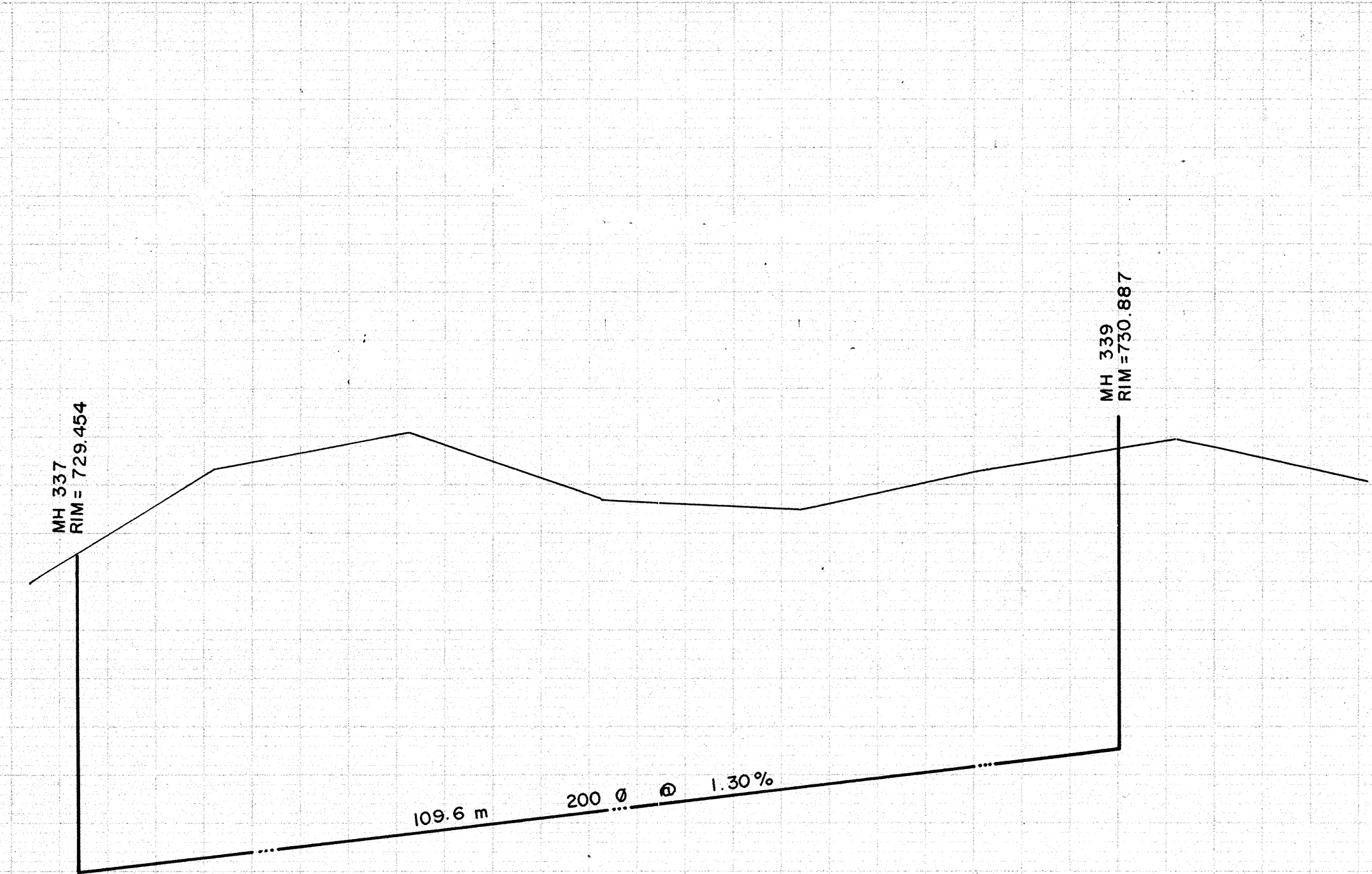
RIVER LOT 20



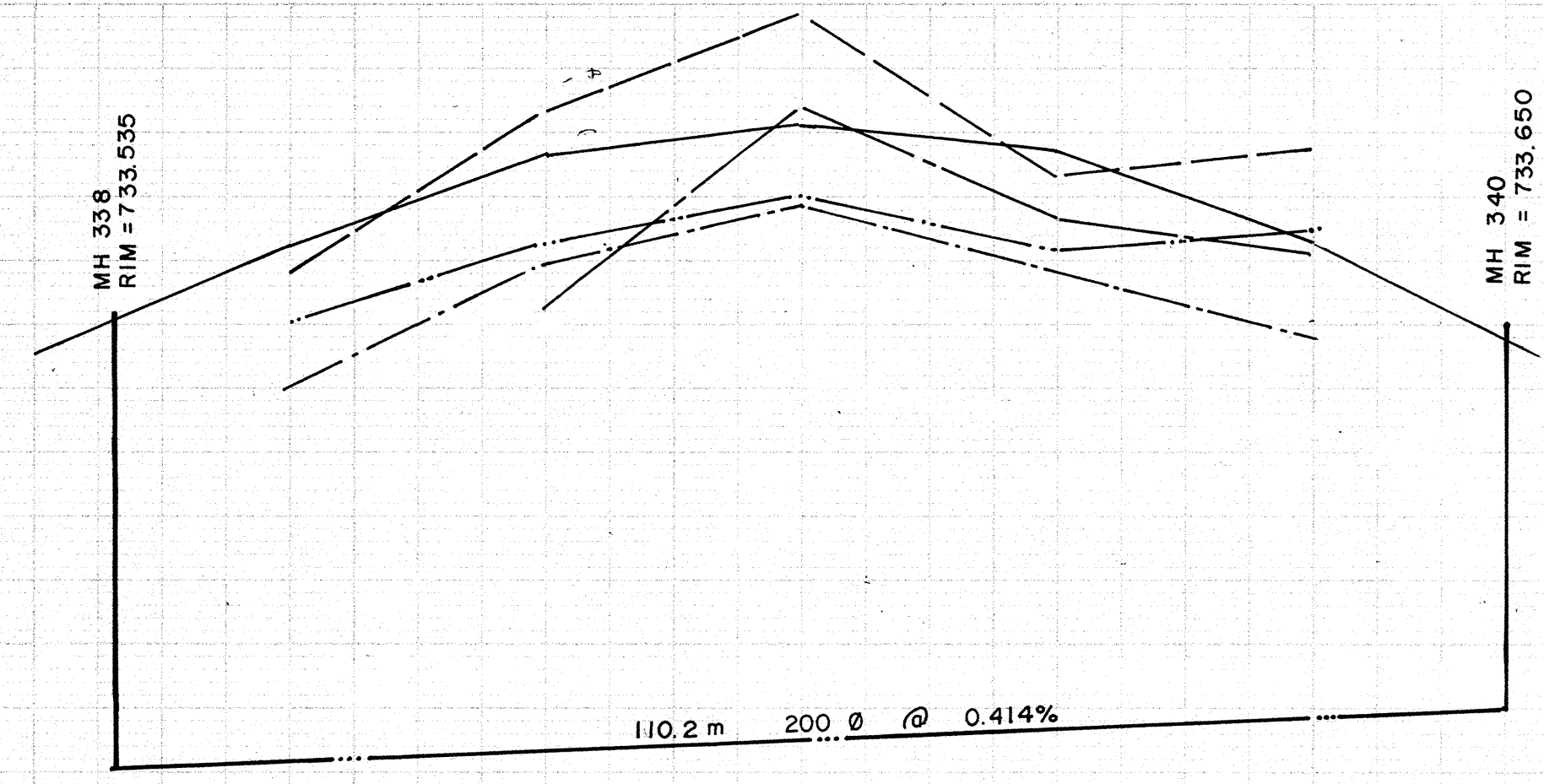
RIVER LOT 20



734
733
732
731
730
729
728
727



734
733
732
731
730
729
728
727

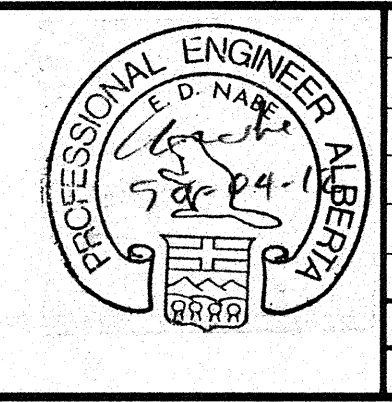


SIEMENS
SIEMENS ENGINEERING SERVICES LTD.
AS-BUILT
DATE: 91-04-03
REVIEWED BY: *[Signature]*

- NOTES:**
1. LOCATION OF EXISTING UTILITIES ARE APPROXIMATE ONLY (A.G.T., GAS, ETC.)
 2. UTILITIES MAY EXIST WHICH ARE NOT SHOWN ON THIS DRAWING.
 3. CONTRACTOR IS RESPONSIBLE FOR GETTING UTILITY COMPANIES TO MARK OUT ALL THEIR LINES (MAINS AND SERVICES).
 4. CONTRACTOR IS RESPONSIBLE FOR ANY DAMAGE TO EXISTING UTILITIES WHETHER SHOWN ON THIS DRAWING OR NOT.

LEGEND	
—○—	GRAVITY SEWER, MANHOLE, INVERT, AND DIRECTION OF FLOW
—	FORCE MAIN
—	EXISTING GROUND PROFILE AT CONSTRUCTION SITE
—	EXISTING PROPERTY LINE PROFILE, AT RIGHT
—	EXISTING PROPERTY LINE PROFILE, AT LEFT
—	EXISTING DITCH AT RIGHT OF ROAD
—	EXISTING DITCH AT LEFT OF ROAD
+	FOUND LEGAL MARKER
—○—	POWER POLE W/ GLY
—○—	GLY POLE, SERVICE OR LIGHT STANDARD POLE
—	HAND PUMP
⊙	TEST HOLE OR BORE HOLE
□	AGT PEDESTAL
—	CSP CULVERT W/DIA.
—	CONC. CULVERT W/DIA.
—	FENCE (W/F-WIRE, CLF-CHAIN LINK, BF-BOARD, RF-RAIL, GR-GUARDRAIL, SF-SNOW)
△	GAS REGULATOR STATION
○	CATCH BASIN
—	POWER LINE
—	GAS LINE
—	TELEPHONE LINE
▼	SERVICE CONNECTION

PERMIT TO PRACTICE
SIEMENS ENGINEERING SERVICES LTD.
Signature: *[Signature]*
Date: 91-04-17
PERMIT NUMBER: P 2998
The Association of Professional Engineers, Geologists and Geophysicists of Alberta



No.	DATE	DESCRIPTION	BY	APP
1	11/90	AS BUILT	DF	PM
REVISIONS				

SCALE
HORIZ. 1:100
VERT. 1:10
DESIGNED BY EDN
CHECKED BY *[Signature]*

PROJECT No. 60-89-1
DRAWN BY DFF
DATE MAR., 1990

SIEMENS
SIEMENS ENGINEERING SERVICES LTD.
CIVIL & MUNICIPAL ENGINEERS
DEVELOPMENT CONSULTANTS • PLANNERS

TRI-VILLAGE REGIONAL SEWAGE COMMISSION
SUMMER VILLAGE OF SUNSET POINT SEWAGE COLLECTION SYSTEM
49th STREET
54th AVE. to CUL-DE-SAC & LANE OFF 54th AVE.
SHEET OF DWG. No. 3.15