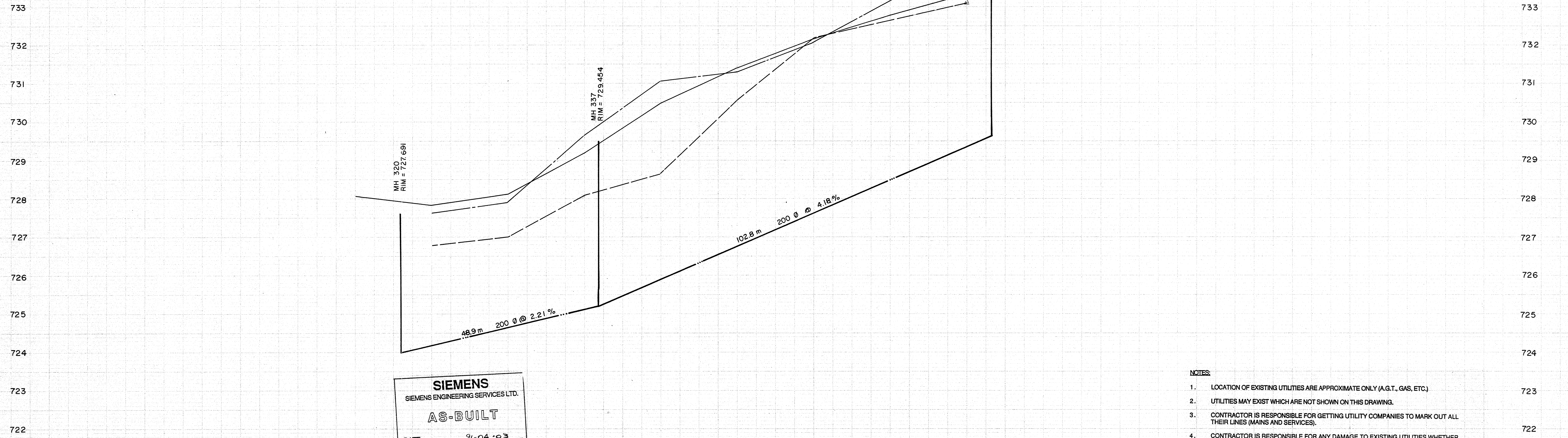
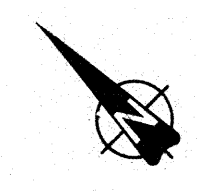
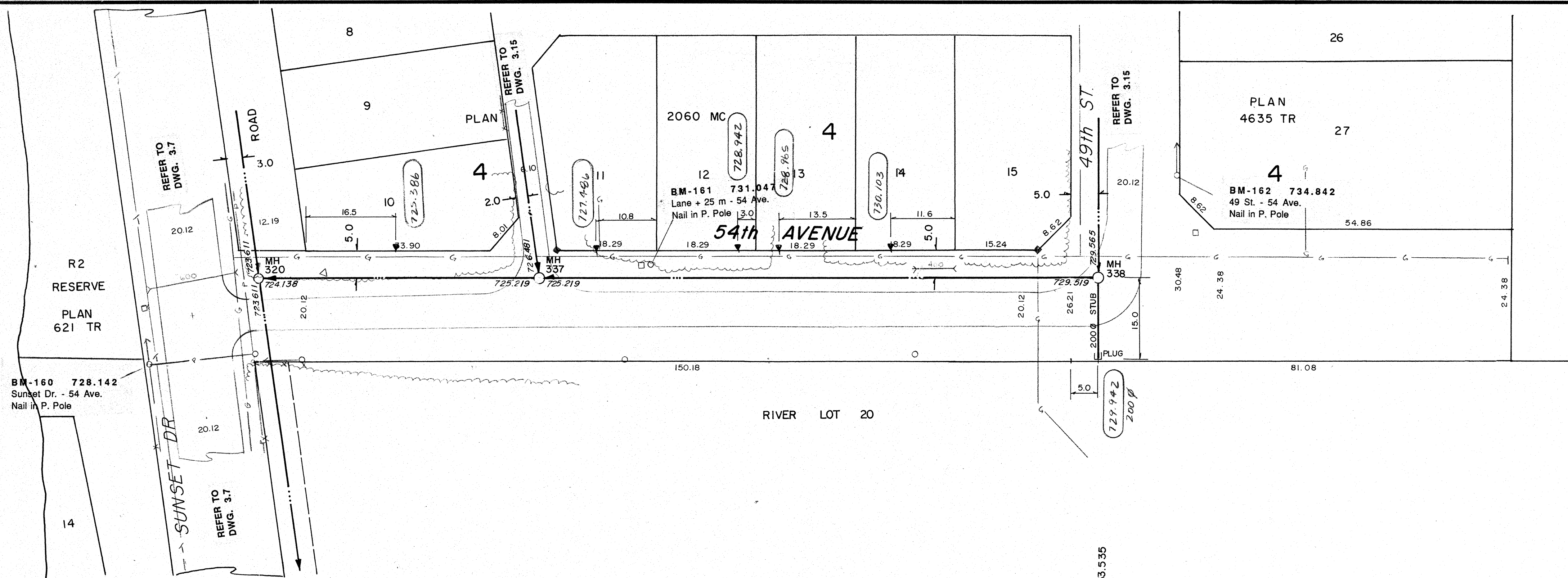


Lac Ste. Anne

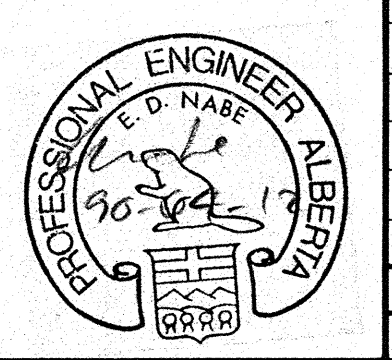


SIEMENS
SIEMENS ENGINEERING SERVICES LTD.
AS-BUILT
DATE: 9-04-03
REVIEWED BY: [Signature]

- NOTES:**
1. LOCATION OF EXISTING UTILITIES ARE APPROXIMATE ONLY (A.G.T., GAS, ETC.)
 2. UTILITIES MAY EXIST WHICH ARE NOT SHOWN ON THIS DRAWING.
 3. CONTRACTOR IS RESPONSIBLE FOR GETTING UTILITY COMPANIES TO MARK OUT ALL THEIR LINES (MAINS AND SERVICES).
 4. CONTRACTOR IS RESPONSIBLE FOR ANY DAMAGE TO EXISTING UTILITIES WHETHER SHOWN ON THIS DRAWING OR NOT.

LEGEND		TEST HOLE OR BOREHOLE	
—	GRAVITY SEWER, MANHOLE, INVERT, AND DIRECTION OF FLOW	⊙	TEST HOLE OR BOREHOLE
—	FORSEMAN	□	AGT PEDESTAL
—	EXISTING GROUND PROFILE AT CONSTRUCTION SITE	—	CSP CULVERT WIDIA.
—	EXISTING PROPERTY LINE PROFILE, AT RIGHT	—	CONC. CULVERT WIDIA.
—	EXISTING PROPERTY LINE PROFILE, AT LEFT	—	FENCE (WF-WIRE, CLF-CHAIN LINK, BF-BOARD, RF-RAIL, GR-GUARDRAIL, SF-SNOW)
—	EXISTING DITCH AT RIGHT OF ROAD	△	GAS REGULATOR STATION
—	EXISTING DITCH AT LEFT OF ROAD	○	CATCH BASIN
—	EXISTING LEGAL MARKER	—	POWER LINE
—	FOUND LEGAL MARKER	—	GAS LINE
—	POWER POLE W/ GUY	—	TELEPHONE LINE
—	GUY POLE, SERVICE OR LIGHT STANDARD POLE	—	▼ SERVICE CONNECTION
—	HAND PUMP		

PERMIT TO PRACTICE
SIEMENS ENGINEERING SERVICES LTD.
Signature: [Signature]
Date: 09-04-12
PERMIT NUMBER: P 2998
The Association of Professional Engineers, Geologists and Geophysicists of Alberta



No.	DATE	DESCRIPTION	BY	APP
1	11/90	AS BUILT	DF	PM
REVISIONS				

SCALE
HORIZ. 1:100
VERT. 1:10
DESIGNED BY EDN
CHECKED BY [Signature]

PROJECT No. 60-89-1
DRAWN BY DFF
DATE MAR., 1990

SIEMENS
SIEMENS ENGINEERING SERVICES LTD.
CIVIL & MUNICIPAL ENGINEERS
DEVELOPMENT CONSULTANTS • PLANNERS

TRI-VILLAGE REGIONAL SEWAGE COMMISSION
SUMMER VILLAGE OF SUNSET POINT
SEWAGE COLLECTION SYSTEM
54th AVENUE
SUNSET DRIVE to 49th ST.
SHEET OF DWG. No. 3.14