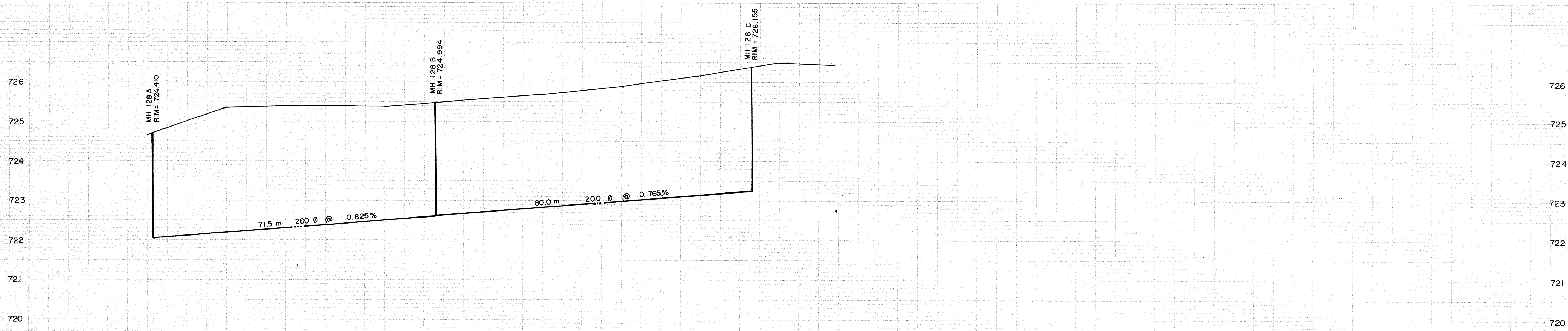
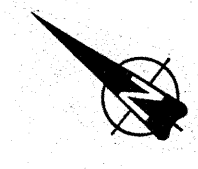
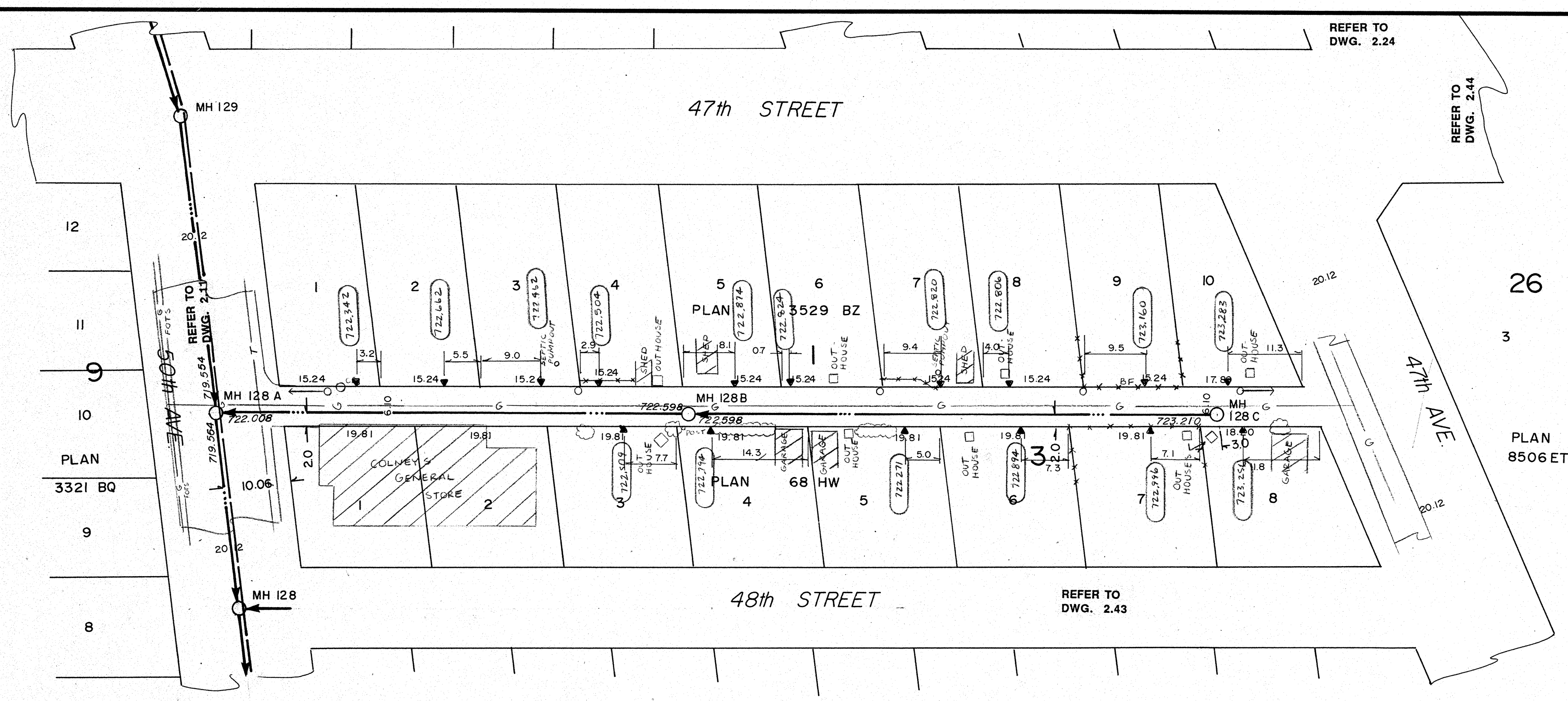


REFER TO DWG. 2.24

REFER TO DWG. 2.44

REFER TO DWG. 2.43



NOTES:

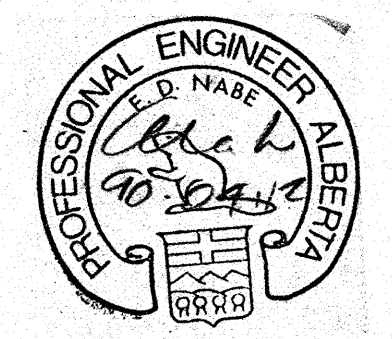
1. LOCATION OF EXISTING UTILITIES ARE APPROXIMATE ONLY (A.G.T., GAS, ETC.)
2. UTILITIES MAY EXIST WHICH ARE NOT SHOWN ON THIS DRAWING.
3. CONTRACTOR IS RESPONSIBLE FOR GETTING UTILITY COMPANIES TO MARK OUT ALL THEIR LINES (MAINS AND SERVICES).
4. CONTRACTOR IS RESPONSIBLE FOR ANY DAMAGE TO EXISTING UTILITIES WHETHER SHOWN ON THIS DRAWING OR NOT.

SIEMENS
SIEMENS ENGINEERING SERVICES LTD.
AS-BUILT
DATE: 9/04/08
REVIEWED BY: [Signature]

LEGEND

○ GRAVITY SEWER, MAN-HOLE, INVERT, AND DIRECTION OF FLOW	⊗ TEST HOLE OR BORE-HOLE
○ FORCEMAIN (300 DIA.)	□ AGT PEDESTAL
— EXISTING GROUND PROFILE AT CONSTRUCTION SITE	— CSP CULVERT WIDIA.
— EXISTING PROPERTY LINE PROFILE, AT RIGHT	— CONC. CULVERT WIDIA.
— EXISTING PROPERTY LINE PROFILE, AT LEFT	— FENCE (W/F-WIRE, CLF-CHAIN LINK, BF-BOARD, RF-RAIL, GR-GUARDRAIL, SF-SNOW)
— EXISTING DITCH AT RIGHT OF ROAD	△ GAS REGULATOR STATION
— EXISTING DITCH AT LEFT OF ROAD	△ CATCH BASIN
◆ FOUND LEGAL MARKER	— POWER LINE
← POWER POLE W/ GLY	— GAS LINE
○ GLY POLE, SERVICE OR LIGHT STANDARD POLE	— TELEPHONE LINE
⊕ HAND PUMP	▼ SERVICE CONNECTION

PERMIT TO PRACTICE
SIEMENS ENGINEERING SERVICES LTD.
Signature: [Signature]
Date: 9/04/08
PERMIT NUMBER: P 2998
The Association of Professional Engineers, Geologists and Geophysicists of Alberta



No.	DATE	DESCRIPTION	DF	PM
1	11/90	AS BUILT		
REVISIONS				

SCALE
HORIZ. 1:100
VERT. 1:10
DESIGNED BY EDN
CHECKED BY [Signature]

PROJECT No. 60-89-1
DRAWN BY DFF
DATE MAR., 1990

SIEMENS
SIEMENS ENGINEERING SERVICES LTD.
CIVIL & MUNICIPAL ENGINEERS
DEVELOPMENT CONSULTANTS • PLANNERS

TRI-VILLAGE REGIONAL SEWAGE COMMISSION
SUMMER VILLAGE OF ALBERTA BEACH SEWAGE COLLECTION SYSTEM
LANE SOUTH OF 47th STREET
50th AVE. to 47th AVE.
47th AVENUE
LANE NORTHERLY to 47th ST.
SHEET OF DWG. No. 2.58