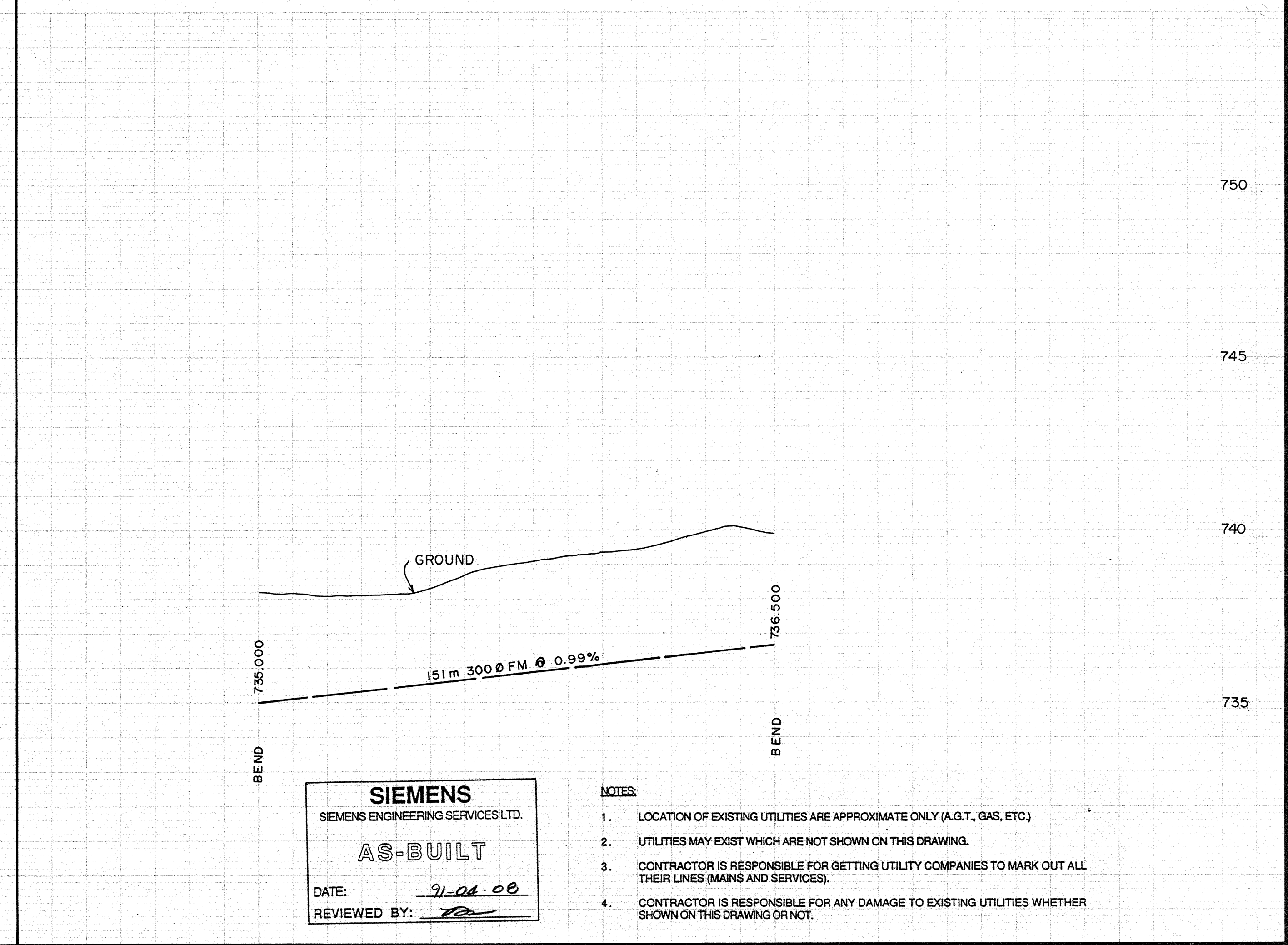
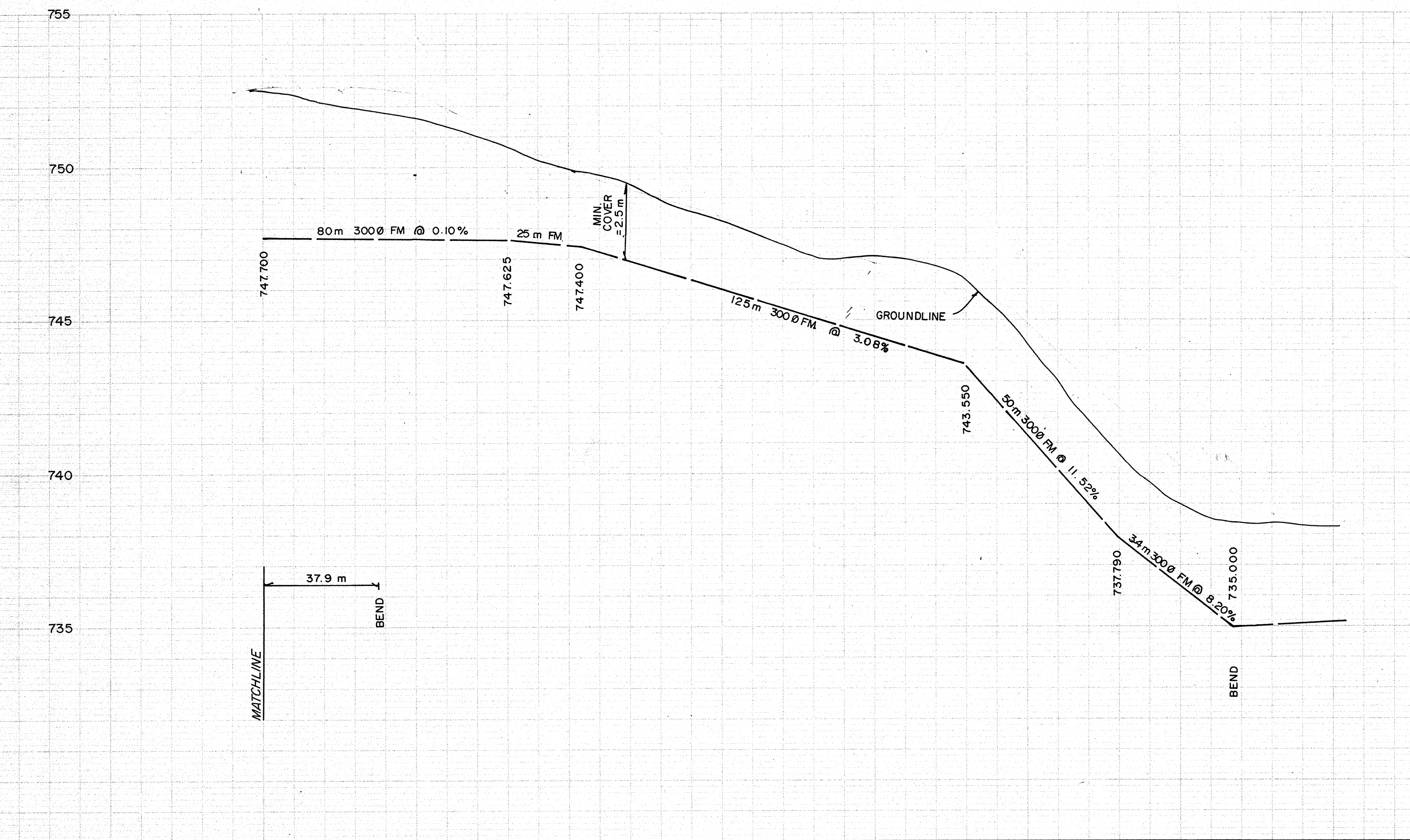
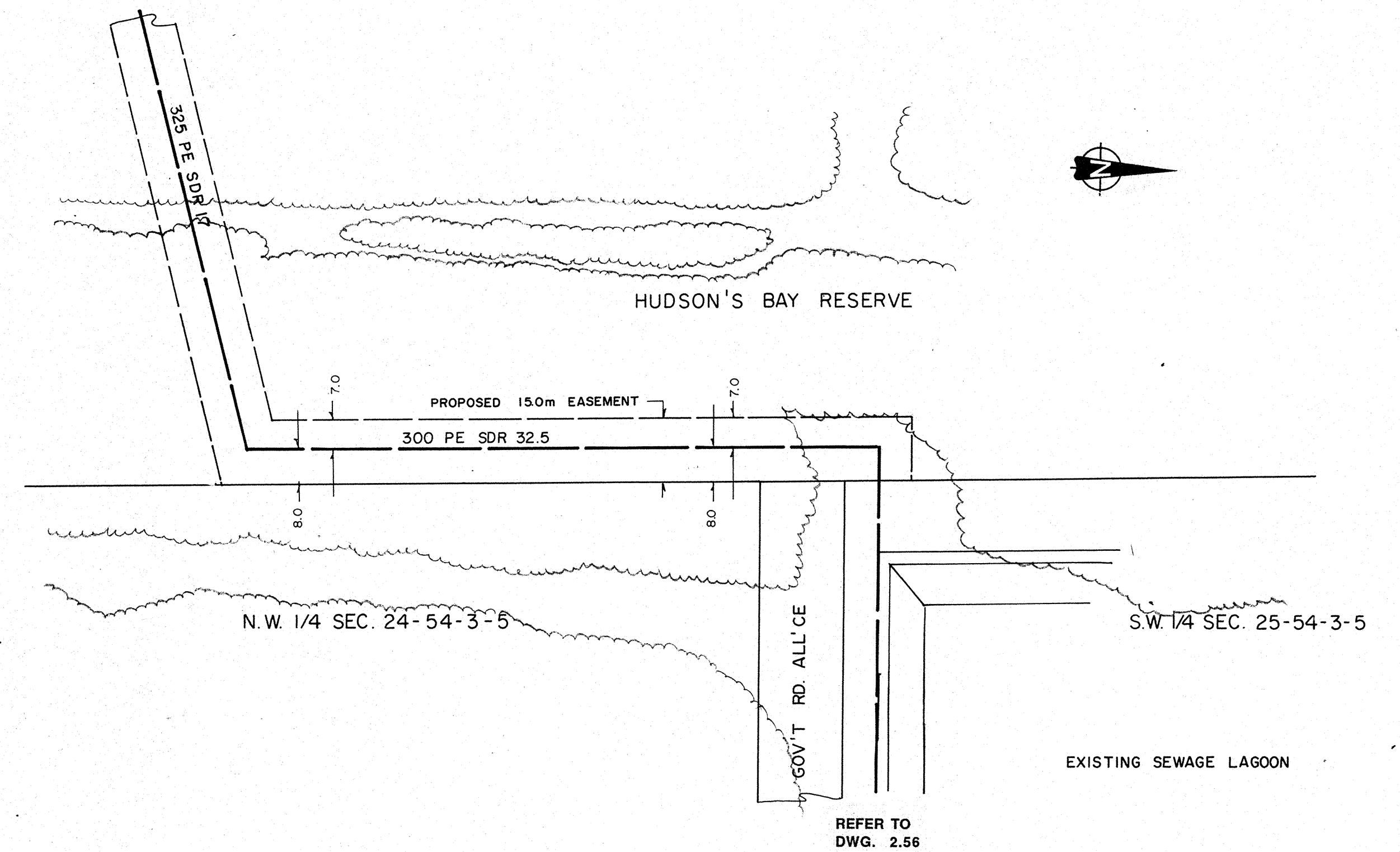
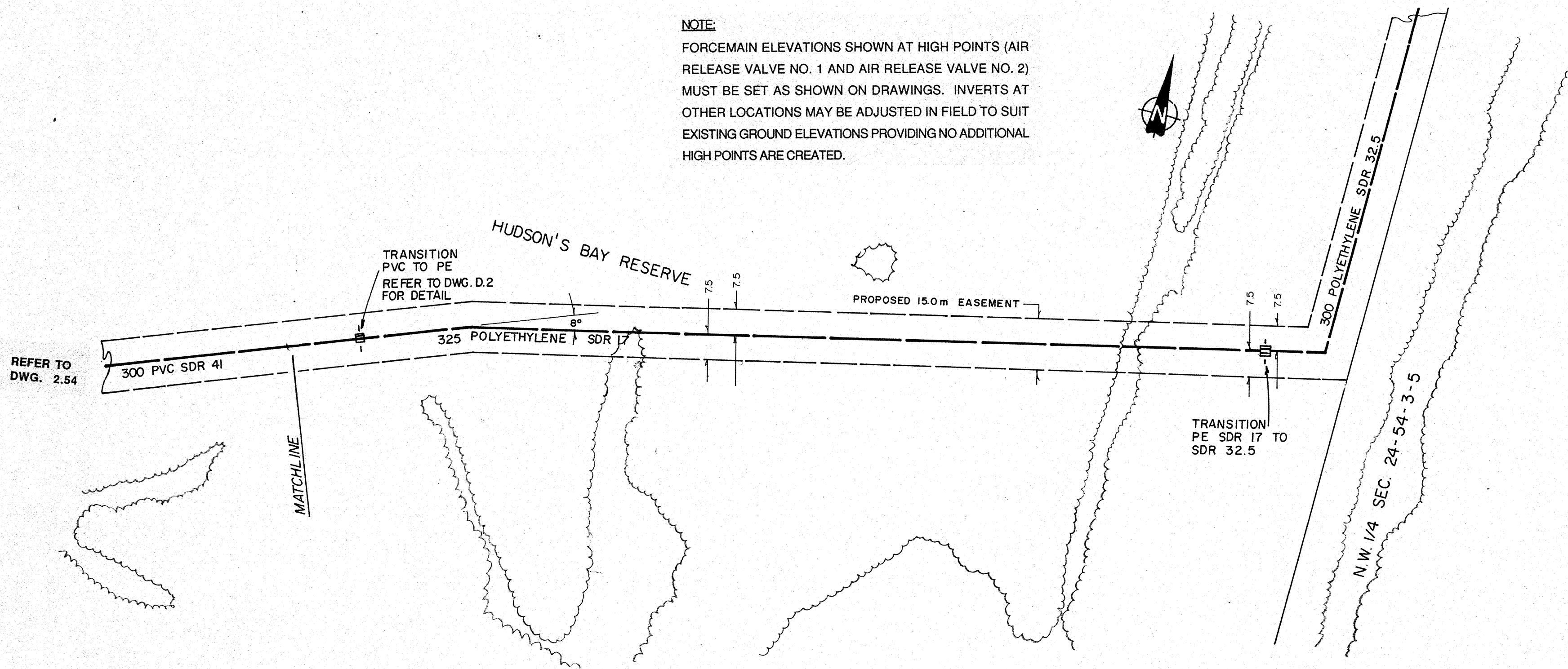


NOTE:
 FORCEMAIN ELEVATIONS SHOWN AT HIGH POINTS (AIR RELEASE VALVE NO. 1 AND AIR RELEASE VALVE NO. 2) MUST BE SET AS SHOWN ON DRAWINGS. INVERTS AT OTHER LOCATIONS MAY BE ADJUSTED IN FIELD TO SUIT EXISTING GROUND ELEVATIONS PROVIDING NO ADDITIONAL HIGH POINTS ARE CREATED.



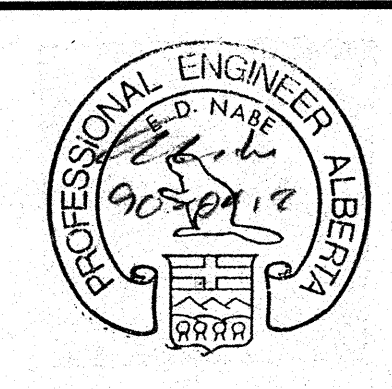
SIEMENS
 SIEMENS ENGINEERING SERVICES LTD.
AS-BUILT
 DATE: 91-04-08
 REVIEWED BY: [Signature]

- NOTES:**
1. LOCATION OF EXISTING UTILITIES ARE APPROXIMATE ONLY (A.G.T., GAS, ETC.)
 2. UTILITIES MAY EXIST WHICH ARE NOT SHOWN ON THIS DRAWING.
 3. CONTRACTOR IS RESPONSIBLE FOR GETTING UTILITY COMPANIES TO MARK OUT ALL THEIR LINES (MAINS AND SERVICES).
 4. CONTRACTOR IS RESPONSIBLE FOR ANY DAMAGE TO EXISTING UTILITIES WHETHER SHOWN ON THIS DRAWING OR NOT.

LEGEND

○ MHI	GRAVITY SEWER, MANHOLE, INVERT, AND DIRECTION OF FLOW	○	TEST HOLE OR BORE HOLE
—	FORCEMAIN (300 DIA.)	□	AIR PEDISTAL
---	EXISTING GROUND PROFILE AT CONSTRUCTION SITE	—	CSP CULVERT W/DIA.
---	EXISTING PROPERTY LINE PROFILE, AT RIGHT	—	CONC. CULVERT W/DIA.
---	EXISTING PROPERTY LINE PROFILE, AT LEFT	—	FENCE W/F WIRE, CLF-CHAIN LINK, BF-BOARD, RF-RAIL, GR-GUARDRAIL, SF-SNOW]
---	EXISTING DITCH AT RIGHT OF ROAD	△	GAS REGULATOR STATION
---	EXISTING DITCH AT LEFT OF ROAD	△	CATCH BASIN
○	FOUND LEGAL MARKER	—	POWER LINE
○	POWER POLE W/ GUY	—	▼ SERVICE CONNECTION
○	GUY POLE, SERVICE OR LIGHT STANDARD POLE	—	—
+	HAND PUMP	—	—
		—	—
		—	—

PERMIT TO PRACTICE
 SIEMENS ENGINEERING SERVICES LTD.
 Signature: [Signature]
 Date: 90-04-12
PERMIT NUMBER: P 2998
 The Association of Professional Engineers, Geologists and Geophysicists of Alberta



No.	DATE	DESCRIPTION	BY	APP
1	11/90	AS BUILT	DF	PM
REVISIONS				

SCALE HORIZ. VERT.	20m 10 0 10m 2.0m 1.0 0 1.0m	PROJECT No. 60-89-1
DESIGNED BY EDN	DRAWN BY DFF	
CHECKED BY	DATE MAR., 1990	

SIEMENS
 SIEMENS ENGINEERING SERVICES LTD.
 CIVIL & MUNICIPAL ENGINEERS
 DEVELOPMENT CONSULTANTS • PLANNERS

TRI-VILLAGE REGIONAL SEWAGE COMMISSION
 SUMMER VILLAGE OF ALBERTA BEACH
 SEWAGE COLLECTION SYSTEM
 FORCEMAIN
 EASTERLY TOWARDS EXISTING LAGOON
 SHEET OF DWG. No. 2.55