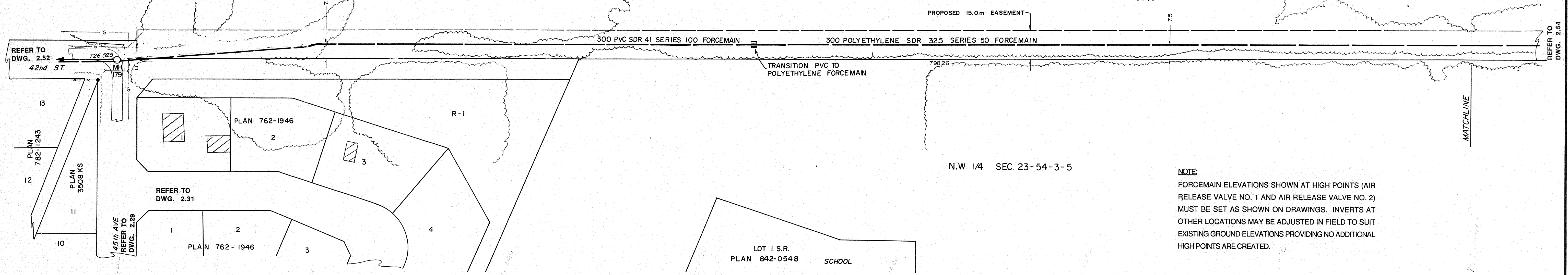
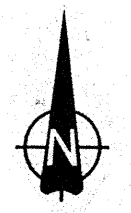
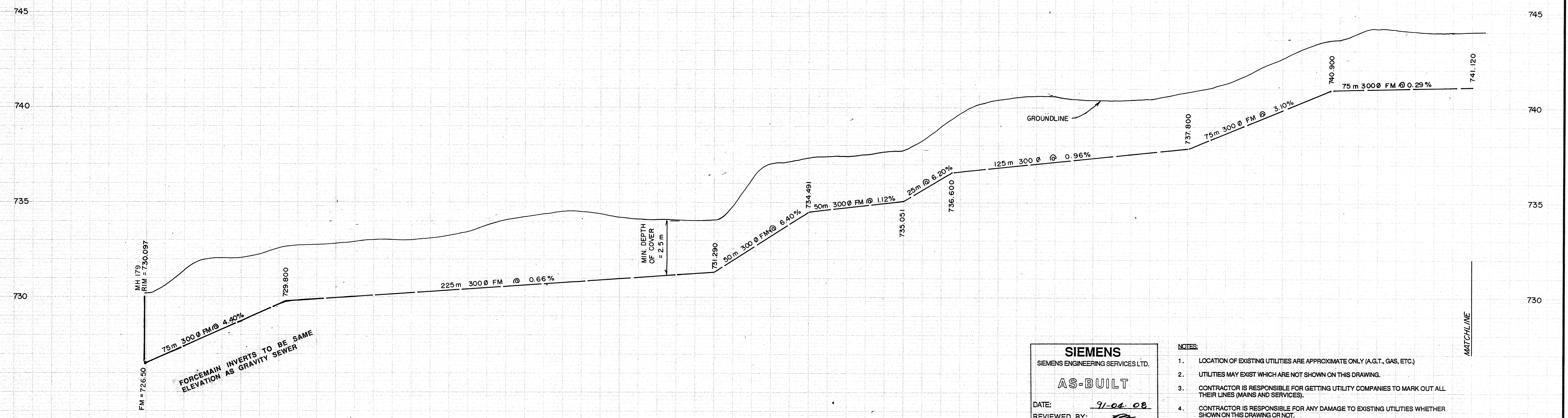


HUDSON'S BAY RESERVE



**NOTE:**  
 FORCEMAIN ELEVATIONS SHOWN AT HIGH POINTS (AIR RELEASE VALVE NO. 1 AND AIR RELEASE VALVE NO. 2) MUST BE SET AS SHOWN ON DRAWINGS. INVERTS AT OTHER LOCATIONS MAY BE ADJUSTED IN FIELD TO SUIT EXISTING GROUND ELEVATIONS PROVIDING NO ADDITIONAL HIGH POINTS ARE CREATED.



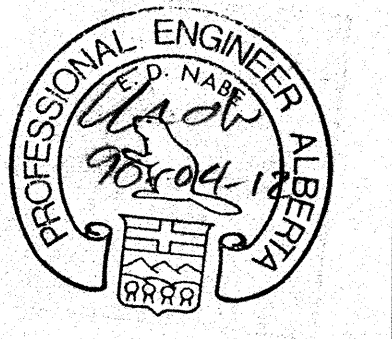
**SIEMENS**  
 SIEMENS ENGINEERING SERVICES LTD.  
**AS-BUILT**  
 DATE: 9-04-08  
 REVIEWED BY: [Signature]

- NOTES:**
1. LOCATION OF EXISTING UTILITIES ARE APPROXIMATE ONLY (A.G.T., GAS, ETC.)
  2. UTILITIES MAY EXIST WHICH ARE NOT SHOWN ON THIS DRAWING.
  3. CONTRACTOR IS RESPONSIBLE FOR GETTING UTILITY COMPANIES TO MARK OUT ALL THEIR LINES (MAINS AND SERVICES).
  4. CONTRACTOR IS RESPONSIBLE FOR ANY DAMAGE TO EXISTING UTILITIES WHETHER SHOWN ON THIS DRAWING OR NOT.

**LEGEND**

—○—	GRAVITY SEWER, MANHOLE INVERT, AND DIRECTION OF FLOW	⊗	TEST HOLE OR BORE HOLE
—○—	FORCEMAIN (300 DIA.)	□	AGT PEDESTAL
---	EXISTING GROUND PROFILE AT CONSTRUCTION SITE	—	CSP CULVERT W/DIA.
---	EXISTING PROPERTY LINE PROFILE, AT RIGHT	—	CONC. CULVERT W/DIA.
---	EXISTING PROPERTY LINE PROFILE, AT LEFT	—	FENCE (WF-WIRE, CLF-CHAIN LINK, BF-BOARD, RF-RAIL, GR-GUARDRAIL, SF-SNOW)
---	EXISTING DITCH AT RIGHT OF ROAD	—	GAS REGULATOR STATION
---	EXISTING DITCH AT LEFT OF ROAD	△	CATCH BASIN
◆	FOUND LEGAL MARKER	—	POWER LINE
○	POWER POLE W/ GUY	—	GAS LINE
○	GUY POLE, SERVICE OR LIGHT STANDARD POLE	—	TELEPHONE LINE
⊕	HAND PUMP	▼	SERVICE CONNECTION

**PERMIT TO PRACTICE**  
 SIEMENS ENGINEERING SERVICES LTD.  
 Signature: [Signature]  
 Date: 9-04-08  
**PERMIT NUMBER: P 2998**  
 The Association of Professional Engineers, Geologists and Geophysicists of Alberta



No.	DATE	DESCRIPTION	BY	APP
1	11/90	AS BUILT	DF	PM
REVISIONS				

SCALE  
 HORIZ. 1:200  
 VERT. 1:10  
 DESIGNED BY EDN  
 CHECKED BY [Signature]

PROJECT No. 60-89-1  
 DRAWN BY DFF  
 DATE MAR., 1990

**SIEMENS**  
 SIEMENS ENGINEERING SERVICES LTD.  
 CIVIL & MUNICIPAL ENGINEERS  
 DEVELOPMENT CONSULTANTS • PLANNERS

**TRI-VILLAGE REGIONAL SEWAGE COMMISSION**  
**SUMMER VILLAGE OF ALBERTA BEACH SEWAGE COLLECTION SYSTEM**  
 FORCEMAIN AT 42nd STREET  
 45th AVE. EASTERLY TOWARDS EXISTING LAGOON  
 SHEET OF DWG. No. 2.53