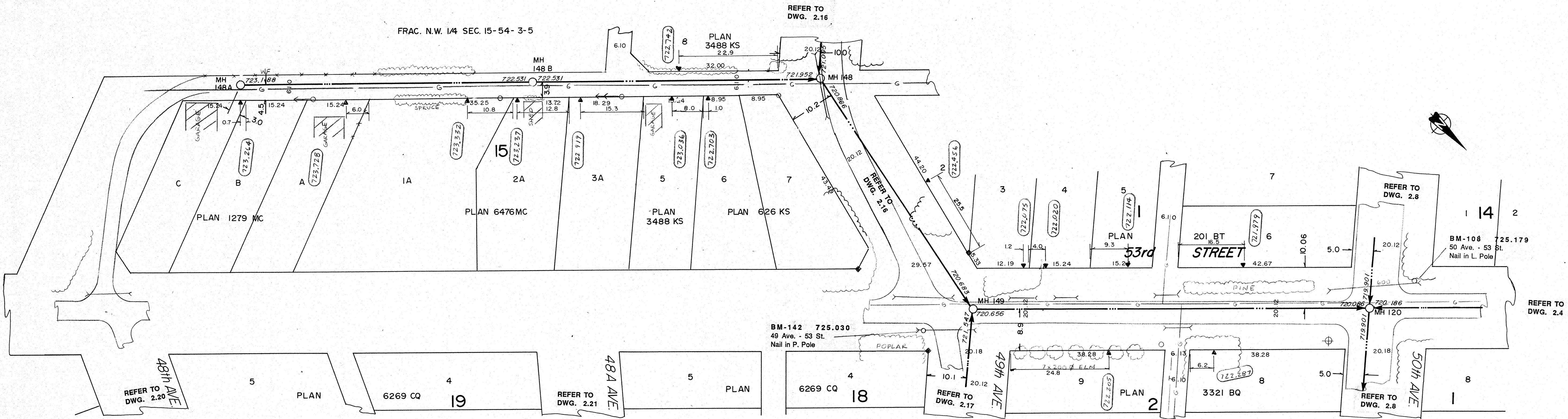


FRAC. N.W. 1/4 SEC. 15-54-3-5



SIEMENS
SIEMENS ENGINEERING SERVICES LTD.
AS-BUILT
DATE: 91-04-08
REVIEWED BY: [Signature]

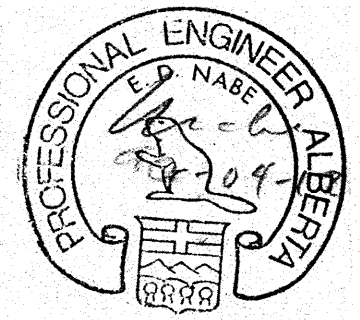
NOTES:

1. LOCATION OF EXISTING UTILITIES ARE APPROXIMATE ONLY (A.G.T., GAS, ETC.)
2. UTILITIES MAY EXIST WHICH ARE NOT SHOWN ON THIS DRAWING.
3. CONTRACTOR IS RESPONSIBLE FOR GETTING UTILITY COMPANIES TO MARK OUT ALL THEIR LINES (MAINS AND SERVICES).
4. CONTRACTOR IS RESPONSIBLE FOR ANY DAMAGE TO EXISTING UTILITIES WHETHER SHOWN ON THIS DRAWING OR NOT.

LEGEND

—○—	GRAVITY SEWER, MAN-HOLE, INVERT, AND DIRECTION OF FLOW	⊗	TEST HOLE OR BORE HOLE
—	FORCEMAIN	□	AGT PEDESTAL
---	EXISTING GROUND PROFILE AT CONSTRUCTION SITE	—	CSP CULVERT W/DIA.
---	EXISTING PROPERTY LINE PROFILE, AT RIGHT	—	CONC. CULVERT W/DIA.
---	EXISTING PROPERTY LINE PROFILE, AT LEFT	—	FENCE (WF-WIRE, CLF-CHAIN LINK, BF-BOARD, RF-RAIL, GR-GUARDRAIL, SF-SNOW)
---	EXISTING DITCH AT RIGHT OF ROAD	—	GAS REGULATOR STATION
---	EXISTING DITCH AT LEFT OF ROAD	△	CATCH BASIN
◆	FOUND LEGAL MARKER	○	POWER LINE
—	POWER POLE W/ GUY	—	GAS LINE
○	GUY POLE, SERVICE OR LIGHT STANDARD POLE	—	TELEPHONE LINE
+	HAND PUMP	▽	SERVICE CONNECTION

PERMIT TO PRACTICE
SIEMENS ENGINEERING SERVICES LTD.
Signature: [Signature]
Date: 91-04-12
PERMIT NUMBER: P 2998
The Association of Professional Engineers, Geologists and Geophysicists of Alberta



No.	DATE	DESCRIPTION	BY	APP
3	05/92	REVISED AS BUILT	DF	PM
2	11/90	AS BUILT	DF	PM
1	1990 05 23	ADDITIONAL MANHOLE	DF	EN

REVISIONS

SCALE
HORIZ. 10m 5 0 5
VERT. 1.0m 0.5 0 0.5

DESIGNED BY: EDN
CHECKED BY: [Signature]

PROJECT No. 60-89-1
DRAWN BY: DFF
DATE: MAR., 1990

SIEMENS
SIEMENS ENGINEERING SERVICES LTD.
CIVIL & MUNICIPAL ENGINEERS
DEVELOPMENT CONSULTANTS • PLANNERS

TRI-VILLAGE REGIONAL SEWAGE COMMISSION
SUMMER VILLAGE OF ALBERTA BEACH
SEWAGE COLLECTION SYSTEM
53rd STREET AND NORTH LANE
48th AVE. TO 50th AVE.
SHEET OF DWG. No. 2.38