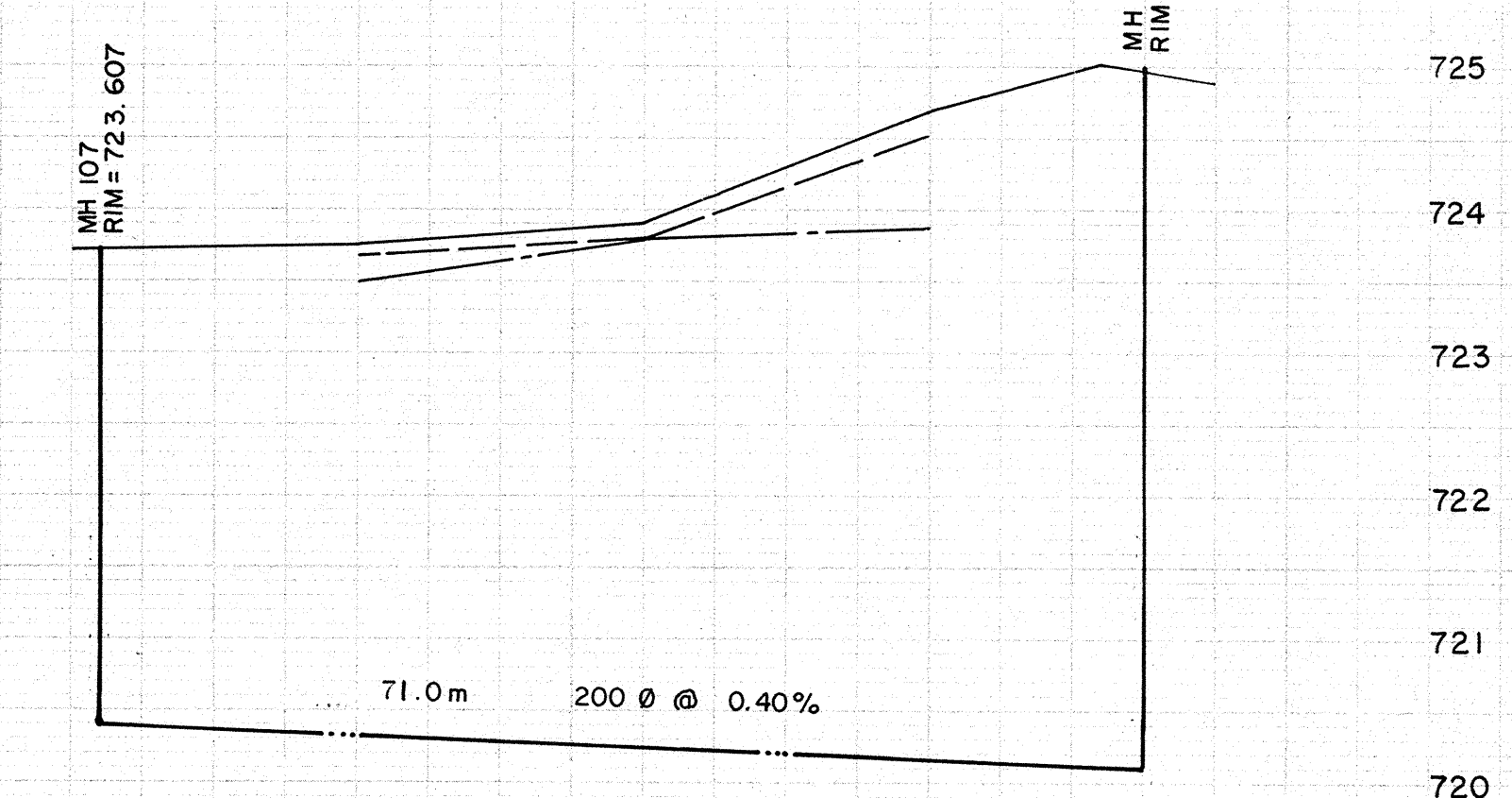
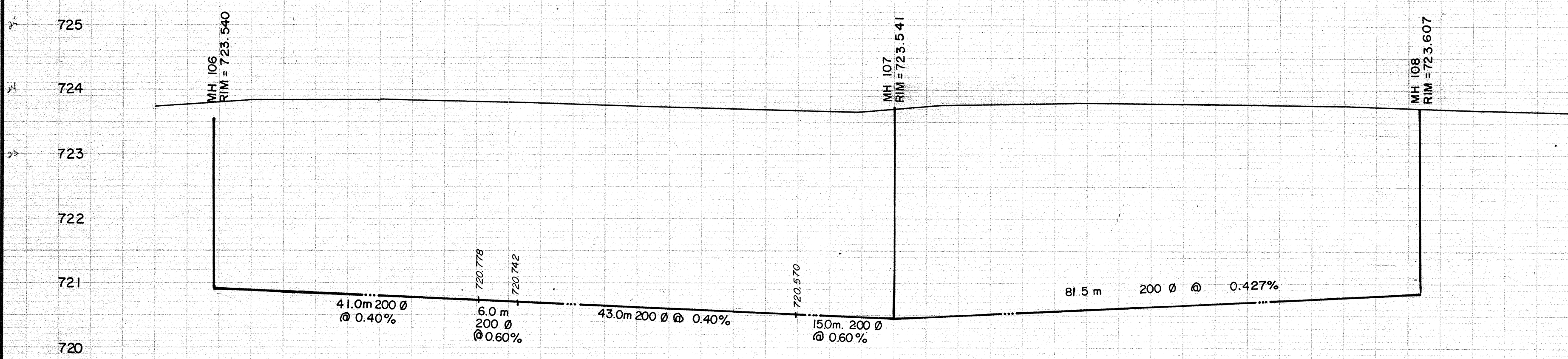
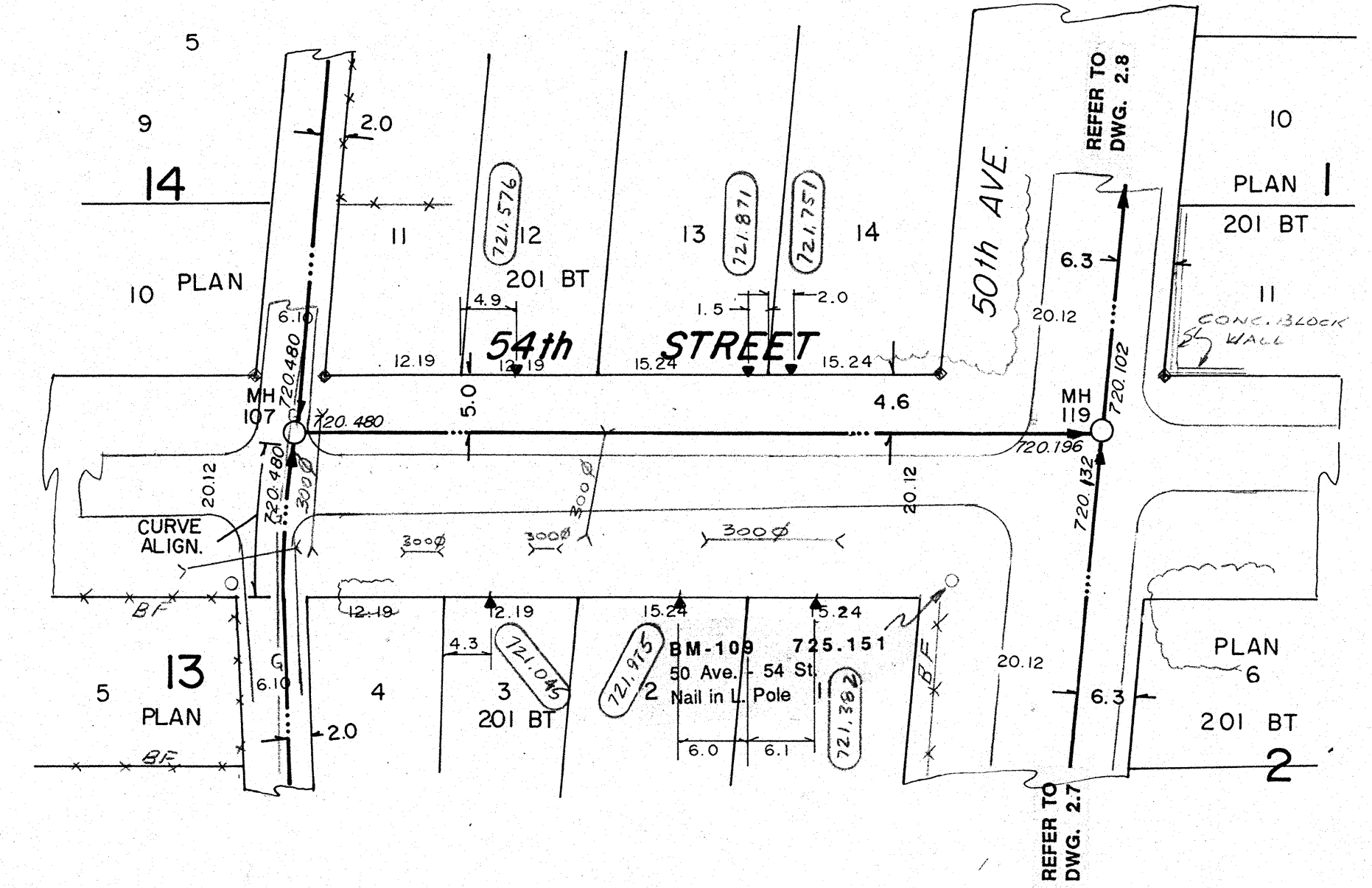
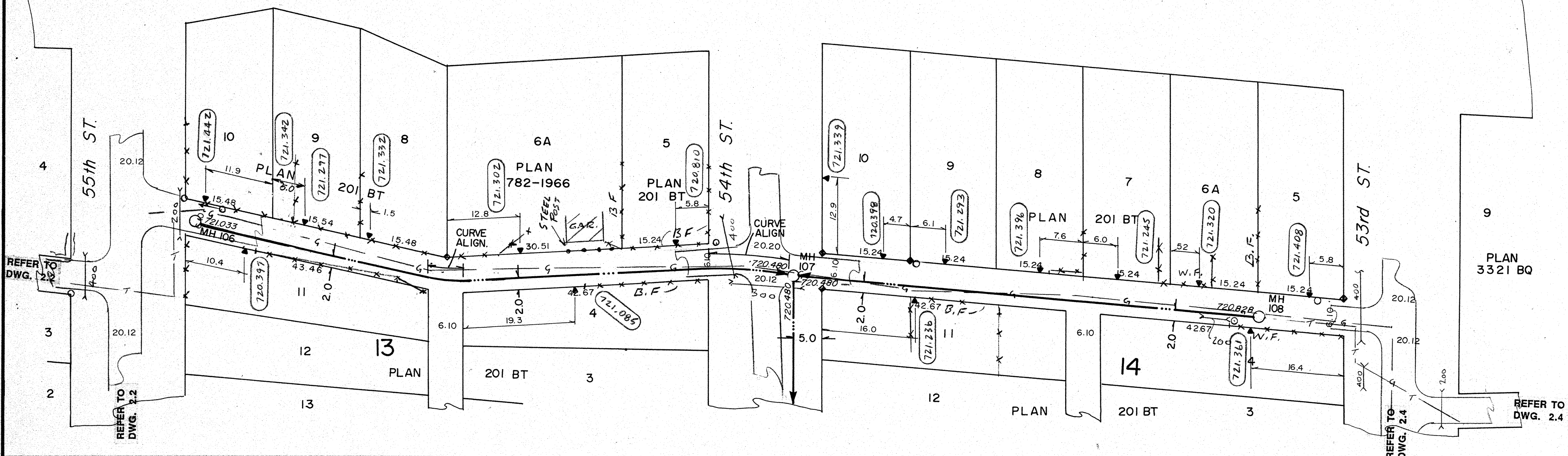


Lac Ste. Anne

51st AVE.



NOTES:

1. LOCATION OF EXISTING UTILITIES ARE APPROXIMATE ONLY (A.G.T., GAS, ETC.)
2. UTILITIES MAY EXIST WHICH ARE NOT SHOWN ON THIS DRAWING.
3. CONTRACTOR IS RESPONSIBLE FOR GETTING UTILITY COMPANIES TO MARK OUT ALL THEIR LINES (MANS AND SERVICES).
4. CONTRACTOR IS RESPONSIBLE FOR ANY DAMAGE TO EXISTING UTILITIES WHETHER SHOWN ON THIS DRAWING OR NOT.

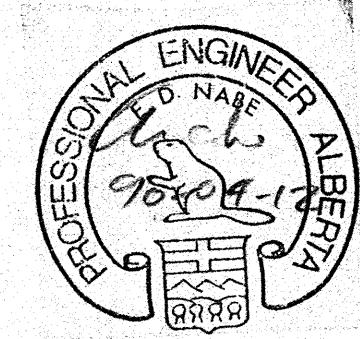
SIEMENS
SIEMENS ENGINEERING SERVICES LTD.

AS-BUILT

DATE: 91-04-08
REVIEWED BY: [Signature]

LEGEND	
○	GRAVITY SEWER, MAN-HOLE, INVERT, AND DIRECTION OF FLOW
—	FORCEMAIN
—	EXISTING GROUND PROFILE AT CONSTRUCTION SITE
—	EXISTING PROPERTY LINE PROFILE, AT RIGHT
—	EXISTING PROPERTY LINE PROFILE, AT LEFT
—	EXISTING DITCH AT RIGHT OF ROAD
—	EXISTING DITCH AT LEFT OF ROAD
◆	FOUND LEGAL MARKER
—	POWER POLE W/ GUY
○	GUY POLE, SERVICE OR LIGHT STANDARD POLE
+	HAND PUMP
⊗	TEST HOLE OR BORE HOLE
□	AGT PEDESTAL
—	CSP CULVERT W/DIA.
—	CONC. CULVERT W/DIA.
—	FENCE (W/F-WIRE, CLF-CHAIN LINK, BF-BOARD, RF-RAIL, GR-GUARDRAIL, SF-SNOW)
⊕	GAS REGULATOR STATION
○	CATCH BASIN
—	POWER LINE
—	GAS LINE
—	TELEPHONE LINE
▽	SERVICE CONNECTION

PERMIT TO PRACTICE
SIEMENS ENGINEERING SERVICES LTD.
Signature: [Signature]
Date: 90-04-12
PERMIT NUMBER: P 2398
The Association of Professional Engineers,
Geologists and Geophysicists of Alberta



No.	DATE	DESCRIPTION	BY	APP
2	11/90	AS BUILT	DF	PM
1	1990 05 23	GRADE CHANGE	DF	EN

SCALE
HORIZ. 1:100
VERT. 1:10

DESIGNED BY EDN
CHECKED BY [Signature]

PROJECT No. 60-89-1
DRAWN BY DFF YJC
DATE MAR., 1990

SIEMENS
SIEMENS ENGINEERING SERVICES LTD.
CIVIL & MUNICIPAL ENGINEERS
DEVELOPMENT CONSULTANTS • PLANNERS

TRI-VILLAGE REGIONAL SEWAGE COMMISSION
SUMMER VILLAGE OF ALBERTA BEACH
SEWAGE COLLECTION SYSTEM
51st AVENUE (LANE)
55th ST. to 53rd ST.
54th STREET
SOUTHERLY to 50th AVENUE
SHEET OF DWG. No. 2.3