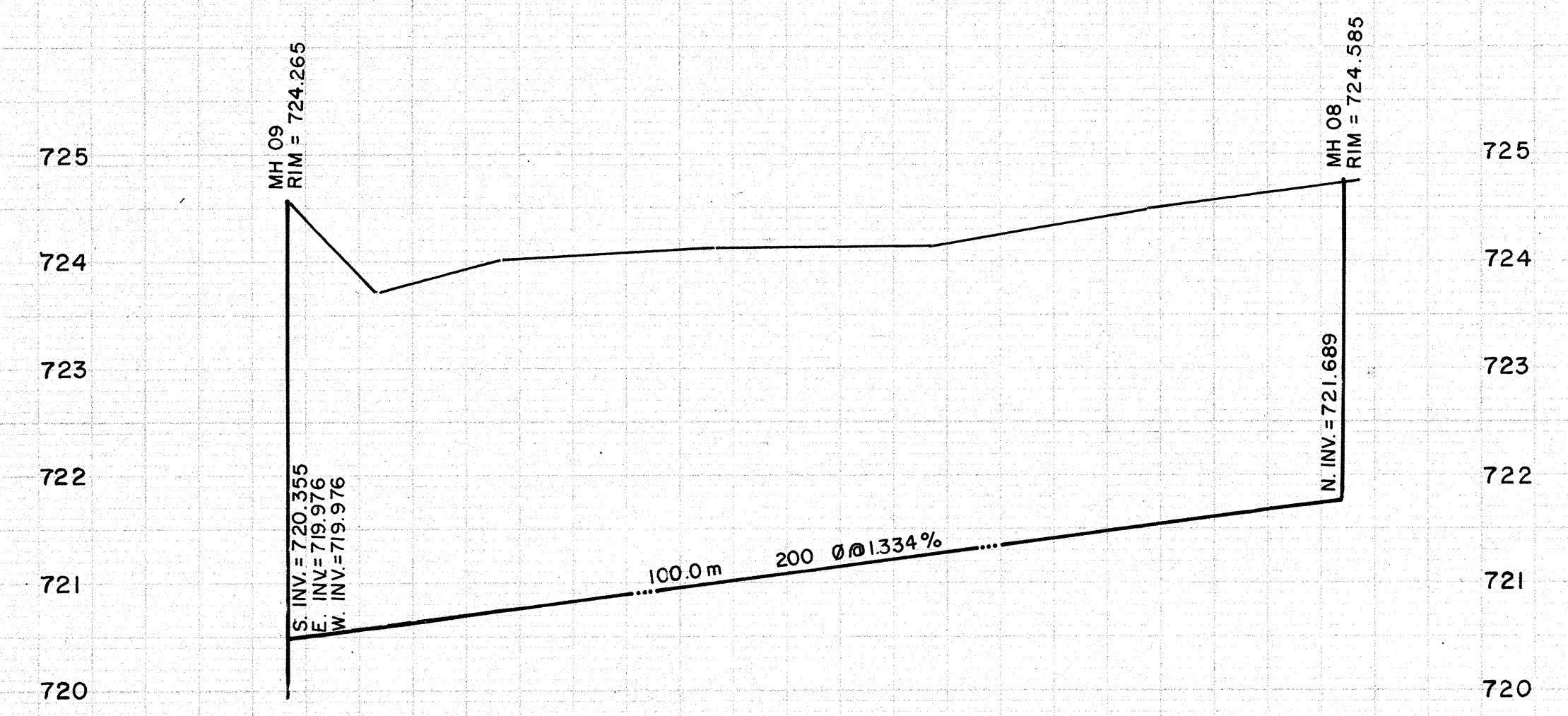
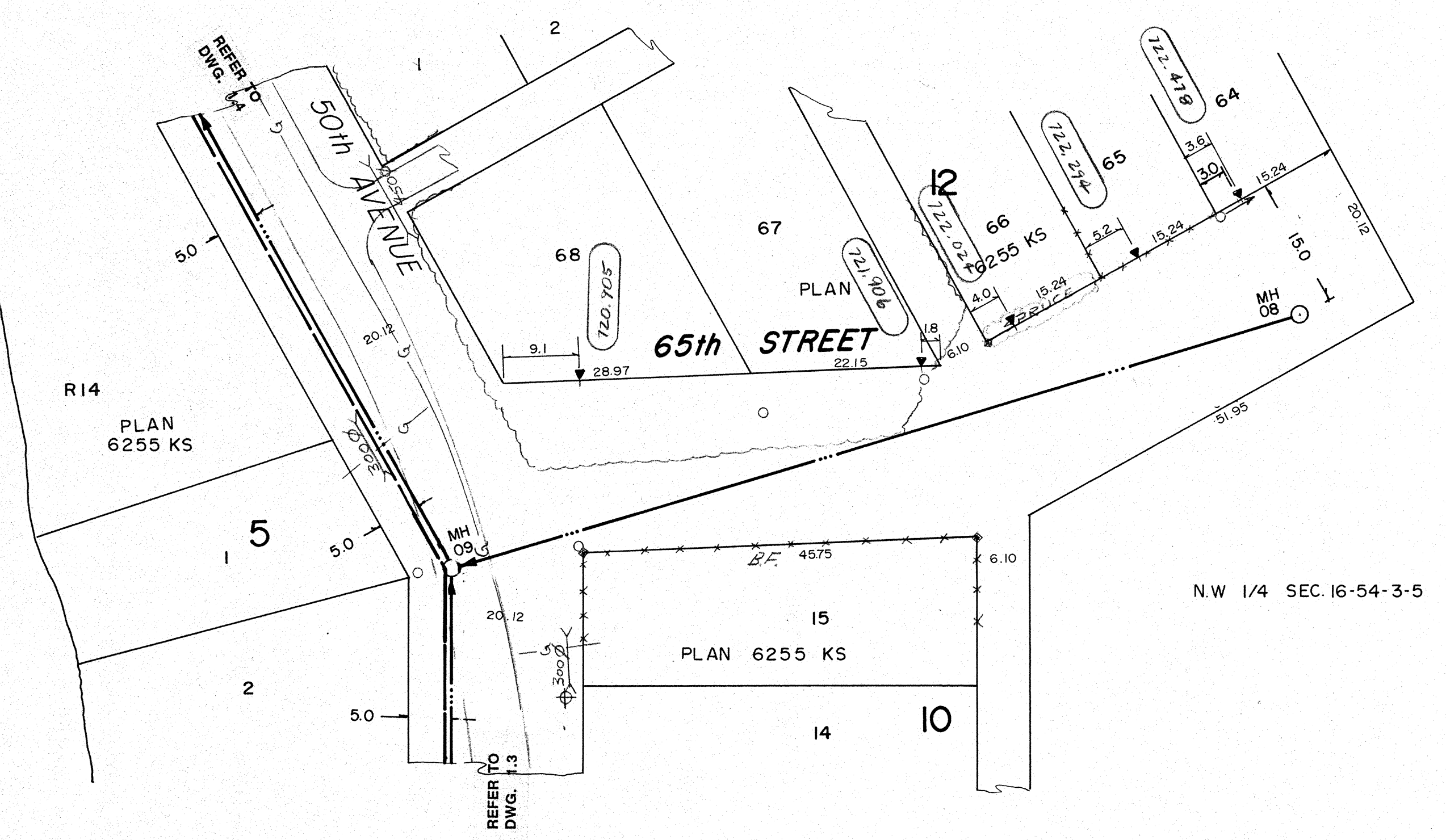




Lac Ste. Anne



- NOTES:**
1. LOCATION OF EXISTING UTILITIES ARE APPROXIMATE ONLY (A.G.T., GAS, ETC.)
 2. UTILITIES MAY EXIST WHICH ARE NOT SHOWN ON THIS DRAWING.
 3. CONTRACTOR IS RESPONSIBLE FOR GETTING UTILITY COMPANIES TO MARK OUT ALL THEIR LINES (MANS AND SERVICES).
 4. CONTRACTOR IS RESPONSIBLE FOR ANY DAMAGE TO EXISTING UTILITIES WHETHER SHOWN ON THIS DRAWING OR NOT.

SIEMENS
SIEMENS ENGINEERING SERVICES LTD.

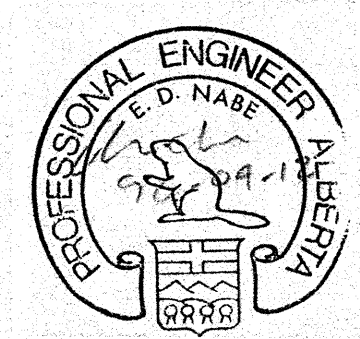
AS-BUILT

DATE: 9.02.08
REVIEWED BY: [Signature]

LEGEND	
	GRAVITY SEWER, MANHOLE, INVERT, AND DIRECTION OF FLOW
	FORCE MAIN (100 DIA.)
	EXISTING GROUND PROFILE AT CONSTRUCTION SITE
	EXISTING PROPERTY LINE PROFILE, AT RIGHT
	EXISTING PROPERTY LINE PROFILE, AT LEFT
	EXISTING DITCH AT RIGHT OF ROAD
	EXISTING DITCH AT LEFT OF ROAD
	FOUND LEGAL MARKER
	POWER POLE W/GUY
	GUY POLE, SERVICE OR LIGHT STANDARD POLE
	HAND PUMP
	TEST HOLE OR BOREHOLE
	ACP PEDESTAL
	CSP CULVERT WIDTH
	CONC. CULVERT WIDTH
	FENCE (W/F-WIRE, C/LF-CHAIN LINK, B/F-BOARD, R/R-RAIL, G/R-GUARDRAIL, S/F-SNOW)
	GAS REGULATOR STATION
	CATCH BASIN
	POWER LINE
	GAS LINE
	TELEPHONE LINE
	SERVICE CONNECTION

PERMIT TO PRACTICE
SIEMENS ENGINEERING SERVICES LTD.

Signature: [Signature]
Date: 09-02-17
PERMIT NUMBER: P 2398
The Association of Professional Engineers,
Geologists and Geophysicists of Alberta



No.	DATE	DESCRIPTION	BY	APP
1	11/90	AS BUILT	DF	PM
REVISIONS				

SCALE HORIZ. 1:100 VERT. 1:10	PROJECT No. 60-89-1
DESIGNED BY EDN	DRAWN BY DFF/TG
CHECKED BY [Signature]	DATE MAR., 1990

SIEMENS

SIEMENS ENGINEERING SERVICES LTD.

CIVIL & MUNICIPAL ENGINEERS
DEVELOPMENT CONSULTANTS • PLANNERS

TRI-VILLAGE REGIONAL SEWAGE COMMISSION

SUMMER VILLAGE OF VAL QUENTIN
SEWAGE COLLECTION SYSTEM

65th STREET

SHEET OF DWG. No. 1.9