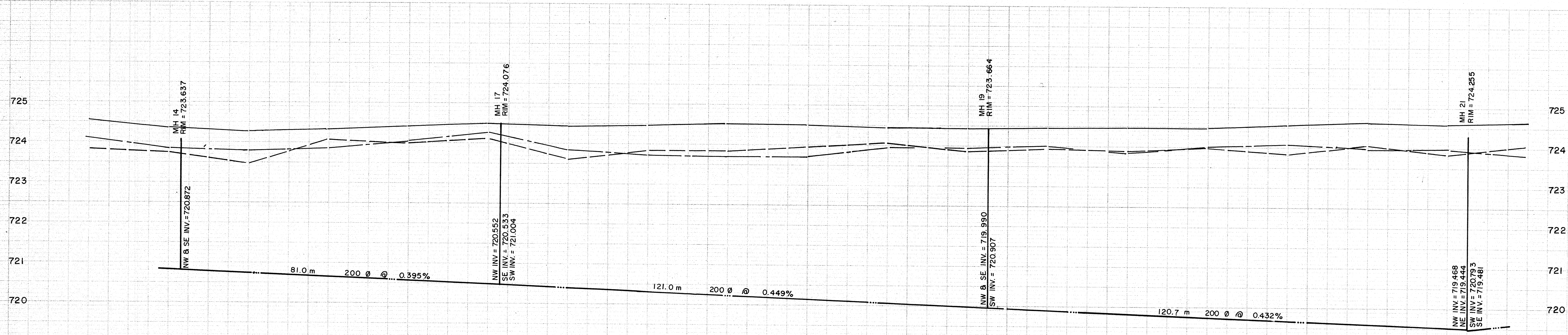
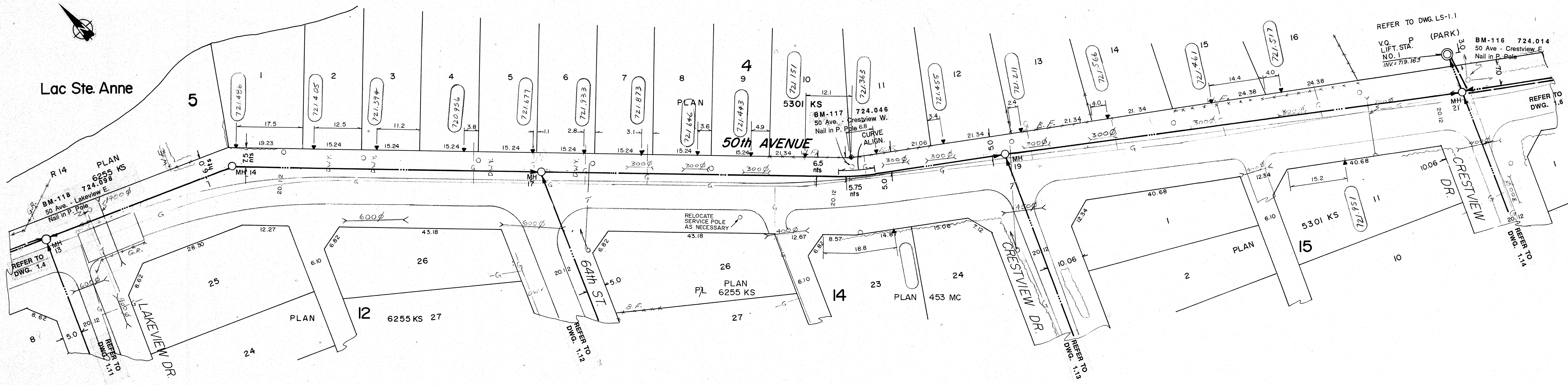


Lac Ste Anne



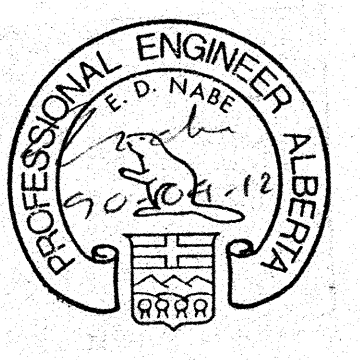
- NOTES:
1. LOCATION OF EXISTING UTILITIES ARE APPROXIMATE ONLY (A.G.T., GAS, ETC.)
 2. UTILITIES MAY EXIST WHICH ARE NOT SHOWN ON THIS DRAWING.
 3. CONTRACTOR IS RESPONSIBLE FOR GETTING UTILITY COMPANIES TO MARK OUT ALL THEIR LINES (MAINS AND SERVICES).
 4. CONTRACTOR IS RESPONSIBLE FOR ANY DAMAGE TO EXISTING UTILITIES WHETHER SHOWN ON THIS DRAWING OR NOT.

SIEMENS
SIEMENS ENGINEERING SERVICES LTD.
AS-BUILT
DATE: 91-04-08
REVIEWED BY: [Signature]

LEGEND

○	GRAVITY SEWER, MANHOLE, INVERT, AND DIRECTION OF FLOW	⊗	TEST HOLE OR BORE HOLE
—	FORCEMAIN (100 DIA.)	□	AGT PEDESTAL
---	EXISTING GROUND PROFILE AT CONSTRUCTION SITE	—	CSP CULVERT WIDIA.
---	EXISTING PROPERTY LINE PROFILE, AT RIGHT	—	CONC. CULVERT WIDIA.
---	EXISTING PROPERTY LINE PROFILE, AT LEFT	—	FENCE (W/F-WIRE, CLF-CHAIN LINK, BF-BOARD, RF-RAIL, GR-GUARDRAIL, SF-SNOW)
---	EXISTING DITCH AT LEFT OF ROAD	—	GAS REGULATOR STATION
---	EXISTING DITCH AT RIGHT OF ROAD	△	CATCH BASIN
◆	FOUND LEGAL MARKER	—	POWER LINE
○	POWER POLE W/ GUY	—	GAS LINE
○	GUY POLE, SERVICE OR LIGHT STANDARD POLE	—	TELEPHONE LINE
⊕	HAND PUMP	▼	SERVICE CONNECTION

PERMIT TO PRACTICE
SIEMENS ENGINEERING SERVICES LTD.
Signature: [Signature]
Date: 91-04-08
PERMIT NUMBER: P 2998
The Association of Professional Engineers,
Geologists and Geophysicists of Alberta



No.	DATE	DESCRIPTION	BY	APP
I	11/90	AS BUILT	DF	PM
REVISIONS				

SCALE HORIZ. 1:100 VERT. 1:10	PROJECT No. 60-89-1
DESIGNED BY EDN	DRAWN BY DF / TG
CHECKED BY [Signature]	DATE MAR., 1990

SIEMENS
SIEMENS ENGINEERING SERVICES LTD.
CIVIL & MUNICIPAL ENGINEERS
DEVELOPMENT CONSULTANTS • PLANNERS

TRI-VILLAGE REGIONAL SEWAGE COMMISSION
SUMMER VILLAGE OF VAL QUENTIN SEWAGE COLLECTION SYSTEM
50th AVENUE
LAKEVIEW DR. E. to CRESTVIEW DR. E.
SHEET OF DWG. No. 1,5