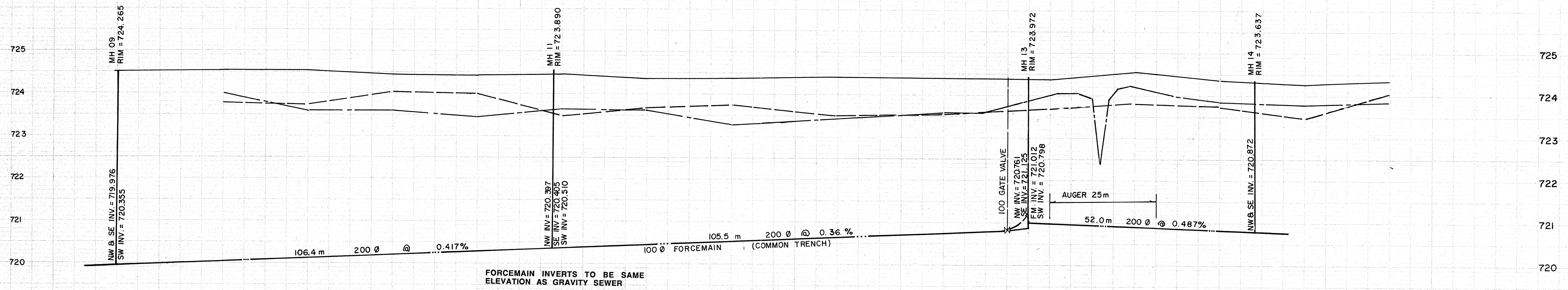
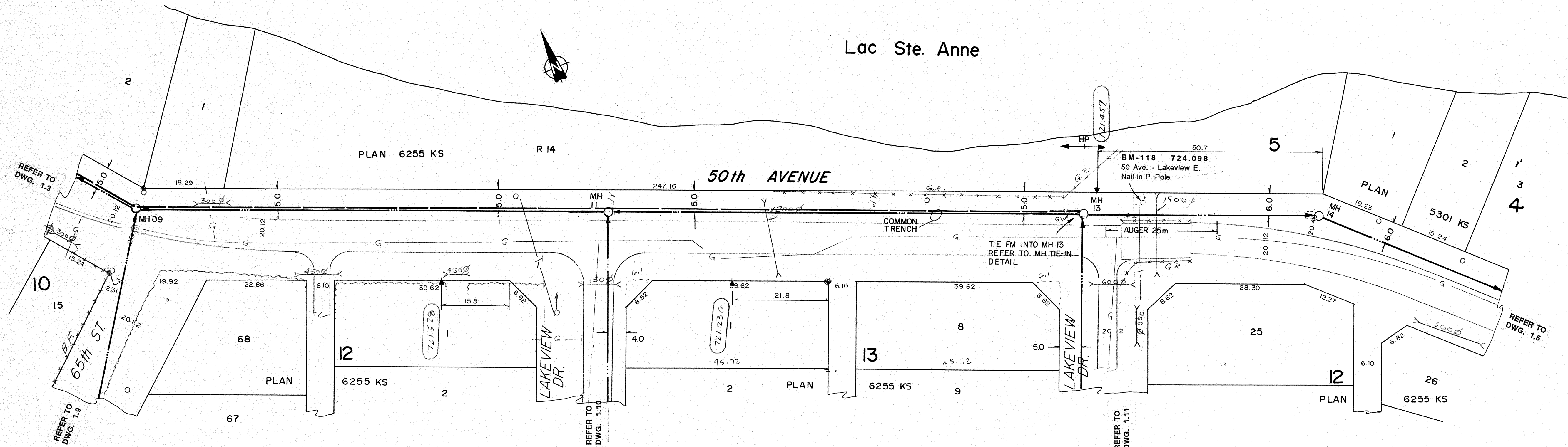


Lac Ste. Anne



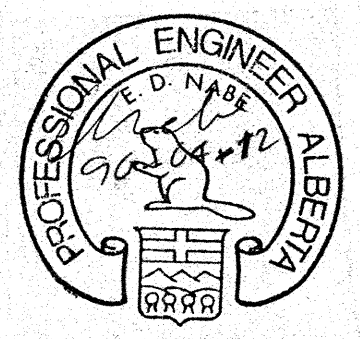
- NOTES:
- LOCATION OF EXISTING UTILITIES ARE APPROXIMATE ONLY (A.G.T., GAS, ETC.)
  - UTILITIES MAY EXIST WHICH ARE NOT SHOWN ON THIS DRAWING.
  - CONTRACTOR IS RESPONSIBLE FOR GETTING UTILITY COMPANIES TO MARK OUT ALL THEIR LINES (MAINS AND SERVICES).
  - CONTRACTOR IS RESPONSIBLE FOR ANY DAMAGE TO EXISTING UTILITIES WHETHER SHOWN ON THIS DRAWING OR NOT.

**SIEMENS**  
SIEMENS ENGINEERING SERVICES LTD.  
**AS-BUILT**  
DATE: 91-04-08  
REVIEWED BY: *[Signature]*

**LEGEND**

- GRAVITY SEWER, MANHOLE, INVERT, AND DIRECTION OF FLOW
- FORCEMAIN (100 DIA.)
- EXISTING GROUND PROFILE AT CONSTRUCTION SITE
- EXISTING PROPERTY LINE PROFILE, AT RIGHT
- EXISTING PROPERTY LINE PROFILE, AT LEFT
- EXISTING DITCH AT RIGHT OF ROAD
- EXISTING DITCH AT LEFT OF ROAD
- ◆ FOUND LEGAL MARKER
- POWER POLE W/ GLY
- GLY POLE, SERVICE OR LIGHT STANDARD POLE
- ⊕ HAND PUMP
- ⊙ TEST HOLE OR BOREHOLE
- AST FERRISAL
- CSP CULVERT W/DIA.
- CONC. CULVERT W/DIA.
- FENCE (W/ WIRE, C/LF-CHAIN LINK, BF-BOARD, RF-RAIL, GR-GUARDRAIL, SF-SNOW)
- △ GAS REGULATOR STATION
- CATCH BASIN
- POWER LINE
- GAS LINE
- TELEPHONE LINE
- ▽ SERVICE CONNECTION

**PERMIT TO PRACTICE**  
SIEMENS ENGINEERING SERVICES LTD.  
Signature: *[Signature]*  
Date: 91-04-12  
**PERMIT NUMBER: P 2998**  
The Association of Professional Engineers,  
Geologists and Geophysicists of Alberta



No.	DATE	DESCRIPTION	BY	APP
1	11/90	AS BUILT	DF	PM
REVISIONS				

SCALE HORIZ. VERT.	PROJECT No. 60-89-1
DESIGNED BY EDN	DRAWN BY DFF/TG
CHECKED BY	DATE MAR., 1990

**SIEMENS**  
SIEMENS ENGINEERING SERVICES LTD.  
CIVIL & MUNICIPAL ENGINEERS  
DEVELOPMENT CONSULTANTS • PLANNERS

TRI-VILLAGE REGIONAL SEWAGE COMMISSION  
SUMMER VILLAGE OF VAL QUENTIN  
SEWAGE COLLECTION SYSTEM  
50th AVENUE  
65th ST. to LAKEVIEW DRIVE E.  
SHEET \_\_\_\_\_ OF \_\_\_\_\_ DWG. No. 1.4