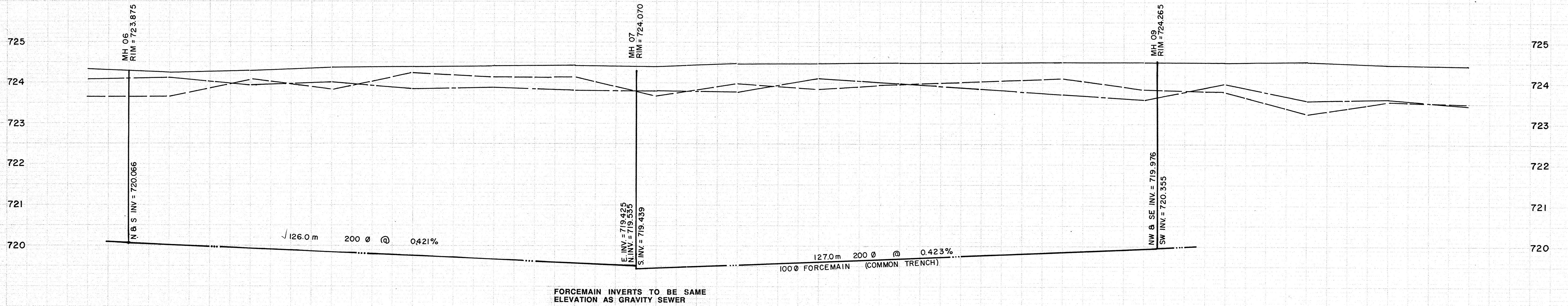
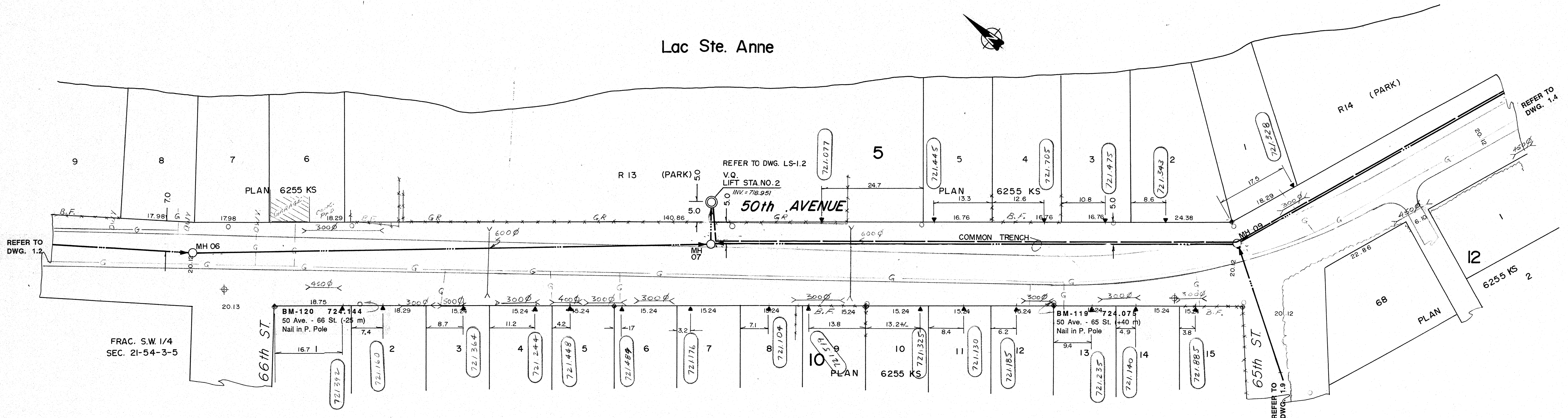


Lac Ste. Anne



FORCEMAIN INVERTS TO BE SAME ELEVATION AS GRAVITY SEWER

NOTES:

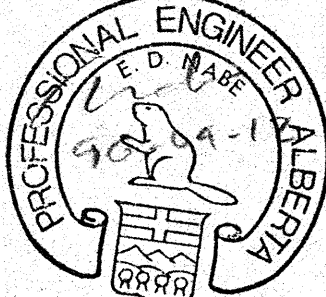
1. LOCATION OF EXISTING UTILITIES ARE APPROXIMATE ONLY (A.G.T., GAS, ETC.)
2. UTILITIES MAY EXIST WHICH ARE NOT SHOWN ON THIS DRAWING.
3. CONTRACTOR'S RESPONSIBLE FOR GETTING UTILITY COMPANIES TO MARK OUT ALL THEIR LINES (MAINS AND SERVICES).
4. CONTRACTOR IS RESPONSIBLE FOR ANY DAMAGE TO EXISTING UTILITIES WHETHER SHOWN ON THIS DRAWING OR NOT.

SIEMENS
SIEMENS ENGINEERING SERVICES LTD.
AS-BUILT
DATE: 91-04-08
REVIEWED BY: *[Signature]*

LEGEND

—○—	GRAVITY SEWER, MANHOLE INVERT, AND DIRECTION OF FLOW	⊗	TEST HOLE OR BORE HOLE
—○—	FORCEMAIN (100 DIA.)	⊠	AGT PEDESTAL
---	EXISTING GROUND PROFILE AT CONSTRUCTION SITE	—	CSP CULVERT WIDIA.
---	EXISTING GROUND PROFILE AT RIGHT	—	CONC. CULVERT WIDIA.
---	EXISTING PROPERTY LINE PROFILE, AT RIGHT	—	FENCE (WF-WIRE, CLF-CHAIN LINK, BF-BOARD, RF-RAIL, GR-GUARDRAIL, SF-SNOW)
---	EXISTING PROPERTY LINE PROFILE, AT LEFT	—	GAS REGULATOR STATION
---	EXISTING DITCH AT RIGHT OF ROAD	△	CATCH BASIN
---	EXISTING DITCH AT LEFT OF ROAD	—	POWER LINE
◆	FOUND LEGAL MARKER	—	GAS LINE
←	POWER POLE W/ GLY	—	TELEPHONE LINE
○	GLY POLE, SERVICE OR LIGHT STANDARD POLE	▼	SERVICE CONNECTION
⊕	HAND PUMP		

PERMIT TO PRACTICE
SIEMENS ENGINEERING SERVICES LTD.
Signature: *[Signature]*
Date: 90-04-12
PERMIT NUMBER: P 2998
The Association of Professional Engineers, Geologists and Geophysicists of Alberta



No.	DATE	DESCRIPTION	BY	APP
1	11/90	AS BUILT	DF	PM
REVISIONS				

SCALE
HORIZ. 1:100
VERT. 1:10
DESIGNED BY: EDN
CHECKED BY: *[Signature]*

PROJECT No. 60-89-1
DRAWN BY: DFF/TG
DATE: MAR., 1990

SIEMENS
SIEMENS ENGINEERING SERVICES LTD.
CIVIL & MUNICIPAL ENGINEERS
DEVELOPMENT CONSULTANTS • PLANNERS

TRI-VILLAGE REGIONAL SEWAGE COMMISSION
SUMMER VILLAGE OF VAL QUENTIN
SEWAGE COLLECTION SYSTEM
50th AVENUE
66th ST. to 65th ST.
SHEET OF DWG. No. 1.3