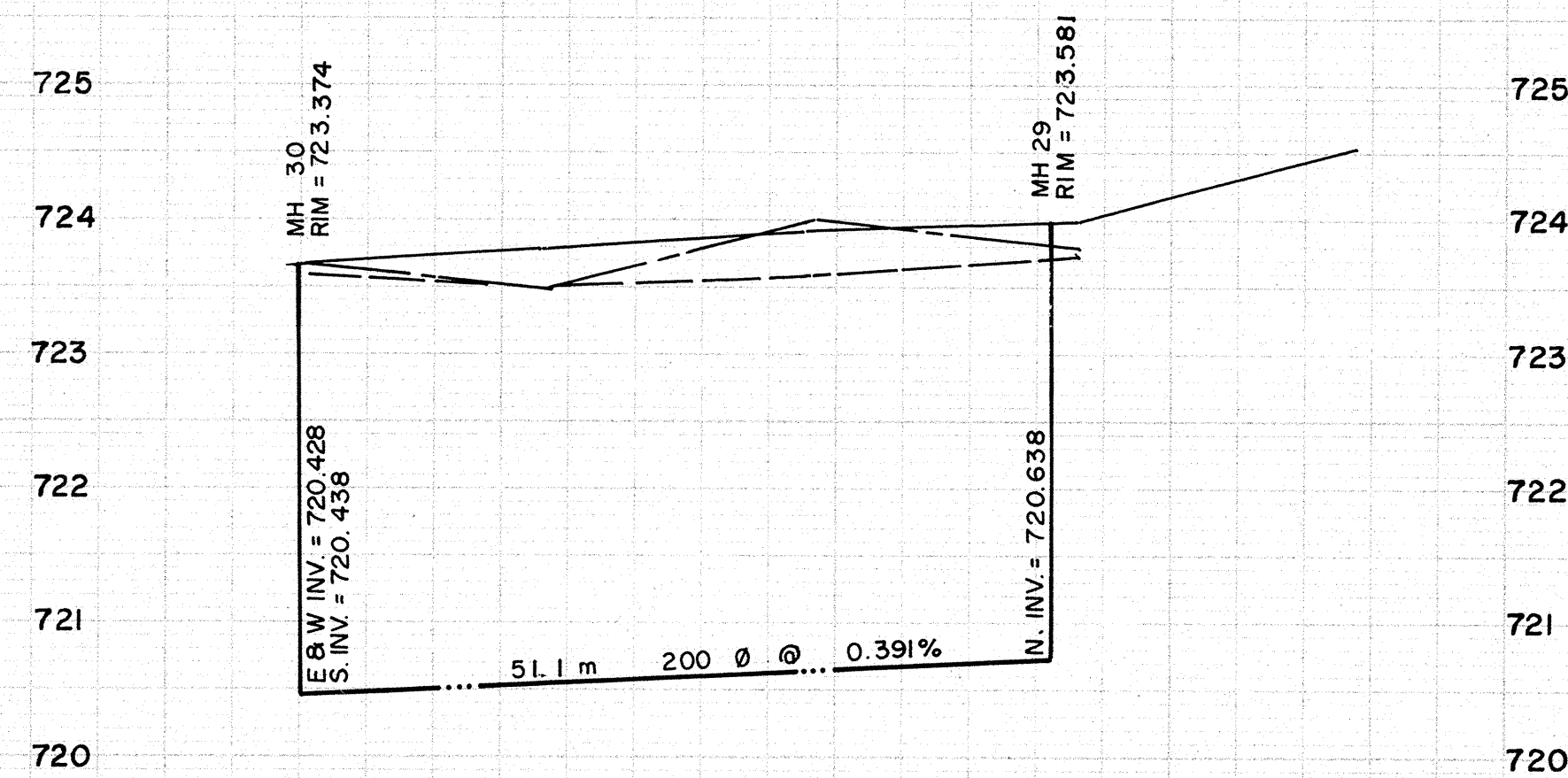
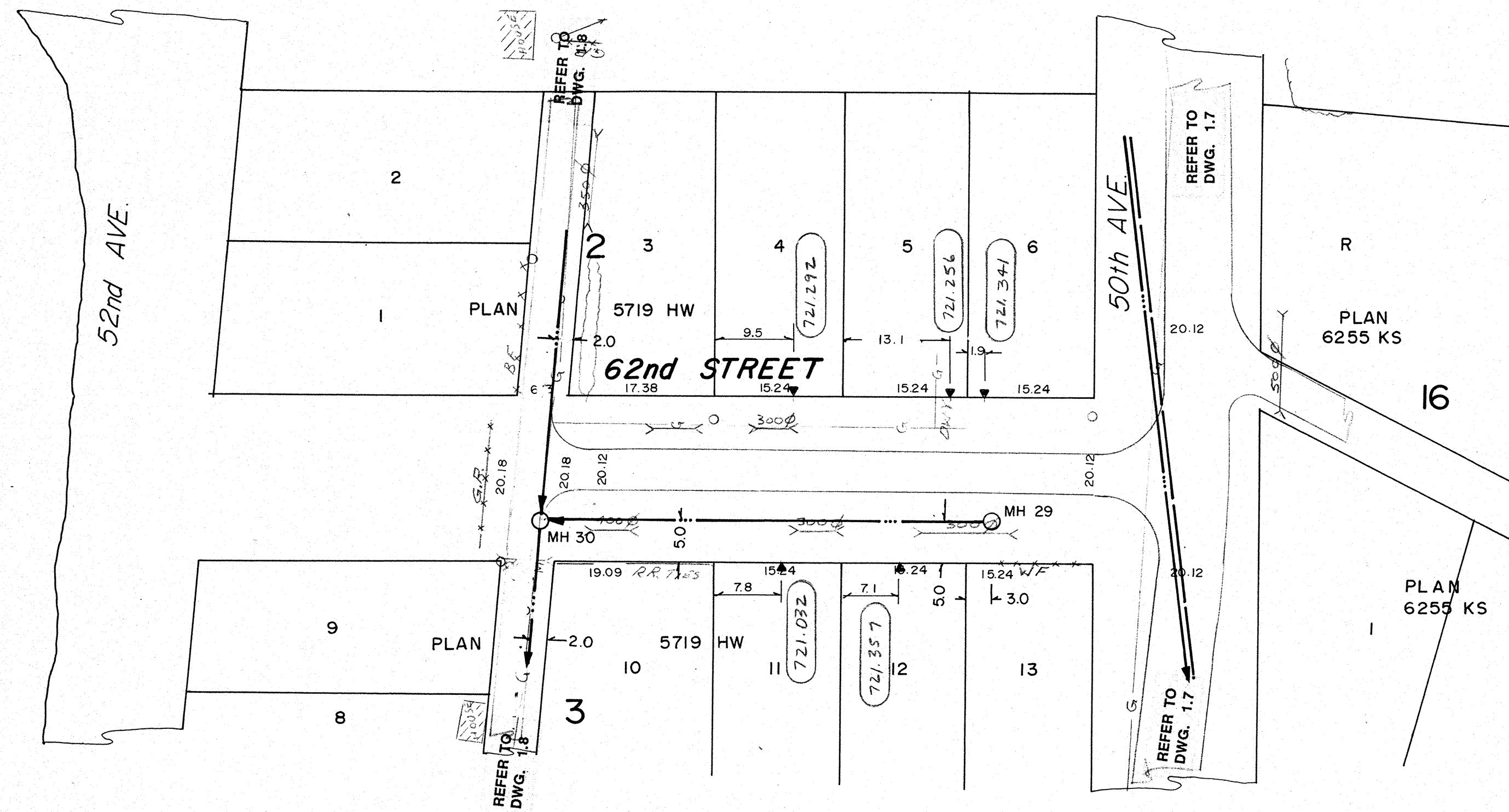




Lac Ste. Anne



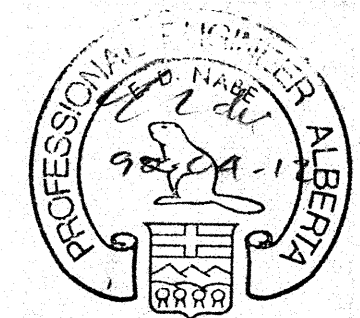
NOTES:

1. LOCATION OF EXISTING UTILITIES ARE APPROXIMATE ONLY (A.G.T., GAS, ETC.)
2. UTILITIES MAY EXIST WHICH ARE NOT SHOWN ON THIS DRAWING.
3. CONTRACTOR IS RESPONSIBLE FOR GETTING UTILITY COMPANIES TO MARK OUT ALL THEIR LINES (MAINS AND SERVICES).
4. CONTRACTOR IS RESPONSIBLE FOR ANY DAMAGE TO EXISTING UTILITIES WHETHER SHOWN ON THIS DRAWING OR NOT.

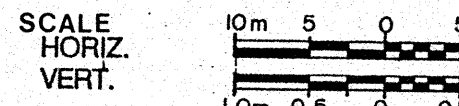
**SIEMENS**  
SIEMENS ENGINEERING SERVICES LTD.  
**AS-BUILT**  
DATE: 91-04-08  
REVIEWED BY: *[Signature]*

LEGEND	
	GRAVITY SEWER, MANHOLE, INVERT, AND DIRECTION OF FLOW
	FOREMAN (100 DIA.)
	EXISTING GROUND PROFILE AT CONSTRUCTION SITE
	EXISTING PROPERTY LINE PROFILE, AT RIGHT
	EXISTING PROPERTY LINE PROFILE, AT LEFT
	EXISTING DITCH AT RIGHT OF ROAD
	EXISTING DITCH AT LEFT OF ROAD
	FOUND LEGAL MARKER
	POWER POLE W/ GUY
	GUY POLE, SERVICE OR LIGHT STANDARD POLE
	HAND PUMP
	TEST HOLE OR BORE HOLE
	AGT PEDESTAL
	CSP CULVERT WIDTH
	CONC. CULVERT WIDTH
	FENCE (W/F WIRE, C/F CHAIN LINK, B/F BOARD, R-F RAIL, GR-GUARDRAIL, SF-SNOW)
	GAS REGULATOR STATION
	CATCH BASIN
	POWER LINE
	GAS LINE
	TELEPHONE LINE
	SERVICE CONNECTION

**PERMIT TO PRACTICE**  
SIEMENS ENGINEERING SERVICES LTD.  
Signature: *[Signature]*  
Date: 91-04-08  
**PERMIT NUMBER: P 2998**  
The Association of Professional Engineers, Geologists and Geophysicists of Alberta



No.	DATE	DESCRIPTION	BY	APP
1	11/90	AS BUILT	DF	PM



PROJECT No. 60-89-1

DESIGNED BY EDN

DRAWN BY DFF / TG

CHECKED BY *[Signature]*

DATE MAR., 1990

**SIEMENS**  
SIEMENS ENGINEERING SERVICES LTD.  
CIVIL & MUNICIPAL ENGINEERS  
DEVELOPMENT CONSULTANTS • PLANNERS

TRI-VILLAGE REGIONAL SEWAGE COMMISSION  
SUMMER VILLAGE OF VAL QUENTIN  
SEWAGE COLLECTION SYSTEM  
62nd STREET  
SHEET \_\_\_\_\_ OF \_\_\_\_\_ DWG. No. 1.17