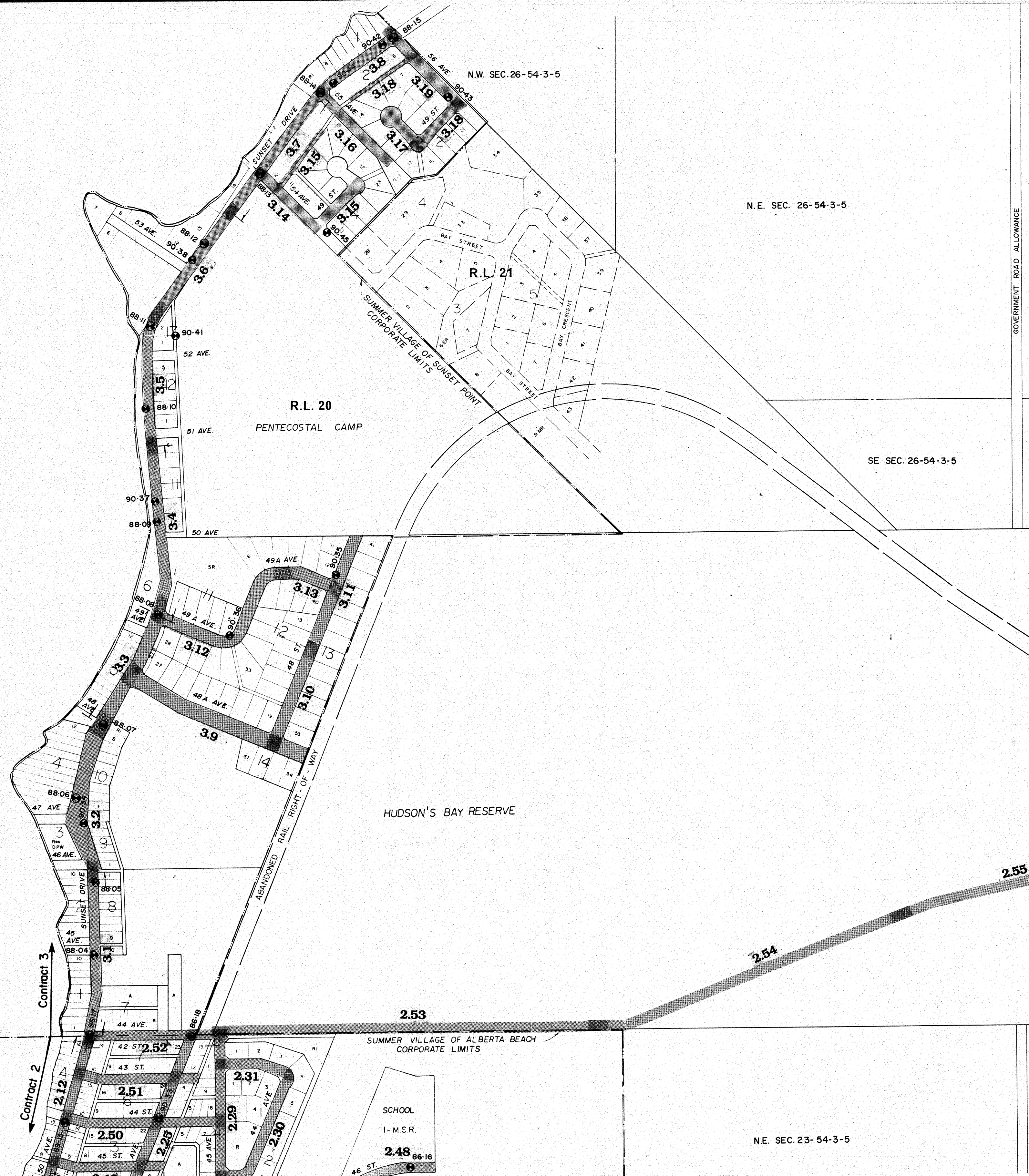


LAC STE. ANNE



N.E. SEC. 26-54-3-5

SE SEC. 26-54-3-5

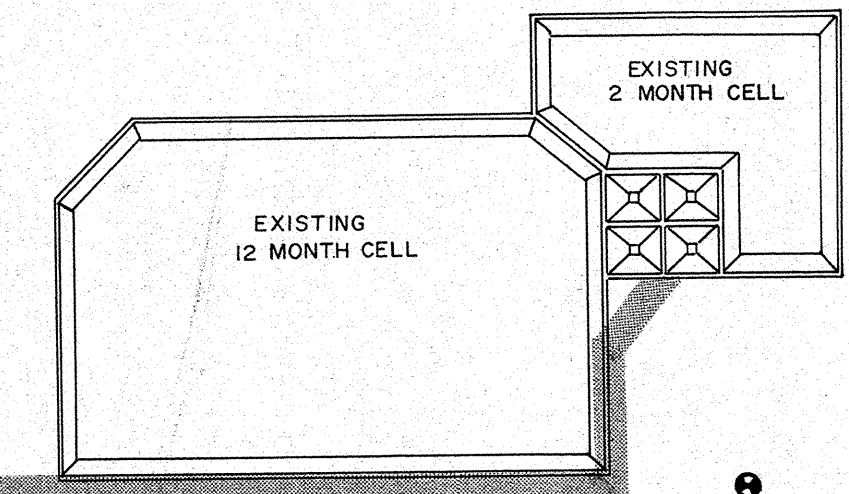
HUDSON'S BAY RESERVE

SUMMER VILLAGE OF ALBERTA BEACH CORPORATE LIMITS

N.E. SEC. 23-54-3-5

N.W. SEC. 24-54-3-5

N.E. SEC. 24-54-3-5

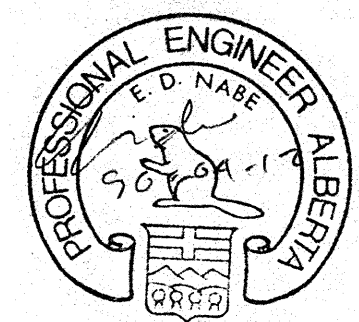


SIEMENS
SIEMENS ENGINEERING SERVICES LTD.
AS-BUILT
DATE: 91-04-08
REVIEWED BY: [Signature]

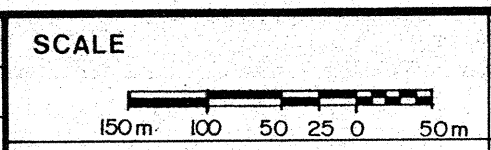
LEGEND

2.10 PLAN AREA AND DRAWING NO.
90-33 TESTHOLE AND NUMBER

PERMIT TO PRACTICE
SIEMENS ENGINEERING SERVICES LTD.
Signature: [Signature]
Date: 91-04-12
PERMIT NUMBER: P 2998
The Association of Professional Engineers,
Geologists and Geophysicists of Alberta



No.	DATE	DESCRIPTION	BY	APP
1	11/90	AS BUILT	DF	FM
REVISIONS				



DESIGNED BY EDN
CHECKED BY [Signature]

PROJECT No. 60-89-1
DRAWN BY DFF
DATE MAR., 1990

SIEMENS
SIEMENS ENGINEERING SERVICES LTD.
CIVIL & MUNICIPAL ENGINEERS
DEVELOPMENT CONSULTANTS • PLANNERS

TRI-VILLAGE REGIONAL SEWAGE COMMISSION
SUMMER VILLAGE OF SUNSET POINT
SEWAGE COLLECTION SYSTEM
DRAWING INDEX PLAN
TEST HOLE LOCATIONS
SHEET OF DWG. No. 05