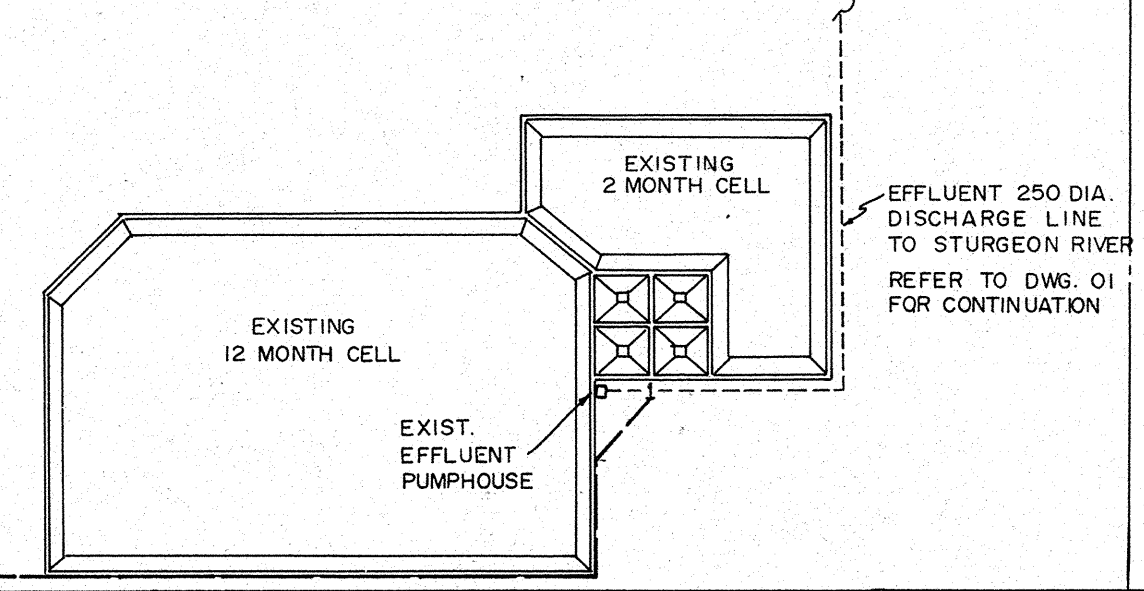
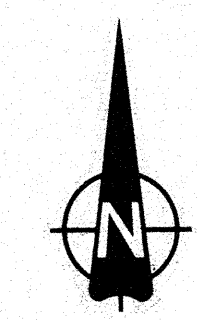
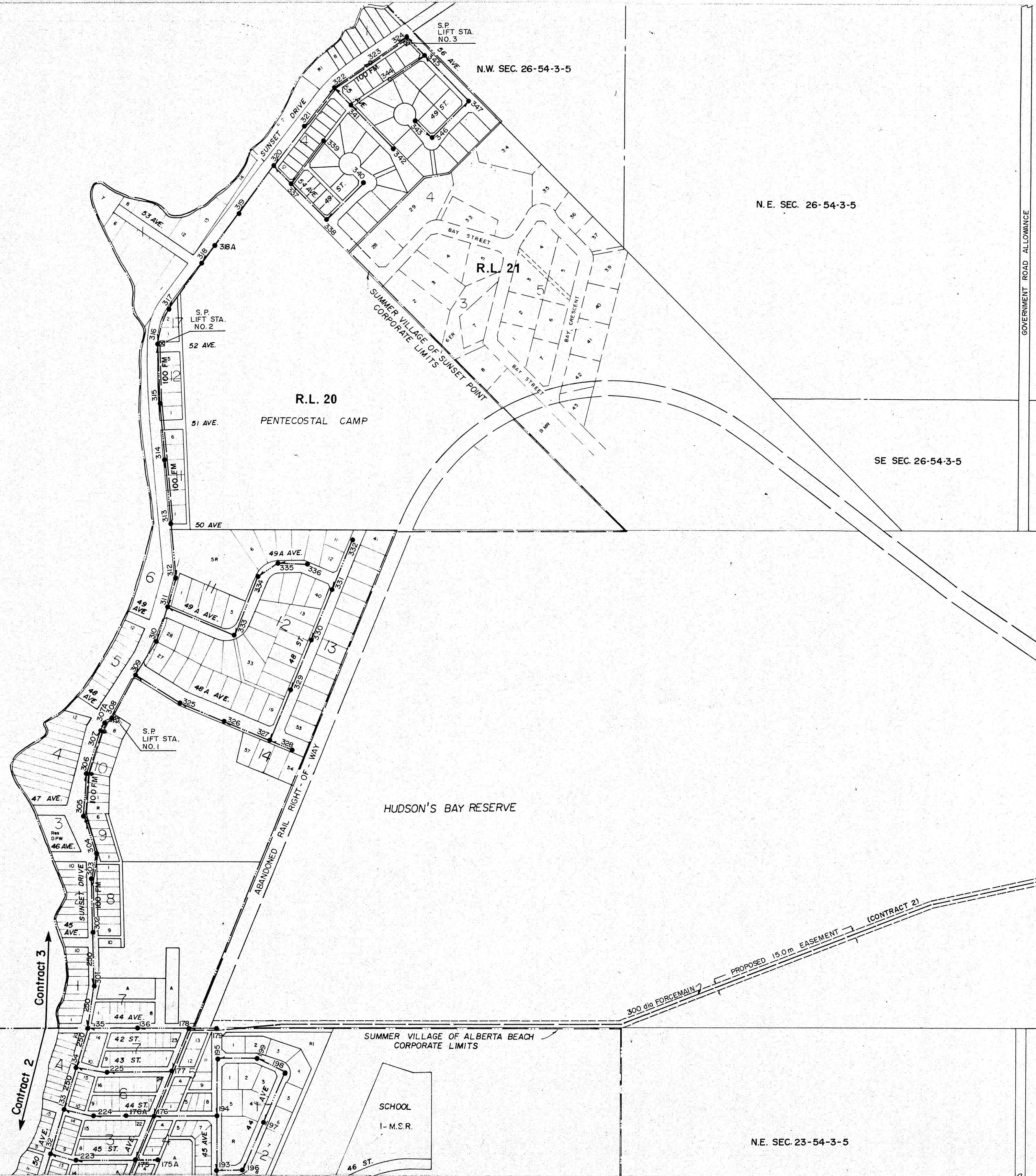


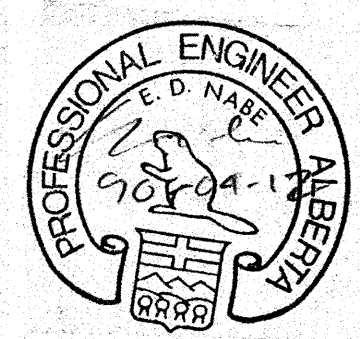
LAC STE. ANNE



**SIEMENS**  
SIEMENS ENGINEERING SERVICES LTD.  
**AS-BUILT**  
DATE: 9-04-08  
REVIEWED BY: [Signature]

**LEGEND**  
 GRAVITY SEWER, MANHOLE WITH NUMBER, AND DIRECTION OF FLOW  
 SEWAGE FORCEMAIN  
 GRAVITY SEWER IS 200 DIA. UNLESS SHOWN OTHERWISE

**PERMIT TO PRACTICE**  
SIEMENS ENGINEERING SERVICES LTD.  
Signature: [Signature]  
Date: 9-04-17  
**PERMIT NUMBER: P 2998**  
The Association of Professional Engineers,  
Geologists and Geophysicists of Alberta



No.	DATE	DESCRIPTION	BY	APP
2	11/90	AS BUILT	DF	PM
1	1990 05 23	ADDITIONAL MANHOLES	DF	EN
REVISIONS				

**SCALE**  
  
 DESIGNED BY EDN  
 CHECKED BY [Signature]

PROJECT No. 60-89-1  
 DRAWN BY DFF  
 DATE MAR., 1990

**SIEMENS**  
SIEMENS ENGINEERING SERVICES LTD.  
CIVIL & MUNICIPAL ENGINEERS  
DEVELOPMENT CONSULTANTS • PLANNERS

TRI-VILLAGE REGIONAL SEWAGE COMMISSION  
 SUMMER VILLAGE OF SUNSET POINT  
 SEWAGE COLLECTION SYSTEM  
 OVERALL PLAN  
 SHEET OF DWG. No. 03